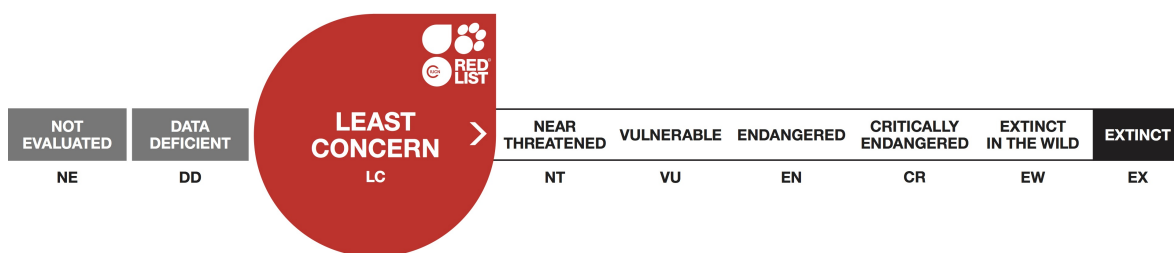


Podarcis erhardii, Erhard's Wall Lizard

Assessment by: Petros Lymberakis, Jelka Crnobrnja Isailovic, Rastko Ajtic, Milan Vogrin, Wolfgang Böhme



View on www.iucnredlist.org

Citation: Petros Lymberakis, Jelka Crnobrnja Isailovic, Rastko Ajtic, Milan Vogrin, Wolfgang Böhme. 2009. *Podarcis erhardii*. The IUCN Red List of Threatened Species 2009: e.T61546A12512784. <http://dx.doi.org/10.2305/IUCN.UK.2009.RLTS.T61546A12512784.en>

Copyright: © 2015 International Union for Conservation of Nature and Natural Resources

Reproduction of this publication for educational or other non-commercial purposes is authorized without prior written permission from the copyright holder provided the source is fully acknowledged.

Reproduction of this publication for resale, reposting or other commercial purposes is prohibited without prior written permission from the copyright holder. For further details see [Terms of Use](#).

The IUCN Red List of Threatened Species™ is produced and managed by the [IUCN Global Species Programme](#), the [IUCN Species Survival Commission \(SSC\)](#) and [The IUCN Red List Partnership](#). The IUCN Red List Partners are: [BirdLife International](#); [Botanic Gardens Conservation International](#); [Conservation International](#); [Microsoft](#); [NatureServe](#); [Royal Botanic Gardens, Kew](#); [Sapienza University of Rome](#); [Texas A&M University](#); [Wildscreen](#); and [Zoological Society of London](#).

If you see any errors or have any questions or suggestions on what is shown in this document, please provide us with [feedback](#) so that we can correct or extend the information provided.

Taxonomy

Kingdom	Phylum	Class	Order	Family
Animalia	Chordata	Reptilia	Squamata	Lacertidae

Taxon Name: *Podarcis erhardii* (Bedriaga, 1882)

Common Name(s):

- English: Erhard's Wall Lizard

Assessment Information

Red List Category & Criteria: Least Concern [ver 3.1](#)

Year Published: 2009

Date Assessed: December 14, 2008

Justification:

Listed as Least Concern in view of its wide distribution, presumed large population, and because it is unlikely to be declining fast enough to qualify for listing in a more threatened category.

Previously Published Red List Assessments

2006 – Least Concern (LC)

Geographic Range

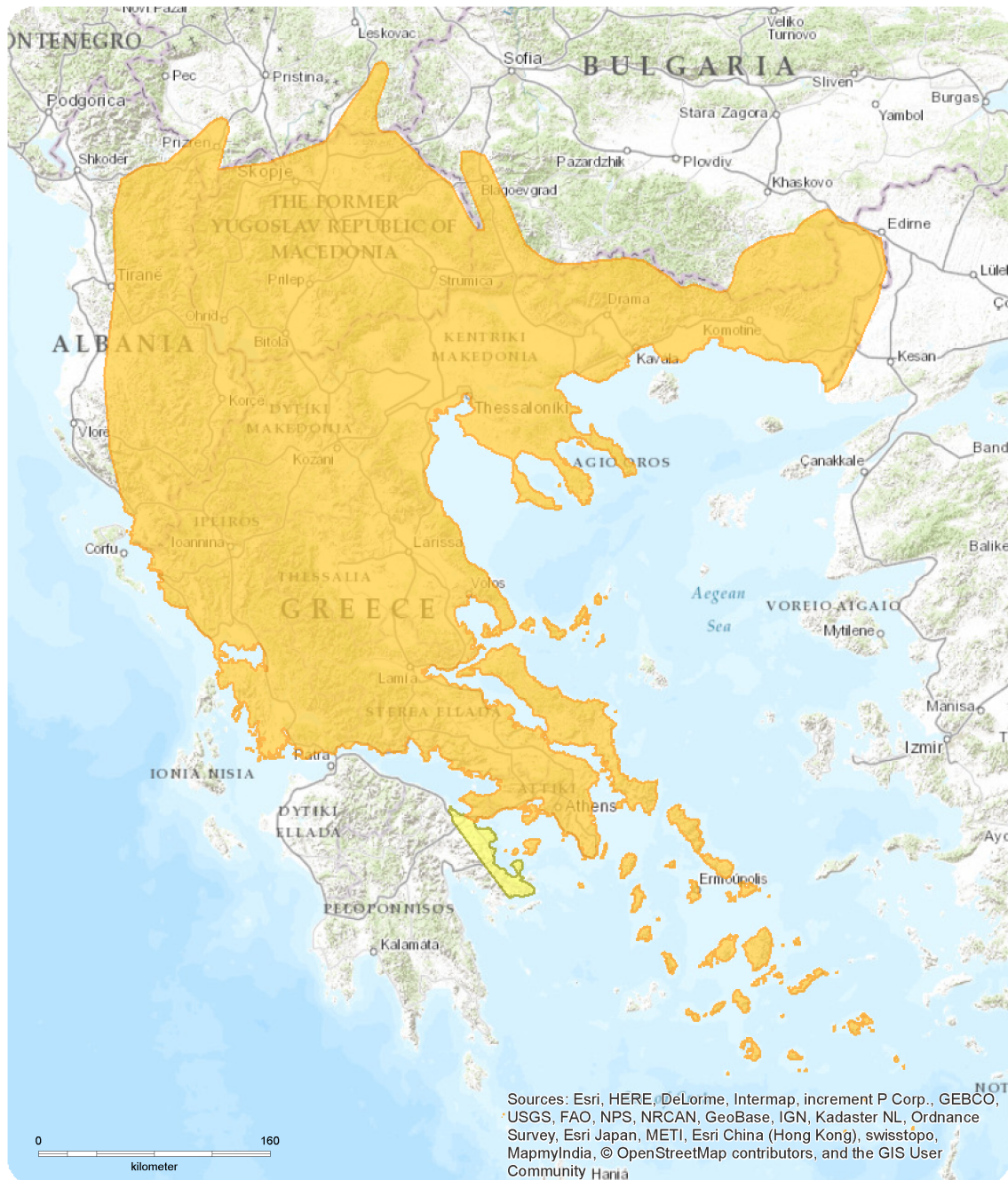
Range Description:

This species is endemic to the Balkans, and ranges from southern Bulgaria, extreme southern Serbia, Macedonia, Albania, and much of mainland Greece (excluding most of the Peloponnese). It is also present on many of the Aegean Islands (including the Cyclades, Sporades and Astypalaia in the Dodecanese). It occurs from sea level up to 2,000m asl. In many places it is known from isolated localities, rather than a continuous range.

Country Occurrence:

Native: Albania; Bulgaria; Greece; Macedonia, the former Yugoslav Republic of; Serbia (Serbia)

Distribution Map



Podarcis erhardii

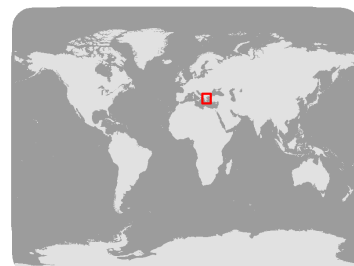
Range

- Extant (resident)
- Probably Extant (resident)

Compiled by:
IUCN (International Union for Conservation of Nature)

NE
DD

LC
LEAST CONCERN
NT
VU
EN
CR
EW
EX



The boundaries and names shown and the designations used on this map do not imply any official endorsement, acceptance or opinion by IUCN.



Population

It can be common in suitable habitat.

Current Population Trend: Stable

Habitat and Ecology (see Appendix for additional information)

It is found in rocky areas of Mediterranean type scrubland. Island populations can occur in more open areas such as sand dune systems. The females lay one to five eggs in a clutch.

Systems: Terrestrial

Threats (see Appendix for additional information)

There have been some localized declines of populations caused by habitat loss for tourism developments, but there are no threats to the species overall at present.

Conservation Actions (see Appendix for additional information)

This species is listed on Annex II of the Bern Convention and is protected by national legislation over a number of its range countries, but this legislation requires better enforcement. Its range includes several protected areas.

Credits

Assessor(s): Petros Lymberakis, Jelka Crnobrnja Isailovic, Rastko Ajtic, Milan Vogrin, Wolfgang Böhme

Reviewer(s): Cox, N. and Temple, H.J. (Global Reptile Assessment)

Bibliography

Arnold, E.N. 2003. *Reptiles and amphibians of Europe*. Princeton University Press., Princeton and Oxford.

Chondropoulos, B.P. and Chiras, G. 1997. Geographic Distribution. *Podarcis erhardii livadiaca*. *Herpetological Review*: 97.

Crnobrnja-Isailovic, J. and Aleksic, I. 1999. First record of *Coluber najadum* in Serbia. *Arch. Biol.Sci, Belgrade*: 41-42.

Crochet, P.-A. and Dubois, A. 2004. Recent changes in the taxonomy of European amphibians and reptiles. In: Gasc, J.-P., Cabela, A., Crnobrnja-Isailovic, J., Dolmen, D., Grossenbacher, K., Haffner, P., Lescure, J., Martens, H., Martínez Rica, J.P., Maurin, H., Oliveira, M.E., Sofianidou, T.S., Veith, M., Zuiderwijk, A. (ed.), *Atlas of Amphibians and Reptiles in Europe. Re-edition.*, Muséum national d'Histoire naturelle, Paris.

Gasc, J.-P., Cabela, A., Crnobrnja-Isailovic, J., Dolmen, D., Grossenbacher, K., Haffner, P., Lescure, J., Martens, H., Martínez-Rica, J.P., Maurin, H., Oliveira, M.E., Sofianidou, T.S., Veith, M. and Zuiderwijk, A. 1997. *Atlas of Amphibians and Reptiles in Europe*. Societas Europaea Herpetologica and Musée National d'Histoire Naturelle, Paris.

Gruber, U. and Schultze-Westrum, T. 1971. Zur Taxonomie und Ökologie der Cycladen-Eidechse (*Lacerta erhardii*) von den nördlichen Sporaden. *Bonn. Zool. Beitr.*: 101-130.

IUCN. 2009. European Species on the IUCN Red List. Available at: <http://www.iucnredlist.org/europe>. (Accessed: 22 June 2009).

Nöllert, A., Nöllert, C. and Ritter, A. 1986. Einige Beobachtungen zur Herpetofauna der bulgarischen Schwarzmeerküste und Südwestbulgariens (Teil 2 - Die Reptilien). *Herpetofauna* 8(44): 30-34.

Poulakakis, N., Lymberakis, P., Antoniou, A., Chalkia, D., Zouros, E., Mylonas, M. and Valakos, E. 2003. Molecular phylogeny and biogeography of the wall-lizard *Podarcis erhardii* (Squamata: Lacertidae). *Molecular Phylogenetics and Evolution*: 38-46.

Romero, M., Lutzmann, N. and Hartmann, M. 1998. Zur Kenntnis von *Podarcis erhardii rechingeri* (Wettstein, 1952). *Die Eidechse*: 45-49.

Sindaco, R. and Jeremčenko, V.K. 2008. *The Reptiles of the Western Palearctic. 1. Annotated Checklist and Distributional atlas of the turtles, crocodiles, amphisbaenians and lizards of Europe, North Africa, Middle East and Central Asia*. Edizioni Belvedere, Latina (Italy).

Tóth, T. 2001. Herpetologische Beobachtungen auf der Insel Syphnos (Kykladen, Griechenland). *Elaphe*: 70-73.

Citation

Petros Lymberakis, Jelka Crnobrnja Isailovic, Rastko Ajtic, Milan Vogrin, Wolfgang Böhme. 2009. *Podarcis erhardii*. *The IUCN Red List of Threatened Species 2009*: e.T61546A12512784. <http://dx.doi.org/10.2305/IUCN.UK.2009.RLTS.T61546A12512784.en>

Disclaimer

To make use of this information, please check the [Terms of Use](#).

External Resources

For [Images and External Links to Additional Information](#), please see the Red List website.

Appendix

Habitats

(<http://www.iucnredlist.org/technical-documents/classification-schemes>)

Habitat	Season	Suitability	Major Importance?
3. Shrubland -> 3.8. Shrubland - Mediterranean-type Shrubby Vegetation	-	Suitable	-
0. Root -> 6. Rocky areas (eg. inland cliffs, mountain peaks)	-	Marginal	-
14. Artificial/Terrestrial -> 14.4. Artificial/Terrestrial - Rural Gardens	-	Suitable	-
14. Artificial/Terrestrial -> 14.5. Artificial/Terrestrial - Urban Areas	-	Suitable	-

Threats

(<http://www.iucnredlist.org/technical-documents/classification-schemes>)

Threat	Timing	Scope	Severity	Impact Score
1. Residential & commercial development -> 1.3. Tourism & recreation areas	Ongoing	-	-	-
	Stresses:	1. Ecosystem stresses -> 1.1. Ecosystem conversion 1. Ecosystem stresses -> 1.2. Ecosystem degradation		

Conservation Actions in Place

(<http://www.iucnredlist.org/technical-documents/classification-schemes>)

Conservation Actions in Place
In-Place Land/Water Protection and Management
Conservation sites identified: Yes, over entire range
Occur in at least one PA: Yes

Conservation Actions Needed

(<http://www.iucnredlist.org/technical-documents/classification-schemes>)

Conservation Actions Needed
2. Land/water management -> 2.1. Site/area management
5. Law & policy -> 5.4. Compliance and enforcement -> 5.4.2. National level
5. Law & policy -> 5.4. Compliance and enforcement -> 5.4.4. Scale unspecified

Research Needed

(<http://www.iucnredlist.org/technical-documents/classification-schemes>)

Research Needed
0. Root -> 100.2. OLD 3-Research actions
1. Research -> 1.1. Taxonomy

Additional Data Fields

Distribution
Lower elevation limit (m): 0
Upper elevation limit (m): 2000
Population
Population severely fragmented: No

The IUCN Red List Partnership



The IUCN Red List of Threatened Species™ is produced and managed by the [IUCN Global Species Programme](#), the [IUCN Species Survival Commission \(SSC\)](#) and [The IUCN Red List Partnership](#). The IUCN Red List Partners are: [BirdLife International](#); [Botanic Gardens Conservation International](#); [Conservation International](#); [Microsoft](#); [NatureServe](#); [Royal Botanic Gardens, Kew](#); [Sapienza University of Rome](#); [Texas A&M University](#); [Wildscreen](#); and [Zoological Society of London](#).