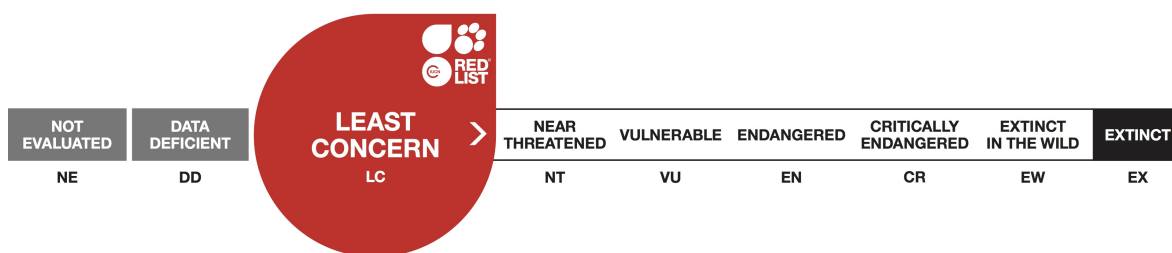


Eremias suphani, Suphan Racerunner

Assessment by: Yakup Kaska, Yusuf Kumlutaş, Uğur Kaya, Aziz Avcı, Nazan Üzüm, Can Yeniurt, Ferdi Akarsu



View on www.iucnredlist.org

Citation: Yakup Kaska, Yusuf Kumlutaş, Uğur Kaya, Aziz Avcı, Nazan Üzüm, Can Yeniurt, Ferdi Akarsu. 2009. *Eremias suphani*. *The IUCN Red List of Threatened Species 2009*: e.T164689A5917915. <http://dx.doi.org/10.2305/IUCN.UK.2009.RLTS.T164689A5917915.en>

Copyright: © 2015 International Union for Conservation of Nature and Natural Resources

Reproduction of this publication for educational or other non-commercial purposes is authorized without prior written permission from the copyright holder provided the source is fully acknowledged.

Reproduction of this publication for resale, reposting or other commercial purposes is prohibited without prior written permission from the copyright holder. For further details see [Terms of Use](#).

The IUCN Red List of Threatened Species™ is produced and managed by the [IUCN Global Species Programme](#), the [IUCN Species Survival Commission \(SSC\)](#) and [The IUCN Red List Partnership](#). The IUCN Red List Partners are: [BirdLife International](#); [Botanic Gardens Conservation International](#); [Conservation International](#); [Microsoft](#); [NatureServe](#); [Royal Botanic Gardens, Kew](#); [Sapienza University of Rome](#); [Texas A&M University](#); [Wildscreen](#); and [Zoological Society of London](#).

If you see any errors or have any questions or suggestions on what is shown in this document, please provide us with [feedback](#) so that we can correct or extend the information provided.

Taxonomy

Kingdom	Phylum	Class	Order	Family
Animalia	Chordata	Reptilia	Squamata	Lacertidae

Taxon Name: *Eremias suphani* Basoglu & Hellmich, 1968

Common Name(s):

- English: Suphan Racerunner

Assessment Information

Red List Category & Criteria: Least Concern [ver 3.1](#)

Year Published: 2009

Date Assessed: December 14, 2008

Justification:

Listed as Least Concern since, although its Extent of Occurrence is less than 20,000 km², it is common with a large population, no major threats, and it is unlikely to be declining fast enough to qualify for listing in a more threatened category.

Geographic Range

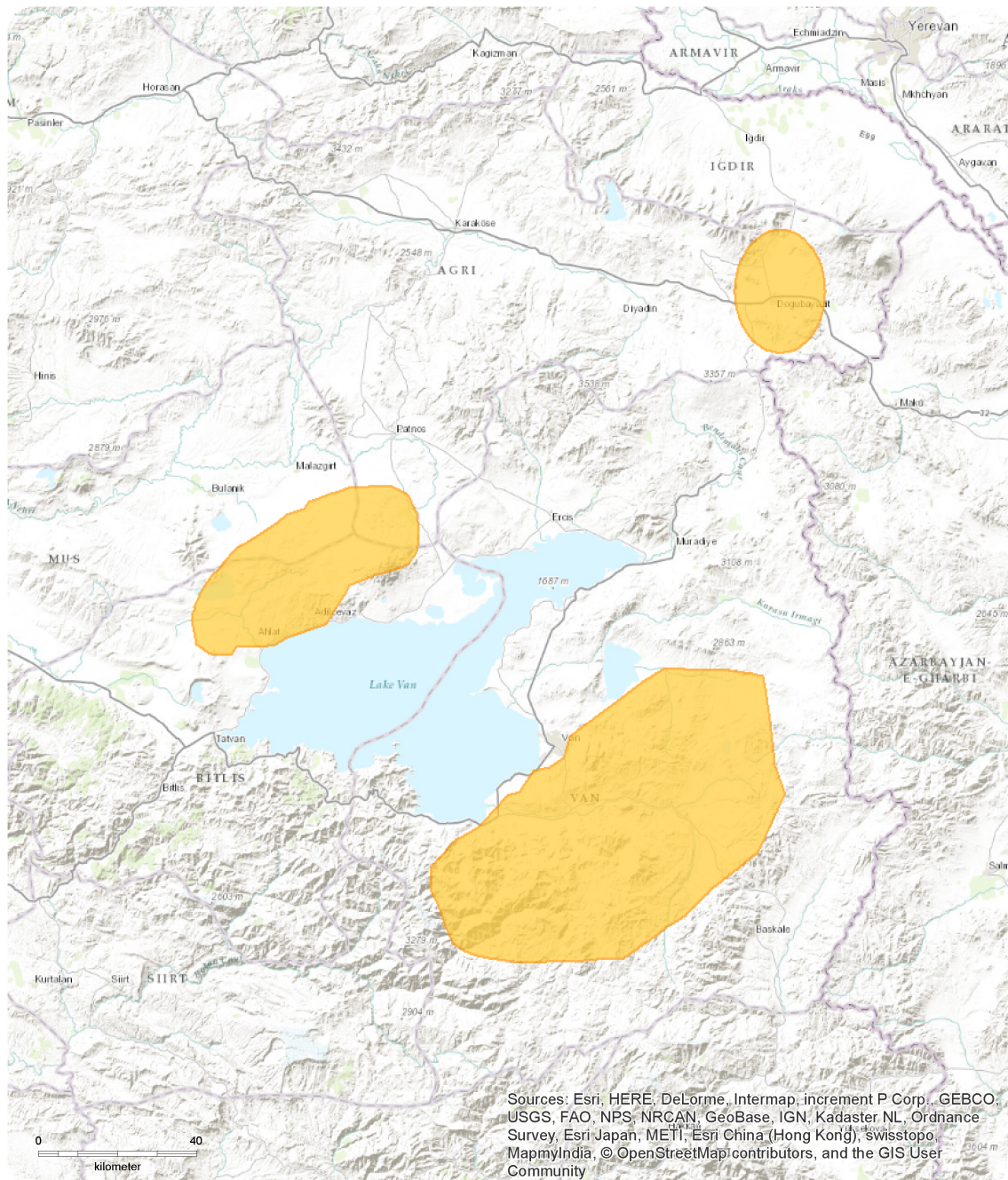
Range Description:

This species is endemic to eastern Turkey, where it is known from the vicinity of Lake Van, within the boundaries of Vilayets Van, Bitlis, and Agri (Baran and Atatür, 1998 and Franzen and Heckers, 1999). It has been recorded up to 2,400m asl.

Country Occurrence:

Native: Turkey

Distribution Map



Eremias suphani

Range
■ Extant (resident)

Compiled by:
 IUCN (International Union for Conservation of Nature)

NE DD LC > NT VU EN CR EW EX
LEAST CONCERN



The boundaries and names shown and the designations used on this map do not imply any official endorsement, acceptance or opinion by IUCN.



Population

This species is common.

Current Population Trend: Stable

Habitat and Ecology (see Appendix for additional information)

It is found in desert-like, dry open places with pebbly substrates and little vegetation (Baran and Atatür, 1998). It hides in cracks and crevices and can also burrow. The female lays between three and seven eggs.

Systems: Terrestrial

Threats

There are no major threats to this species.

Conservation Actions (see Appendix for additional information)

This species is found in Bitlis-Adilcevaz Süphandağı Wildlife Management Zone. Other than general research, no direct conservation measures are currently needed for this species.

Credits

Assessor(s): Yakup Kaska, Yusuf Kumlutaş, Uğur Kaya, Aziz Avcı, Nazan Üzüm, Can Yeniyurt, Ferdi Akarsu

Reviewer(s): Neil Cox and Helen Temple

Bibliography

Basoglu, M. and Hellmich, H.W. 1968. Eine neue Eremias-Form aus Ost-Anatolien (Reptilia, Lacertidae). *Ege Üniv. Fen. Fak. Ilmi Rap. Ser. (Izmir)*: 1-9.

Bischoff, W. and Böhme, W. 1980. Der systematische Status der türkischen Wüstenrenner des Subgenus Eremias (Sauria: Lacertidae). *Zool. Beitr., N.F., (Berlin)*: 297-306.

Franzen, M. and Heckes, U. 1999. Eremias suphani Basoglu & Hellmich, 1968 und Eremias strauchi Kessler, 1878 in der östlichen Türkei: Diagnostische Merkmale, Verbreitung und Lebensräume (Sauria: Lacertidae). *Salamandra*: 255-266.

IUCN. 2009. IUCN Red List of Threatened Species (ver. 2009.1). Available at: www.iucnredlist.org. (Accessed: 22 June 2009).

Sindaco, R. and Jeremčenko, V.K. 2008. *The Reptiles of the Western Palearctic. 1. Annotated Checklist and Distributional atlas of the turtles, crocodiles, amphisbaenians and lizards of Europe, North Africa, Middle East and Central Asia*. Edizioni Belvedere, Latina (Italy).

Citation

Yakup Kaska, Yusuf Kumlutaş, Uğur Kaya, Aziz Avcı, Nazan Üzümlü, Can Yenyurt, Ferdi Akarsu. 2009. *Eremias suphani*. *The IUCN Red List of Threatened Species 2009*: e.T164689A5917915. <http://dx.doi.org/10.2305/IUCN.UK.2009.RLTS.T164689A5917915.en>

Disclaimer

To make use of this information, please check the [Terms of Use](#).

External Resources

For [Images and External Links to Additional Information](#), please see the Red List website.

Appendix

Habitats

(<http://www.iucnredlist.org/technical-documents/classification-schemes>)

Habitat	Season	Suitability	Major Importance?
8. Desert -> 8.1. Desert - Hot	-	Suitable	-

Conservation Actions in Place

(<http://www.iucnredlist.org/technical-documents/classification-schemes>)

Conservation Actions in Place
In-Place Land/Water Protection and Management
Conservation sites identified: Yes, over entire range

Research Needed

(<http://www.iucnredlist.org/technical-documents/classification-schemes>)

Research Needed
1. Research -> 1.2. Population size, distribution & trends
1. Research -> 1.3. Life history & ecology

Additional Data Fields

Distribution
Upper elevation limit (m): 2400
Population
Population severely fragmented: No

The IUCN Red List Partnership



The IUCN Red List of Threatened Species™ is produced and managed by the [IUCN Global Species Programme](#), the [IUCN Species Survival Commission \(SSC\)](#) and [The IUCN Red List Partnership](#). The IUCN Red List Partners are: [BirdLife International](#); [Botanic Gardens Conservation International](#); [Conservation International](#); [Microsoft](#); [NatureServe](#); [Royal Botanic Gardens, Kew](#); [Sapienza University of Rome](#); [Texas A&M University](#); [Wildscreen](#); and [Zoological Society of London](#).