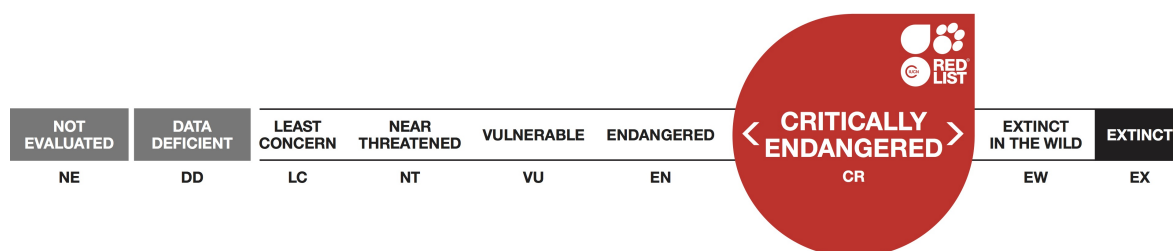


Eremias pleskei, Transcaucasian Racerunner

Assessment by: Boris Tuniyev, Natalia Ananjeva, Aram Agasyan, Nikolai Orlov,
 and Sako Tuniyev



View on www.iucnredlist.org

Citation: Boris Tuniyev, Natalia Ananjeva, Aram Agasyan, Nikolai Orlov, and Sako Tuniyev. 2009. *Eremias pleskei*. The IUCN Red List of Threatened Species 2009: e.T164583A5910262. <http://dx.doi.org/10.2305/IUCN.UK.2009.RLTS.T164583A5910262.en>

Copyright: © 2015 International Union for Conservation of Nature and Natural Resources

Reproduction of this publication for educational or other non-commercial purposes is authorized without prior written permission from the copyright holder provided the source is fully acknowledged.

Reproduction of this publication for resale, reposting or other commercial purposes is prohibited without prior written permission from the copyright holder. For further details see [Terms of Use](#).

The IUCN Red List of Threatened Species™ is produced and managed by the [IUCN Global Species Programme](#), the [IUCN Species Survival Commission \(SSC\)](#) and [The IUCN Red List Partnership](#). The IUCN Red List Partners are: [BirdLife International](#); [Botanic Gardens Conservation International](#); [Conservation International](#); [Microsoft](#); [NatureServe](#); [Royal Botanic Gardens, Kew](#); [Sapienza University of Rome](#); [Texas A&M University](#); [Wildscreen](#); and [Zoological Society of London](#).

If you see any errors or have any questions or suggestions on what is shown in this document, please provide us with [feedback](#) so that we can correct or extend the information provided.

Taxonomy

Kingdom	Phylum	Class	Order	Family
Animalia	Chordata	Reptilia	Squamata	Lacertidae

Taxon Name: *Eremias pleskei* Nikolsky, 1905

Synonym(s):

- *Eremias fasciata pleskei*
- *Eremias pleskei*
- *Eremias (Rhabderemias) pleskei*

Common Name(s):

- English: Pleske's Racerunner, Transcaucasian Racerunner

Assessment Information

Red List Category & Criteria: Critically Endangered A2c [ver 3.1](#)

Year Published: 2009

Date Assessed: December 14, 2008

Justification:

Listed as Critically Endangered because of a drastic population decline, estimated to be more than 80% over the last 10 years due to the loss of its narrowly distributed habitat, observed shrinkage in distribution due to habitat loss (sandy enclaves) and anecdotal information on remaining populations.

Geographic Range

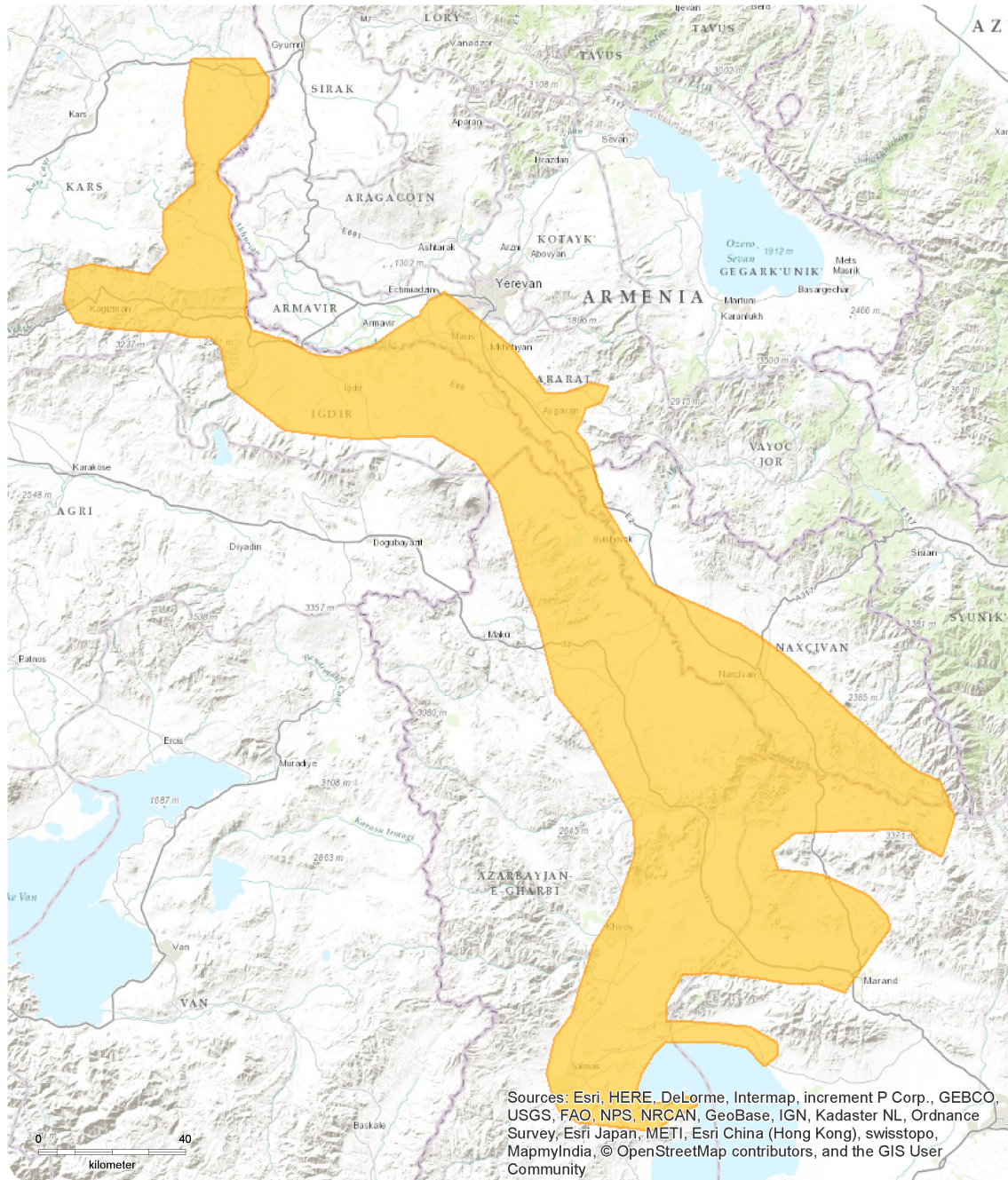
Range Description:

This species is restricted to the Armenian Plateau of Armenia, Azerbaijan (including the disputed territory of Nakhichevan), northwestern Iran and Turkey (vicinity of Igdir in eastern Anatolia) (Baran and Atatür, 1998; Anderson, 1999). The distribution is highly restricted to areas of suitable sandy semi-desert habitat over a very wide area, and therefore occupies a small fraction of its estimated extent of occurrence. In Turkey it occurs between 500 and 1,700m asl.

Country Occurrence:

Native: Armenia (Armenia); Azerbaijan; Iran, Islamic Republic of; Turkey

Distribution Map

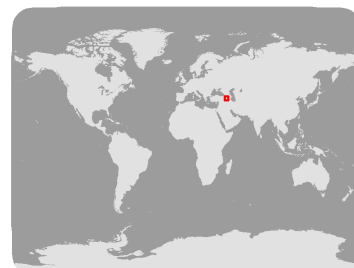


Eremias pleskei

Range
 Extant (resident)

Compiled by:
 IUCN (International Union for Conservation of Nature)

NE	DD	LC	NT	VU	EN	< CR > CRITICALLY ENDANGERED	EW	EX
----	----	----	----	----	----	--	----	----



The boundaries and names shown and the designations used on this map do not imply any official endorsement, acceptance or opinion by IUCN.



Population

It is found at low densities.

Current Population Trend: Decreasing

Habitat and Ecology (see Appendix for additional information)

This species is generally associated with sandy semi-desert enclaves. In Iran, it has been recorded from semi desert sandy or stony soils of Artemisia steppes (Anderson, 1999). In Turkey, it is found in semi-desert sandy and partly rocky areas (Baran and Atatur, 1998). Animals generally hide under stones when disturbed. The female lays between two and four eggs, laying two clutches each season.

Systems: Terrestrial

Threats (see Appendix for additional information)

This species has almost no remaining suitable habitat remaining within its range (sandy areas) due to human disturbance of its restricted distribution. Threats include salinification and the placement of trash dumps on suitable habitat.

Conservation Actions (see Appendix for additional information)

This species does not occur in any protected areas. Urgent actions are needed to conserve any remaining areas of habitat for this species.

Credits

Assessor(s): Boris Tuniyev, Natalia Ananjeva, Aram Agasyan, Nikolai Orlov, and Sako Tuniyev

Reviewer(s): Neil Cox and Helen Temple

Bibliography

- Alekperov A. M. 1978. *Zemnovodnye i presmykajuschiesya Azerbajjana*. Alm, Baku.
- Ananjeva, N. B., Borkin, L. Y., Darevsky, I. S., Orlov, N. L. 1998. *Amphibii i presmykajushchiesya*. AFB, Moscow.
- Ananjeva, N. B., Orlov, N. L., Khalikov, R. G., Darevsky, I. S., Ryabov, S. A., Barabanov, A. V. 2004. *Atlas presmykajushchikhsya Severnoi Eurazii*. Zoologichesky Institute RAN, Sanct-Petrburg.
- Anderson, S.C. 1999. *The Lizards of Iran*. Society for the Study of Amphibians and Reptiles, Saint Louis, Missouri.
- Bischoff, W. 1978. Beiträge zur Kenntnis der Echsen des Kaukasus. *Salamandra*: 178-202.
- Clark, R.J., Clark, E.D. and Anderson, S.C. 1966. Report on two small collections of reptiles from Iran. *Occasional Papers of the California Academy of Science* 55: 1-9.
- Darevsky, I. S. 1957. Fauna amphiby i presmykajushchikhsya Armenii i ego zoogeografichesky analiz.
- Hillmann, B. 2003. Herpetologische Eindrücke aus dem Iran. *Elaphe* 11(4): 61-71.
- IUCN. 2009. IUCN Red List of Threatened Species (ver. 2009.1). Available at: www.iucnredlist.org. (Accessed: 22 June 2009).
- Sindaco, R. and Jeremčenko, V.K. 2008. *The Reptiles of the Western Palearctic. 1. Annotated Checklist and Distributional atlas of the turtles, crocodiles, amphisbaenians and lizards of Europe, North Africa, Middle East and Central Asia*. Edizioni Belvedere, Latina (Italy).
- Sindaco, R., Venchi, A., Carpaneto, G.M. and Bologna, M.A. 2000. The reptiles of Anatolia: a checklist and zoogeographical analysis. *Biogeographia* 21: 441-554.

Citation

Boris Tuniyev, Natalia Ananjeva, Aram Agasyan, Nikolai Orlov, and Sako Tuniyev. 2009. *Eremias pleskei*. *The IUCN Red List of Threatened Species 2009*: e.T164583A5910262.
<http://dx.doi.org/10.2305/IUCN.UK.2009.RLTS.T164583A5910262.en>

Disclaimer

To make use of this information, please check the [Terms of Use](#).

External Resources

For [Images and External Links to Additional Information](#), please see the Red List website.

Appendix

Habitats

(<http://www.iucnredlist.org/technical-documents/classification-schemes>)

Habitat	Season	Suitability	Major Importance?
8. Desert -> 8.1. Desert - Hot	-	Suitable	-

Threats

(<http://www.iucnredlist.org/technical-documents/classification-schemes>)

Threat	Timing	Scope	Severity	Impact Score
2. Agriculture & aquaculture -> 2.1. Annual & perennial non-timber crops -> 2.1.3. Agro-industry farming	Ongoing	-	-	-
	Stresses:	1. Ecosystem stresses -> 1.1. Ecosystem conversion 1. Ecosystem stresses -> 1.2. Ecosystem degradation		
9. Pollution -> 9.1. Domestic & urban waste water -> 9.1.3. Type Unknown/Unrecorded	Ongoing	-	-	-
	Stresses:	1. Ecosystem stresses -> 1.2. Ecosystem degradation		
9. Pollution -> 9.2. Industrial & military effluents -> 9.2.3. Type Unknown/Unrecorded	Ongoing	-	-	-
	Stresses:	1. Ecosystem stresses -> 1.2. Ecosystem degradation		
9. Pollution -> 9.4. Garbage & solid waste	Ongoing	-	-	-
	Stresses:	1. Ecosystem stresses -> 1.2. Ecosystem degradation		

Conservation Actions Needed

(<http://www.iucnredlist.org/technical-documents/classification-schemes>)

Conservation Actions Needed
1. Land/water protection -> 1.1. Site/area protection
2. Land/water management -> 2.1. Site/area management

Research Needed

(<http://www.iucnredlist.org/technical-documents/classification-schemes>)

Research Needed
1. Research -> 1.2. Population size, distribution & trends
1. Research -> 1.3. Life history & ecology
1. Research -> 1.5. Threats

Research Needed

3. Monitoring -> 3.1. Population trends

Additional Data Fields

Distribution

Lower elevation limit (m): 500

Upper elevation limit (m): 1700

Population

Population severely fragmented: Yes

The IUCN Red List Partnership



The IUCN Red List of Threatened Species™ is produced and managed by the [IUCN Global Species Programme](#), the [IUCN Species Survival Commission \(SSC\)](#) and [The IUCN Red List Partnership](#). The IUCN Red List Partners are: [BirdLife International](#); [Botanic Gardens Conservation International](#); [Conservation International](#); [Microsoft](#); [NatureServe](#); [Royal Botanic Gardens, Kew](#); [Sapienza University of Rome](#); [Texas A&M University](#); [Wildscreen](#); and [Zoological Society of London](#).