

## Contribution to the knowledge of distribution and diversity of lacertid lizards in Serbia

ALEKSANDAR UROŠEVIĆ<sup>1</sup>, KATARINA LJUBISAVLJEVIĆ<sup>2</sup>, LJILJANA TOMOVIĆ<sup>3</sup>, IMRE KRIZMANIĆ<sup>4</sup>, RASTKO AJTIĆ<sup>5</sup>, ALEKSANDAR SIMOVIĆ<sup>6</sup>, NENAD LABUS<sup>7</sup>, DANKO JOVIĆ<sup>8</sup>, ANA GOLUBOVIĆ<sup>9</sup>, MARKO ANĐELKOVIĆ<sup>10</sup> & GEORG DŽUKIĆ<sup>11</sup>

<sup>1</sup> University of Belgrade, Institute for Biological Research “Siniša Stanković”, Bulevar despota Stefana 142, 11000 Belgrade, Serbia. E-mail: [aurosevic@ibiss.bg.ac.rs](mailto:aurosevic@ibiss.bg.ac.rs), corresponding author.

<sup>2</sup> University of Belgrade, Institute for Biological Research “Siniša Stanković”, Bulevar despota Stefana 142, 11000 Belgrade, Serbia. E-mail: [katarina.ljubisavljevic@ibiss.bg.ac.rs](mailto:katarina.ljubisavljevic@ibiss.bg.ac.rs)

<sup>3</sup> University of Belgrade, Faculty of Biology, Studentski trg 16, 11000 Belgrade, Serbia. E-mail: [lili@bio.bg.ac.rs](mailto:lili@bio.bg.ac.rs)

<sup>4</sup> University of Belgrade, Faculty of Biology, Studentski trg 16, 11000 Belgrade, Serbia. E-mail: [krizmanic.imre@bio.bg.ac.rs](mailto:krizmanic.imre@bio.bg.ac.rs)

<sup>5</sup> Institute for Nature Conservation of Serbia, Dr Ivana Ribara 91, 11070 Belgrade, Serbia. E-mail: [rastko@mail.ru](mailto:rastko@mail.ru)

<sup>6</sup> Serbian Herpetological Society “Milutin Radovanović”, Bulevar despota Stefana 142, 11000 Belgrade, Serbia. E-mail: [alexandar.simovic@gmail.com](mailto:alexandar.simovic@gmail.com)

<sup>7</sup> University of Priština, Faculty of Science and Mathematics, Biology Department, Lole Ribara 29, 38220 Kosovska Mitrovica, Serbia. E-mail: [nenad.labus@gmail.com](mailto:nenad.labus@gmail.com)

<sup>8</sup> Institute for Nature Conservation of Serbia, Vožda Karadžorđa 14, 18000 Niš, Serbia. E-mail: [dankojovic@gmail.com](mailto:dankojovic@gmail.com)

<sup>9</sup> University of Belgrade, Faculty of Biology, Studentski trg 16, 11000 Belgrade, Serbia. E-mail: [golubovic.ana@bio.bg.ac.rs](mailto:golubovic.ana@bio.bg.ac.rs)

<sup>10</sup> University of Belgrade, Institute for Biological Research “Siniša Stanković”, Bulevar despota Stefana 142, 11000 Belgrade, Serbia. E-mail: [marko.andjelkovic@ibiss.bg.ac.rs](mailto:marko.andjelkovic@ibiss.bg.ac.rs)

<sup>11</sup> University of Belgrade, Institute for Biological Research “Siniša Stanković”, Bulevar despota Stefana 142, 11000 Belgrade, Serbia. E-mail: [georg.dzukic@gmail.com](mailto:georg.dzukic@gmail.com)

Received 5 April 2015 | Accepted 16 April 2015 | Published online 18 April 2015.

### Abstract

In this study, we present updated distributional data for all Serbian lacertids, having taken into account the available previously published information, and the so far unpublished authors' field records and evidence from other sources. According to our current knowledge, eight lacertid species inhabit Serbia. Analysis of lacertid diversity within the country showed that biogeographic regions with highest species diversity are Metohija (eight species) and Kosovo (seven species). Regions in Serbia are mutually similar concerning lacertid faunas (average Bray-Curtis dissimilarity index is 0.82). Comparative analysis of lacertid faunas among all Balkan countries showed that Serbian lacertid fauna is the most similar to those of Albania and the FYR of Macedonia, and then to faunas of Romania and Bulgaria. Zoogeographic analysis showed that Serbian lacertids belong to three distinct chorotypes, with the East-Mediterranean being the richest (four species). Generally, diversity of lacertids in Serbia is most strongly determined by topographic diversity, habitat heterogeneity, and climatic peculiarities, with the inflow of the sub-Mediterranean climate along several river valleys in the south being especially important. This paper is intended to serve as a basis for further research, since data on distribution of lacertid species in Serbia are far from complete, with large distributional gaps of recorded species and with unconfirmed presence of two species.

**Key words:** Lacertidae, distribution, diversity, zoogeography, Republic of Serbia.

## Introduction

Gathering data on species distribution in the given region is the primary prerequisite for subsequent studies of ecology, biogeography, evolution and systematics. It is also crucial for the assessing conservation priorities (Margules *et al.* 2002; Cogălniceanu *et al.* 2013; Jelić *et al.* 2013; Vukov *et al.* 2013; Sterijovski *et al.* 2014; Tomović *et al.* 2014). Detailed faunistic studies can help researchers identify biodiversity “hotspots” – areas with exceptional species concentrations, high levels of endemism and/or areas under significant threats (Myers 1988; Gaston *et al.* 2002). Also, studies of diversity at different taxonomic (hierarchical) levels can provide valuable insights into faunal taxonomic distinctness (Warwick & Clarke 1995; Clarke & Warwick 1999).

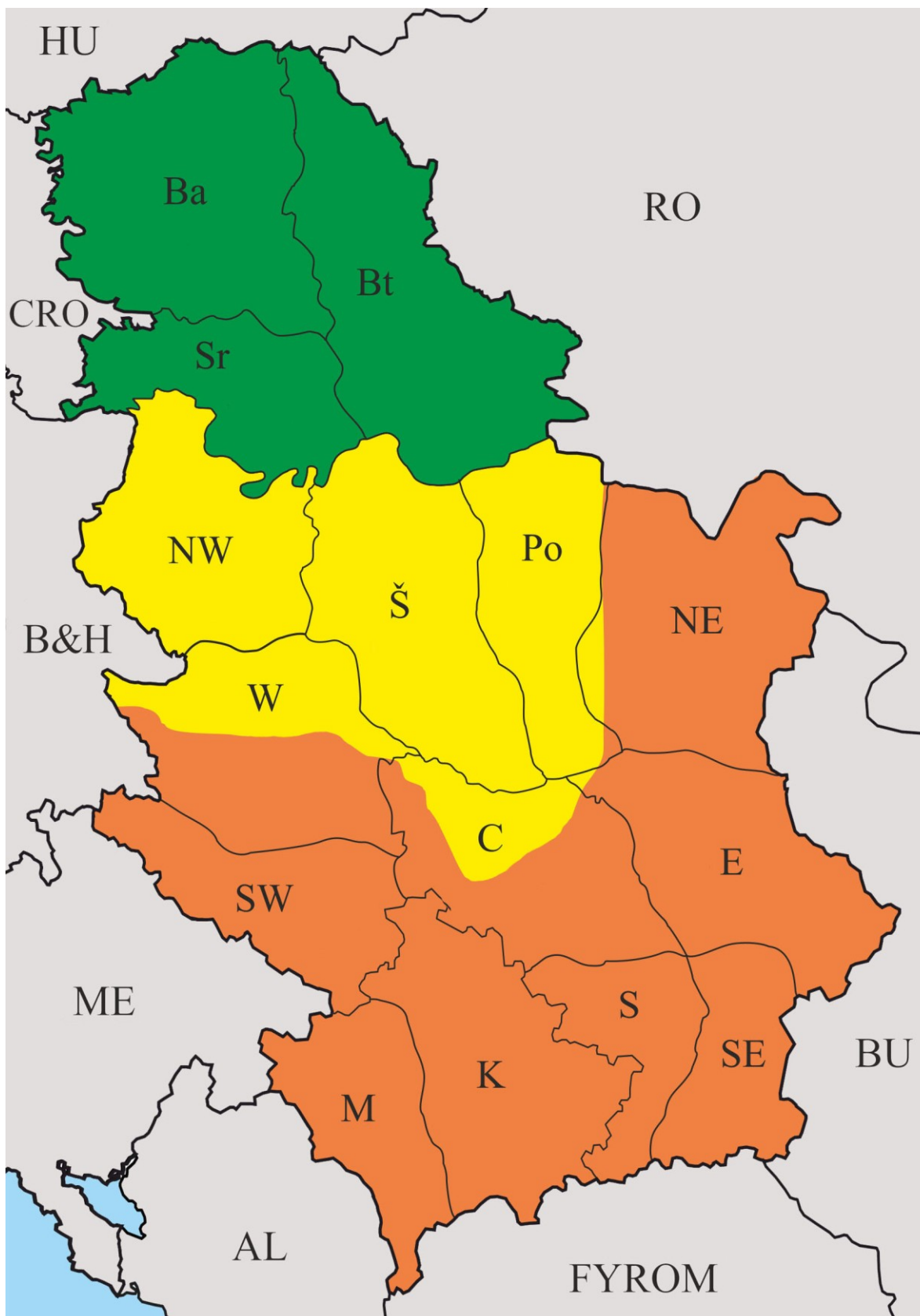
The Balkan Peninsula is one of the European biodiversity hotspots (Gaston & David 1994; Médail & Quézel 1999), especially considering herpetofauna (Džukić 1995; Džukić & Kalezić 2004). Serbia is situated in the central part of the Balkans and is important in terms of diversity of reptiles, including lacertid lizards (Džukić 1995; Džukić & Kalezić 2004). In the territory of Serbia, various biogeographic phenomena have been recorded: high morphological and genetic diversity within certain species (e.g. Džukić & Kalezić 2004; Ljubisavljević *et al.* 2006, 2010a), presence of Balkan endemics and relicts (Džukić 1970, 1974, Džukić & Pasuljević 1979; Pasuljević & Džukić 1979; Džukić, 1980; Džukić & Kalezić 2004), occurrence of various faunal elements (Matvejev 1961; Džukić 1995; Macey *et al.* 2000; Džukić & Kalezić 2004; Vukov *et al.* 2013), presence of marginality of several species' ranges (Džukić 1974, Džukić & Pasuljević 1979; Pasuljević & Džukić 1979; Džukić, 1995; Džukić & Kalezić 2004), range fragmentation (Džukić 1974; Džukić & Kalezić 2004) and variable life-history characteristics of several lacertid species (Aleksić & Ljubisavljević 2001; Ljubisavljević *et al.* 2008, 2010b). It was also proven that the territory of the Balkan Peninsula, including Serbia, had been an important Pleistocene glacial refugium and a source for subsequent recolonizations of Europe (Guillaume *et al.* 1997; Džukić & Kalezić 2004; Böhme *et al.* 2007).

Concerning distribution of the lacertids, earlier faunistic publications (Méhely 1903; Karaman 1921, 1939; Radovanović 1941, 1951, 1964; Džukić 1972) tended to provide comprehensive data on the distribution of all lacertid species present in Serbia. On the other hand, majority of subsequent studies were focused on individual species which are endemic, peripheral or rare in the Balkans or in Serbia – *Algyroides nigropunctatus* (Duméril & Bibron, 1839) (Džukić 1970; Džukić & Pasuljević 1979), *Darevskia praticola* (Eversmann, 1834) (Džukić 1974; Pasuljević & Džukić 1979; Ljubisavljević *et al.* 2006), *Podarcis erhardii* (Bedriaga, 1882) (Džukić 1980; Crnobrnja-Isailović & Aleksić 1999), *Podarcis tauricus* (Pallas, 1814) (Méhely 1903; Džukić 1970, 1974; Ham *et al.* 1981; Crnobrnja-Isailović & Aleksić 1999; Ljubisavljević *et al.* 2010b), and *Zootoca vivipara* (von Jacquin, 1787) (Džukić 1974; Ivančević *et al.* 2007; Ljubisavljević *et al.* 2010a; Crnobrnja-Isailović *et al.* 2015). Consequently, very few distributional data for *Lacerta agilis* (Linnaeus, 1758), *Lacerta viridis* (Laurenti, 1768) and *Podarcis muralis* (Laurenti, 1768), which are considered common and widespread European species, have been published to date (Karaman 1939; Radovanović 1941; Karaman 1948; Radovanović 1964; Džukić 1972; Jović *et al.* 1997). The list of Serbian lacertid species and their general distribution could be inferred from general herpetological literature (Gasc *et al.* 1997; Arnold & Ovenden 2002; Sillero *et al.* 2014), but without precise distributional data and the corresponding maps.

The recent study of Tomović *et al.* (2014) was a breakthrough in Serbian faunistics, since it was the first publication in decades to provide comprehensive distribution and diversity patterns of all Serbian reptile species. However, this study presented only approximative, contour maps of actual and potential species distributions, without exact locality data or geographic positions.

Data concerning Serbian lacertid fauna, which were being collected during the last 50 years but have never been published greatly outnumber those which have been publicized. Their joint presentation and analysis gave us an opportunity for more precise insight in diversity and distribution patterns of Serbian lacertids.

Therefore, the aims of this study were to: (1) publish detailed distribution information concerning lacertids in Serbia, (2) provide standardized, 10 × 10 km UTM grid maps of all available distribution data, and (3) analyse patterns of lacertid diversity in Serbia.



**Figure 1.** Altitudinal and biogeographic regions of Serbia. Altitudinal regions: green – Pannonian, yellow – Peripannonian, orange – Mountain-Valley. Biogeographic regions: Bč – Bačka, Bt – Banat, Sr – Srem, Po – Pomoravlje, Š – Šumadija, C. – central Serbia, NE – north-eastern Serbia, NW – north-western Serbia, E – eastern Serbia, W – western Serbia, SE – south-eastern Serbia, SW – south-western Serbia, S – southern Serbia, K – Kosovo and M – Metohija.

## Material and Methods

### *Study group*

The lizard family Lacertidae (Oppel 1811) consists of about 280 species and is widely distributed in the Palearctic and Afrotropics (Arnold *et al.* 2007). The Balkan Peninsula is inhabited by 23 lacertid species (25 if Crete and the nearby islands are considered: Gasc *et al.* 1997; Arnold *et al.* 2007; Sillero *et al.* 2014). Lacertids are relatively small, diurnal and heliothermic lizards. Their daily pattern of activity varies according to locality and season. It can be unimodal during cold periods of the year or in areas with harsh climate, with a peak at midday. Activity is bimodal in the summer or in places with warm climate, with peaks in the morning and in late afternoon. In areas under temperate climates, lacertids undergo a period of brumation (Arnold 1987).

### *Study area*

The territory of Serbia encompasses three altitudinal regions: (1) parts of the Great Pannonian plain in the Vojvodina province in the north (0–200 m a.s.l.), (2) the Peripannonian lowlands and hills along southern banks of the Sava and Danube rivers and in the Velika Morava River valley (200–600 m a.s.l.), and (3) the Mountain-valley region (600–2,650 m a.s.l.) (Marković 1970) (Fig. 1). The Mountain-valley region includes the Dinaric mountain chain in the west and south-west, Scardo-Pindic mountains in the south, and the Balkan-Rhodopes mountains in central, eastern and south-eastern parts (Stevanović 1996). The climate of Pannonian parts of Serbia is continental, with cold winters and very hot summers; steppe climate elements are present, with dry summers, in some parts in the north and east. Peripannonian region and low mountains are under temperate continental climate. Alpine climate is dominant in mountainous regions above 800 m a.s.l. Sub-Mediterranean climate is present in the extreme south and south-east. Detailed regional climate analysis indicated that parts of Kosovo, Metohija, southern and south-eastern Serbia are under strong influence of the Mediterranean climate, that frequent alterations of hot and cold air masses were documented in Vojvodina province, and that canyons and gorges are known for climatic peculiarities which makes them important refugial habitats (Radovanović & Mijović 2005).

### *Methods*

All species considered in the present study were identified according to standard herpetological literature, by visual inspection of diagnostic characters on preserved specimens, in voucher photos or in the field (Arnold & Ovenden 2002). In the cases of species with specific habitat requirements (e.g. *D. praticola*, *P. erhardii*, *P. tauricus*, *Z. vivipara*, etc.) choice of adequate habitats or their fragments was essential for finding and identifying these species (Radovanović 1951; Arnold 1987). Regarding taxonomy and current nomenclature, we followed the work of Arnold *et al.* (2007).

This study was based on species' occurrence records from several sources. We used about 120 published literature records and more than 2,000 unpublished records, which came from: (1) Naturhistorisches Museum Wien (NMW), (2) authors' field observations, (3) the late prof. Gojko Pasuljević's field data, and (4) field data kindly donated by our colleagues (see Acknowledgements). We also used, to a lesser extent, data from field herpetology websites ([www.euroherp.com](http://www.euroherp.com); <http://en.balcanica.info>; [www.teraristika.org](http://www.teraristika.org)), collected by amateur herpetologists and confirmed by experts, and from the portal dedicated to mapping and monitoring of biological diversity of Serbia ([www.bioras.petnica.rs](http://www.bioras.petnica.rs)). When using data from the Internet, we complied with terms and conditions of websites, and asked site administrators and contributors for permissions to cite their entries. All the records we obtained were mapped in the 10 × 10 km UTM (Universal Transverse Mercator) geographic coordinate grid system. Since there have never been systematic efforts to survey the entire territory of Serbia, our dataset is still incomplete, but the lack of records of certain species from some areas does not necessarily imply their physical absence. For correct interpretation of our distributional maps, and to avoid sampling bias, we took into consideration other factors, such as relief, climate, and presence/absence of suitable habitats.

To identify potential lacertid diversity hotspots, we assessed species richness on a regional level, i.e. in the recognized biogeographic regions of Serbia (Marković 1970; Stevanović 1992): Bačka (Ba), Banat (Bt), Srem (Sr), Pomoravlje (Po), Šumadija (Š), central Serbia (C), north-eastern Serbia (NE), eastern Serbia (E), north-western Serbia (NW), south-eastern Serbia (SE), western Serbia (W), south-western Serbia (SW), southern Serbia (S), Kosovo (K), and Metohija (M) (Fig. 1). Also, we evaluated similarities among

biogeographic regions within Serbia and between Serbia and the neighbouring Balkan countries, using the Bray-Curtis dissimilarity index (Bray & Curtis 1957). Species distribution and diversity data for Albania, Bosnia and Herzegovina, Bulgaria, Croatia, Greece (excluding Crete and the nearby islands), FYR of Macedonia, Montenegro, Romania and Slovenia were given according to the contemporary literature (Gasc *et al.* 1997; Haxhiu 1998; Tvrtković *et al.* 1998; Arnold *et al.* 2007; Ljubisavljević *et al.* 2007; Petrov 2007; Krofel *et al.* 2009; Jablonski *et al.* 2012; Cogălniceanu *et al.* 2013; Podnar *et al.* 2014; Sillero *et al.* 2014; Sterijovski *et al.* 2014). In addition, for zoogeographic analysis, chorotypes were identified, following Vigna Taglianti *et al.* (1999).

## Results

The list of lacertids that inhabit the territory of Serbia includes eight species. Ranges of 50% of them are within marginal zones of their overall distributional ranges, while 50% of species show range fragmentation. Although *A. nigropunctatus* is subendemic, since its distribution reaches north-eastern Italy around Udine and Trieste (Gasc *et al.* 1997), we considered it as the Balkan endemic, because only a small part of its distribution range lies outside of the Balkan Peninsula. Thus, two species (*A. nigropunctatus* and *P. erhardii*) are endemic for the Balkans (Table 1).

The most widely distributed species of lacertids (*L. agilis*, *L. viridis* and *P. muralis*) occupy more than 50% of territory of Serbia each. Rare are the species related to steppe and forest-steppe habitats (*D. praticola* and *P. tauricus*), which occupy between 10% and 50% of territory of Serbia. Extremely rare species are those which occupy less than 5% of Serbia – areas with sub-Mediterranean climate in the extreme south and south-east (*A. nigropunctatus* and *P. erhardii*), or alpine habitats (*Z. vivipara*) (Figs. 2 and 3).

Regarding regional diversity of Serbia, the highest numbers of species were found in Metohija (8) and Kosovo (7). The lowest number of species was found in north-western Serbia and in Pomoravlje (3). Other regions were somewhat inbetween: Bačka, Srem and Šumadija have only four lacertid species, Banat, eastern and north-eastern Serbia had five species, and western, south-western, central, southern and south-eastern Serbia had six species each.

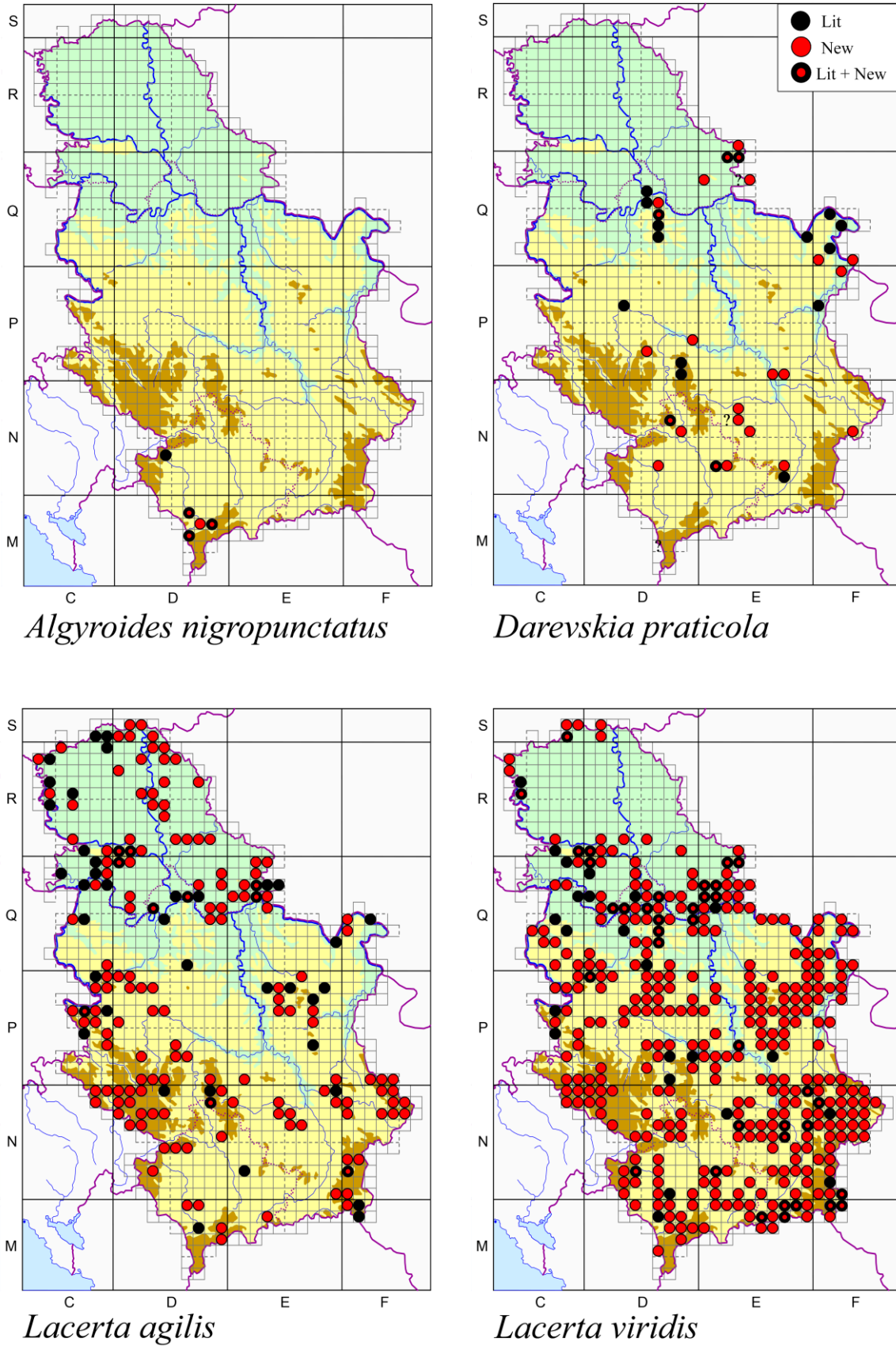
For every species, new records in Serbia (with region, broad location and exact locality) are given in the Appendix I. Data from the literature and Internet sources (with region, broad location, exact locality (when available) and reference) are presented in the Appendix II.

**Table 1.** Species list of Serbian lacertids with marginality, endemism status for Balkans and range fragmentation.

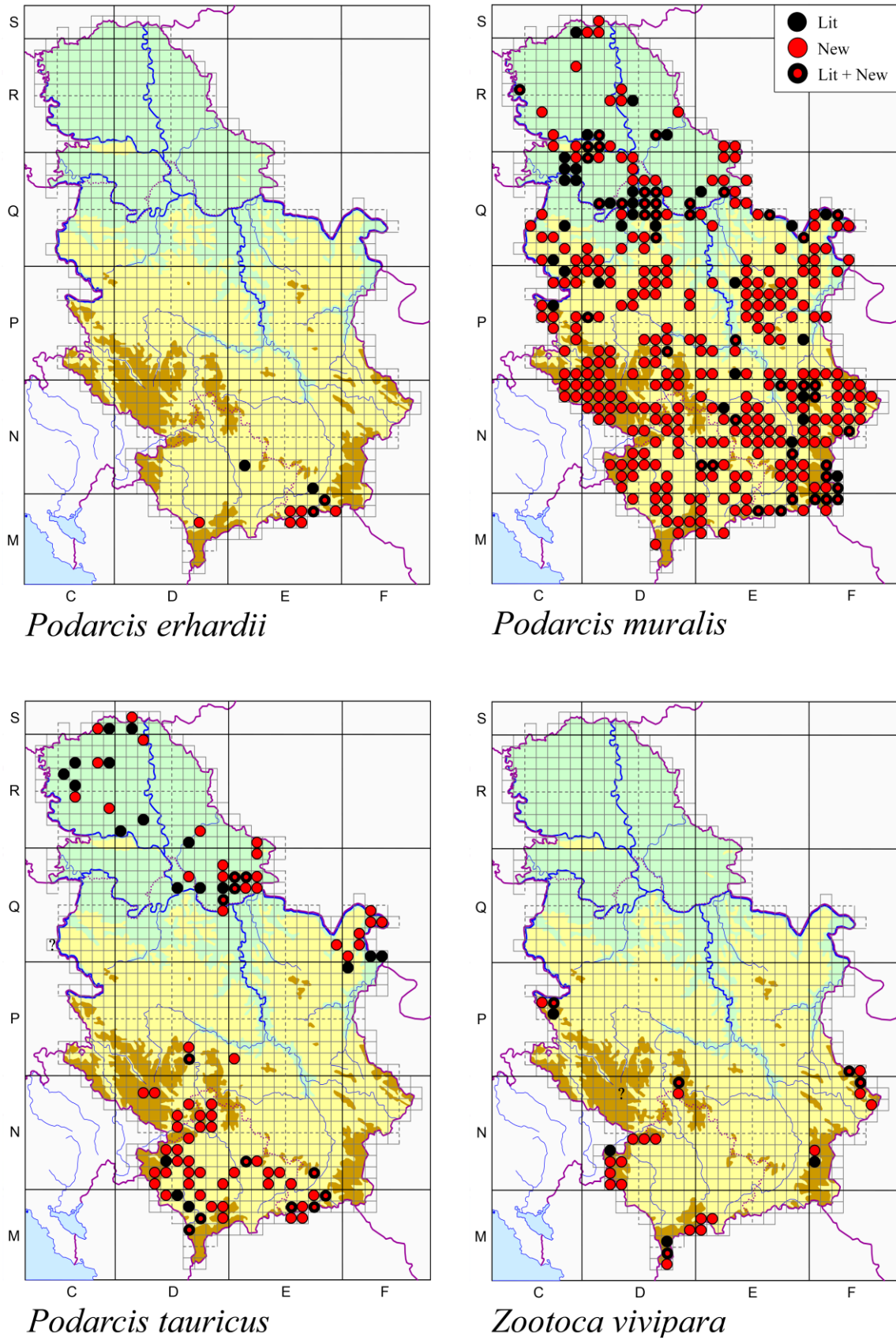
Species	Marginal zone	Endemic for the Balkans	Fragmented range
<i>Algyroides nigropunctatus</i>	+	+	
<i>Darevskia praticola</i>	+		+
<i>Lacerta agilis</i>			+
<i>Lacerta viridis</i>			
<i>Podarcis erhardii</i>	+	+	
<i>Podarcis muralis</i>			
<i>Podarcis tauricus</i>	+		+
<i>Zootoca vivipara</i>			+

### *Patterns of lacertid diversity – faunal similarity, chorology*

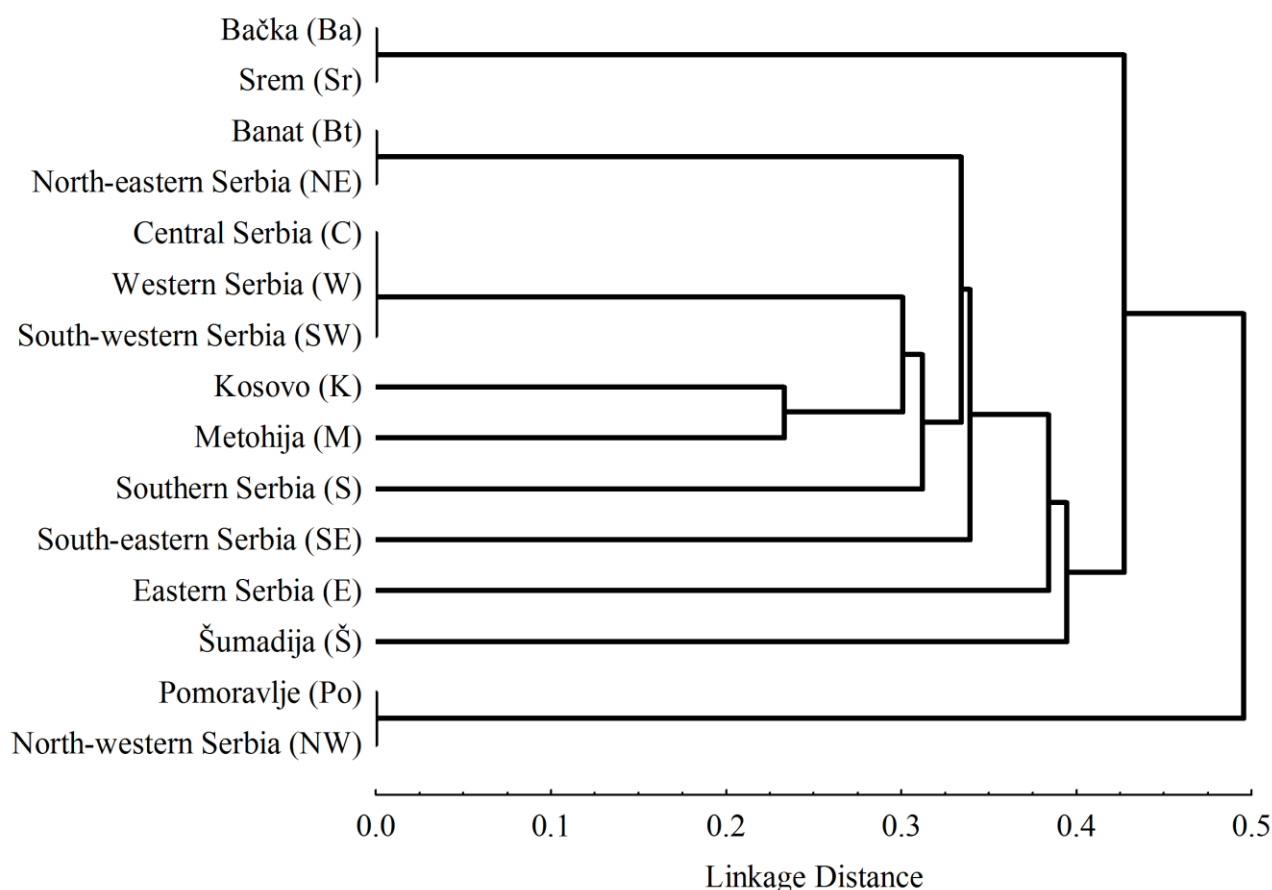
The Bray-Curtis dissimilarity index showed that some regions in Serbia have identical composition of lacertid species, and these form four clusters – (1) Bačka and Srem; (2) Banat and north-eastern Serbia; (3) western, south-western and central Serbia, and (4) north-western Serbia and Pomoravlje. Apart from these clusters, Kosovo and Metohija are the most similar mutually and group together with the central-western-southwestern cluster and southern Serbia. North-western Serbia and Pomoravlje regions are the most distinct, owing to scarcity in lacertid species (Fig. 4). In general, different regions in Serbia have fairly similar lacertid faunas; the average Bray-Curtis index value is 0.82. Apparently, differences in species richness are the main cause of dissimilarity of certain regions.



**Figure 2.** Records of *A. nigropunctatus*, *D. praticola*, *L. agilis* and *L. viridis* from Serbia (National grid UTM 10 × 10 km Reference). Lit – published records, New – new (field) records, Lit + New – published and field data, ? – doubtful field or literature data.



**Figure 3.** Records of *P. erhardii*, *P. muralis*, *P. tauricus* and *Z. vivipara* from Serbia (National grid UTM 10 × 10 km Reference). Lit – published records, New – new (field) records, Lit + New – published and field data, ? – doubtful field or literature data.



**Figure 4.** Cluster diagram of Bray–Curtis similarity Index of lacertid fauna for biogeographic regions in Serbia.

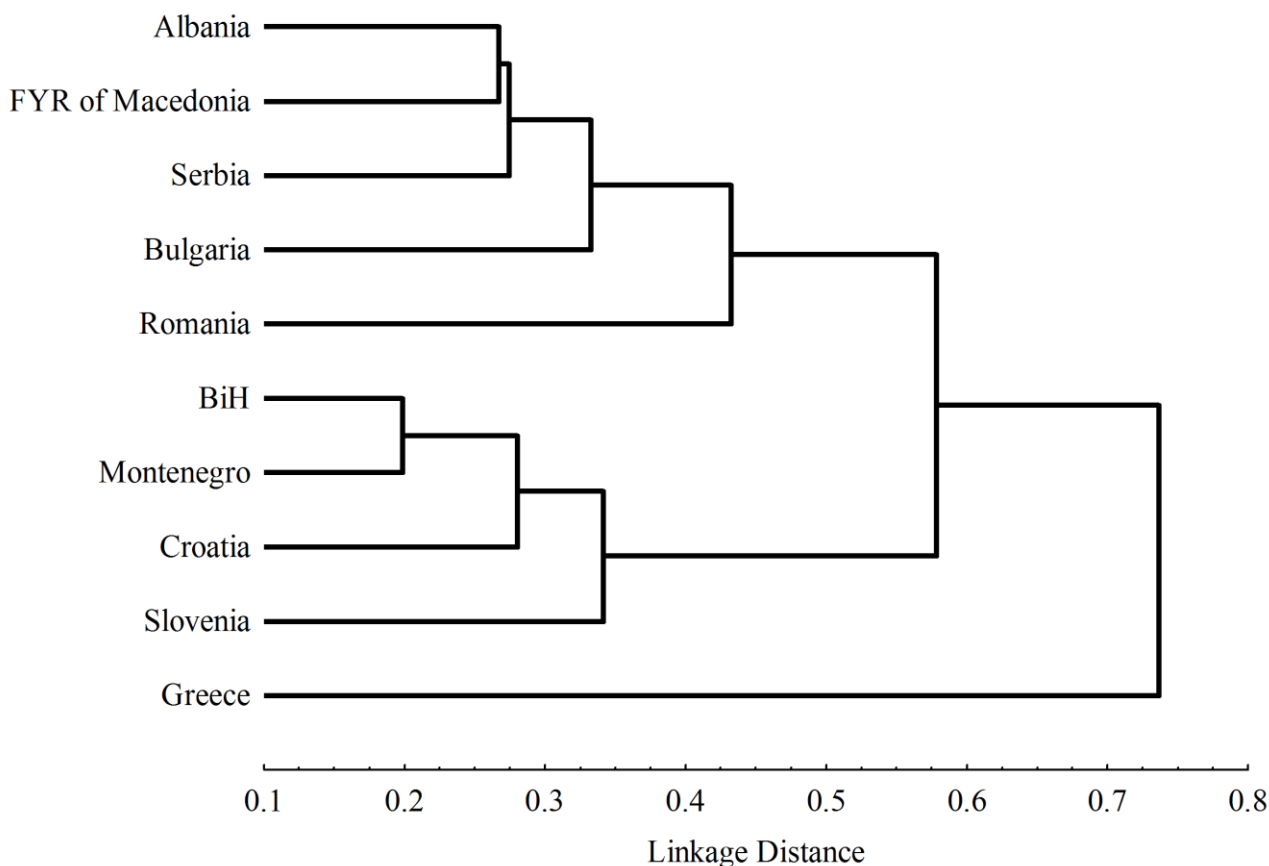
According to the Bray-Curtis dissimilarity index, Serbian lacertid fauna is most similar to faunas of Albania, FYR of Macedonia, Bulgaria and Romania. It is less strongly related to Bosnia and Herzegovina, Croatia, Montenegro and Slovenia, which form a separate cluster. The lacertid fauna of Greece emerged as the most distinct, owing to the large number of species and high level of endemism (Fig. 5).

Serbian lacertids are classified into three chorotypes, the most dominant being East-Mediterranean, represented by four species. The Euro-Siberian and South-European chorotypes are represented with two species each (Table 2).

**Table 2.** Chorotype classification of Serbian lacertids.

Chorotype	No. of species	Species
Euro–Siberian	2	<i>Lacerta agilis</i>
		<i>Zootoca vivipara</i>
South–European	2	<i>Lacerta viridis</i>
		<i>Podarcis muralis</i>
East–Mediterranean	4	<i>Algyroides nigropunctatus</i>
		<i>Darevskia praticola</i>
		<i>Podarcis erhardii</i>
		<i>Podarcis tauricus</i>





**Figure 5.** Cluster diagram of Bray–Curtis similarity Index of lacertid fauna for the Balkan countries.

## Discussion

Small number of recorded lacertid species puts Serbia among the countries with the lowest number of lacertids in the Balkans, along with Romania and FYR of Macedonia (Gasc *et al.* 1997; Sterijovski *et al.* 2014). However, this does not make Serbia insignificant concerning lacertid diversity in the Balkans, due to the presence of phenomena of biogeographical and evolutionary significance: peripheral populations, range fragmentation and Balkan endemics (Džukić 1995; Džukić & Kalezić 2004; Tomović *et al.* 2014, 2015).

Analysis of the information we obtained revealed that three lacertid species are present in all biogeographic regions of Serbia: *Lacerta viridis*, *L. agilis* and *Podarcis muralis*.

*Lacerta viridis* seems to be present in all parts of Serbia, but larger distribution gaps exist in northern Banat and the most of Bačka. This species is typically found in dense but sunlit bushy vegetation, such as open woods, field and wood edges, hedgerows, bramble and overgrown embankments (Arnold 1987; Arnold & Ovenden 2002). In the Pannonian part of Serbia, such habitats are present in the remaining steppes and forest-steppes of the Deliblatska peščara and Subotička peščara sands, loess deposits on the Sava and Danube river banks and in open forests of the Fruška gora and Vršачki breg mountains, where most findings of *L. viridis* were concentrated.

*Lacerta agilis* exhibits somewhat disjunct distribution. It is abundant in the Vojvodina province: Banat, Bačka and Srem regions. Conversely, south of the Sava and Danube, it is mostly restricted to mountains above 600 m a.s.l. This disjunct distribution in Serbia corresponds with intraspecific differentiation: Pannonian part of the range is inhabited by *L. agilis argus* (Laurenti, 1768), while southern mountainous habitats are occupied by the Balkan subspecies, *L. agilis bosnica* (Schreiber, 1912) (Kalyabina *et al.* 2001; Andres *et al.* 2014). This disjunction was most likely determined by climate and glaciation events (Andres *et al.* 2014). Belonging to the Euro-Siberian chorotype (according to Vigna Taglianti *et al.* 1999), *L. agilis* prefers temperate climate and is found in lowlands of the northern and central Europe, but is restricted to mountainous habitats in southern Europe (Arnold 1987; Arnold & Ovenden 2002). Serbian

distribution of this species reflects its general distribution pattern in Europe: it inhabits areas with continental and alpine climates, and avoids warmer moderate-continental and sub-Mediterranean climates.

*Podarcis muralis* is also abundant in Serbia, but its distribution north of the Sava and Danube rivers is dispersed, i.e. concentrated around the Fruška gora and Vršачki breg mountains, and in anthropogenic habitats (habitations and modified natural habitats) in the lowlands. The flat, moist lowlands of the Pannonian plain usually lack sunny, rocky habitats preferred by this species (Arnold 1987). Having in mind that *P. muralis* was initially described as hemerophilous, i.e. synanthropic, “kulturfolger” (Gruschwitz & Böhme 1986), and it was proven capable of expanding its range along anthropogenic corridors (Covaciu-Marcov *et al.* 2006; Gherghel *et al.* 2009), we assume that distribution of this species in some parts of the Pannonian plain could be a result of human activity during the historic times (Urošević *et al.* 2015). A detailed phylogeographic study is needed to confirm these assumptions.

Two species which reach their north-western range limits in Serbia are *Darevskia praticola* and *Podarcis tauricus* (Džukić 1970, 1974; Pasuljević & Džukić 1979; Crnobrnja-Isailović & Aleksić 1999; Ljubisavljević *et al.* 2006, 2010b).

The new, previously unpublished, findings of *D. praticola* populations expand the known distribution of this species in Serbia. Updated distribution map suggests that there could be even more populations of *D. praticola* still not recorded in suitable habitats in our country. *Darevskia praticola* is globally regarded with special concern, because its range is highly fragmented, and it is considered as Near Threatened by the IUCN (Agasyan *et al.* 2009). Marginal populations from Serbia are also distinct in certain life-history characteristics (Ljubisavljević *et al.* 2008). It should be noted that, based on morphological evidence, populations of *D. praticola pontica* (Lantz & Cyren, 1919), including those from the Balkans, have recently been raised to species level (*D. pontica*), while their genetic distinctiveness is yet to be confirmed (Tuniyev *et al.* 2011; Kosushkin & Grechko 2013). However, this nomenclatural question is out of the scope of the present study and does not make a difference to the total number of lacertid species recorded in Serbia.

*Podarcis tauricus* has a disjunct distribution range in general. It is a lowland species, associated with open steppe habitats, often sandy and with low herbaceous vegetation (Arnold & Ovenden 2002). According to general herpetological literature (Gasc *et al.* 1997; Arnold & Ovenden 2002), distribution range of *P. tauricus* consists of the “compact” part which reaches its western limits in eastern and southern parts of Serbia, and a smaller isolated range in southern Hungary and northern parts of Serbia. Field surveys and literature data reveal existence of some isolated populations in the Vojvodina province between these two parts of the species range. These populations imply that *P. tauricus* once had broader range, and that its current distribution is probably a consequence of spreading of arable areas, which lead to serious alterations of suitable open habitats (Böhme *et al.* 2009). On the other hand, there are implications that anthropogenic alterations of natural habitats (building of river embankments, floodplains regulation, etc.) could, in some cases, help this species spread into locations it previously had not inhabited (Urošević *et al.* 2015). The data collected by now suggest that more populations of this species could be discovered in the remaining steppe fragments in Serbia; these populations could provide better understanding of its distribution. There are also numerous new findings of *P. tauricus* in south-western, western and central Serbia, which expand its known distribution boundaries in southern parts of Serbia further to the west. A finding of this species in Mali Zvornik in NW Serbia, near the Drina river, mentioned in G. Pasuljević’s collection entry, is unexpected and presents an outlier in the known distribution pattern of this species. We treated this finding as doubtful and did not include it in the analyses of lacertid diversity.

To our knowledge, in Serbia high mountains are exclusive habitats for *Z. vivipara*, which is considered a glacial relict in the central Balkans (Guillaume *et al.* 1997; Džukić & Kalezić 2004). This species and its preferred habitats in Serbia are very scarce: high mountains (above 1,500 m a.s.l.) in eastern, central, south-western and south-eastern Serbia, Kosovo and Metohija (Stara planina, Čemernik, Vardenik, Kopaonik, Šar planina, Prokletije, and Mokra gora mountains), and mountainous habitats (900–1,000 m a.s.l.) in western Serbia (Tara Mt.). There are some old findings of this species which, despite significant efforts, have never been confirmed by subsequent faunistic research. We treated a finding of this species in the Duga Poljana village at the Pešter plateau, south-western Serbia (Karaman 1921) as doubtful. On the other hand, the record from the Suva planina mountain, mentioned by Karaman (1939) and Radovanović (1951), was given without precise locality data, and it was, most likely, a secondary citation from an uncertain source. Therefore, in the current analysis this particular locality was not included in the distribution map. Fragmented range and morphological differentiation between the studied populations from high-altitude habitats (Šar planina, Stara planina and Kopaonik mountains), and from lower-altitude relict habitats

on the Tara mountain (Ljubisavljević *et al.* 2010a) also highlight *Z. vivipara* as a top-concern species for Serbian herpetofauna.

Marginal populations of *A. nigropunctatus* and *P. erhardii* are found exclusively in the areas under the influence of the sub-Mediterranean climate (Džukić 1970; Džukić & Pasuljević 1979; Džukić 1980; Crnobrnja-Isailović & Aleksić 1999).

*Algyroides nigropunctatus* is the rarest lacertid in Serbia, known only from a few localities in the Metohija region along the Beli Drim river valley (Džukić 1970; Džukić & Pasuljević 1979). It inhabits the stony karst habitats in gorges of Beli Drim and Prizrenska Bistrica rivers, on elevations from 270 to 590m a.s.l., surrounded by degraded thermophilous forests (Džukić & Pasuljević 1979). Most new data are reconfirmations of the old published records, or are situated close to them. More populations of this species could be expected in the suitable habitats along the Beli Drim river and its tributaries.

*Podarcis erhardii* reaches its northern range boundaries in southern and south-eastern Serbia, Kosovo and Metohija. Published records included Pčinja river valley (Prohor Pčinjski monastery and Trgovište town), surroundings of Priština and Vranje (Radovanović 1964; Džukić 1980; Crnobrnja-Isailović & Aleksić 1999). The previously unpublished records of his species in Prizren (Metohija) and southern and south-eastern Serbia (in the valleys of Moravica, Južna Morava and Pčinja rivers) expanded the known distribution of this species in Serbia. *Podarcis erhardii* can generally be found on suitable stony and rocky habitats with low, dense and bushy vegetation (Arnold 1987; Arnold & Ovenden 2002). In Serbia, it is found in open, thermophilous forests on rocky substrate, on elevations from 400 to 780m a.s.l. (Crnobrnja-Isailović & Aleksić 1999). More populations of this species could be expected in suitable habitats under the influence of the sub-Mediterranean climate, but the existing northern boundary is unlikely to be changed.

In general, the major predictor of species richness is environmental heterogeneity – habitat diversity, topographic diversity and climatic peculiarities (Maes *et al.* 2005; Radovanović & Mijović 2005; Schouten *et al.* 2009; Buse & Griebeler 2012; Vukov *et al.* 2013; Tomović *et al.* 2014). Biogeographic regions of Serbia contain similar herpetofaunas, which differ mostly in overall numbers of species. Presence of three chorotypes points out the versatility of zoogeographical links, also important for local biodiversity (Džukić 1995; Džukić *et al.* 2001; Džukić & Kalezić 2004; Tomović *et al.* 2014). Another factor which influences our perception of the differences in species diversity is the sampling bias: for the Pomoravlje region, where only three lacertid species have been registered, conspicuously little distributional data are available. Sampling bias is also obvious for Šumadija, parts of north-western Serbia, Banat and Bačka.

The largest numbers of lacertid species can be found in southern Mountain-valley region, owing to long altitudinal gradient and elements of the sub-Mediterranean climate in the valleys of the Beli Drim (Kosovo and Metohija), Južna Morava and Pčinja rivers (southern and south-eastern Serbia). In recent faunistic investigations, several more Mediterranean reptile species were recorded in the Pčinja River valley (south-eastern Serbia): *Platyceps najadum* (Eichwald, 1831) (Crnobrnja-Isailović & Aleksić 1999), *Testudo graeca* (Linnaeus, 1758) (Tomović *et al.* 2004), and *Elaphe quatuorlineata* (Lacépède, 1789) (Ristić *et al.* 2006), and also in Prizren (Metohija) – *Mediodactylus kotschy* (Steindachner, 1870) (Ajtić & Tomović 2001). These findings highlighted the importance of Mediterranean climate influences along the valleys of the rivers listed above on herpetofaunal diversity (Tomović *et al.* 2014). It makes these areas crucial for conservation at the national level. Parts of Kosovo and Metohija are already proposed as national herpetofaunal hotspots (Tomović *et al.*, 2014).

Compared to other Balkan countries, Serbian lacertid fauna is most similar to those of Albania and the FYR of Macedonia, and then to Romanian and Bulgarian faunas, due to high number of East-Mediterranean taxa. The western Balkan countries (Slovenia, Croatia, Montenegro and Bosnia and Herzegovina) form a distinct cluster, mostly owing to the presence of Dinaric endemics *Dalmatolacerta oxycephala* (Duméril & Bibron, 1839) and *Dinarolacerta* spp. (Gasc *et al.* 1997; Arnold *et al.* 2007; Ljubisavljević *et al.* 2007), and of taxa characteristic for central and western Europe and the Apennine Peninsula: *Lacerta bilineata* (Daudin, 1802), *Iberolacerta horvathi* (Méhely, 1904), and *Podarcis siculus* (Rafinesque, 1810) (Gasc *et al.* 1997; Tvrtković *et al.* 1998; Krofel *et al.* 2009). Greece diverges from both clusters of countries, owing to large number of species and to high level of endemism on the Peloponnesus and Aegean islands (Gasc *et al.* 1997; Arnold *et al.* 2007).

When the pattern of diversity of lacertids is compared to the diversity pattern of all reptiles (Tomović *et al.* 2014), the distinction between eastern and western Balkan countries is more pronounced, and Slovenia groups together with the western Balkan cluster, while Greece still remains the most distinct. This indicates that, concerning lacertids, there are three distinct diversity areas in the Balkans, which

correspond to the six Balkan diversity centres proposed by Džukić & Kalezić (2004): Peripannonia and Dobrogea in the eastern Balkans, SW Croatia and Adriatic Triangle in the western Balkans and Evros and Peloponnesus in Greece. Considering lacertids, southern and south-eastern Serbia, and Metohija (valleys of the Beli Drim, Južna Morava and Pčinja rivers) should be treated as important diversity centres. This is due to the range overlapping of widely distributed species with East-Mediterranean species and with Balkan endemics that reach their northern and north-western range borders in Serbia.

There are still some lacertid species which are supposed to occur in Serbia, but their presence has not yet been confirmed by experts. *Lacerta trilineata* (Bedriaga, 1886), for instance, reaches its distribution boundary in the FYR of Macedonia, very close to border with Serbia (Sterijovski *et al.* 2014). Several East-Mediterranean reptile species are present in the Pčinja River valley, and many of those were only recently recorded (Džukić 1980; Crnobrnja-Isailović & Aleksić 1999; Tomović *et al.* 2004; Ristić *et al.* 2006). Since there are already unconfirmed sightings of *L. trilineata* in this area, we can assume that it is only a matter of time until the official expert confirmation of this species' presence in south-eastern Serbia.

One recently described species, *Dinarolacerta montenegrina* (Ljubisavljević, Arribas, Džukić & Carranza, 2007), formerly accounted as *Dinarolacerta mosorensis* (Kolombatović, 1886) (Džukić *et al.* 1997), is endemic to the Prokletije mountain massif (part of the Dinaric mountain chain), and is known only from two localities in Montenegro (Ljubisavljević *et al.* 2007, 2014) and one in Albania (Podnar *et al.* 2013). Parts of the Prokletije Massif lie in the bordering areas of Serbia (i.e. in western Metohija): *D. montenegrina* could be expected in adequate habitat – forests of Heldreich's pine (*Pinus heldreichii* H. Christ, 1863) in these areas (Džukić *et al.* 1997).

Recent finding of oviparous, lowland population of *Zootoca vivipara* in eastern Croatia, Slavonija region (Jelić & Bogdanović 2011; Baškiera & Jelić 2013) suggest that this species could also be found in western parts of the Bačka and Srem regions in Serbia, in the remaining suitable habitats. Possible presence of lowland *Z. vivipara* populations in Serbia would also be an extremely important finding for Serbian herpetofauna.

It should be kept in mind that our knowledge concerning the present distribution of lacertids in Serbia is far from complete, with large gaps, especially in northern and central parts of Serbia. Nevertheless, large amount of data presented in this study is a foundation for thorough, systematic faunistic investigations in future. Further studies should provide a more complete insight into the diversity and distribution of lacertids in Serbia and on the Balkan Peninsula.

### Acknowledgements

Research was funded by: Ministries of Education, Sciences and Technological Development (grant No. 173043) and of Agriculture and Environmental Protection (grant no. 401-00-00243/2014-08) of the Republic of Serbia (in the Appendix I referred to as the DNA project), and by the Rufford Small Grants Foundation (grant no. 12291-1) (In the Appendix I referred to as the Rufford project). The authors thank Dr Marjan Niketić and Dr Gordana Tomović (Belgrade) for help with distribution maps and biodiversity analyses. Aleksandar Četković, Aleksandra Rohalj, Ana Ivanović, Ana Miletić, Dejan Bogdanović, Đorđe Đoković, Jelena Pavlović, Luka Rubinjoni, Milivoj Krstić, Miloš Kalezić, Mirjana Stojković, Miroslav Marković, Maja Slijepčević, Mladen Vujošević, Nataša Tomašević-Kolarov, Neva Škrabar, Saša Antić, Sonja Đorđević, Tanja Vukov and Vladimir Žikić are gratefully acknowledged for sharing species distribution data and/or for help in the field. Also many thanks to Daniel Jablonski, Denis Čoso, Jiří Schwertner, Kristijan Lazić, Lukáš Blažej, Nenad Preradović and Vladimir Vrabec for permissions to cite their entries from <http://en.balcanica.info>. Some field data were provided by the members of the Serbian Herpetological Society “Milutin Radovanović”, BID “Josif Pančić” and the research station “Petnica”.

### References

- Agasyan, A., Avci, A., Tuniyev, B., Crnobrnja-Isailović, J., Lymberakis, P., Andrén, C., Cogalniceanu, D., Wilkinson, J., Ananjeva, N., Üzüm, N., Orlov, N., Podloucky, R., Tuniyev, S., Kaya, U., Böhme, W., Ajtic, R., Tok, V., Ugurtas, I. H., Sevinç, M., Crochet, P. A., Nettmann, H. K. & Krecsák, L. (2009) *Darevskia praticola*. In: IUCN 2013. IUCN Red List of Threatened Species. Version 2013.2. Available from: <[www.iucnredlist.org](http://www.iucnredlist.org)> (24.04.2014).
- Ajtić, R. & Tomović, Lj. (2001) First record of Kotschy's gecko *Cyrtodactylus kotschyi* (Steindachner, 1870) (Gekkonidae, Lacertilia) in FR Yugoslavia. *Archives of Biological Sciences*, 53(1–2), 23–24.

- Andres, C. & Franke, F. & Bleidorn, C. & Bernhard, D. & Schlegel, M. (2014) Phylogenetic analysis of the *Lacerta agilis* subspecies complex. *Systematics and Biodiversity*, 12(1), 43–54.
- Aleksić, I. & Ljubisavljević, K. (2001) Reproductive cycle in the Common Wall Lizard (*Podarcis muralis*) from Belgrade. *Archives of Biological Sciences*, 53(3–4), 73–81.
- Arnold, E. N. (1987) Resource partitioning among lacertid lizards in southern Europe. *Journal of Zoology*, 1, 739–782.
- Arnold, E. & Ovenden, D. (2002) *A Field Guide to the Reptiles and Amphibians of Britain and Europe*. Harper Collins Publishers, London, 288 p.
- Arnold, E. N., Arribas, O. & Carranza, S. (2007) Systematics of the Palearctic and Oriental lizard tribe Lacertini (Squamata: Lacertidae: Lacertinae), with descriptions of eight new genera. *Zootaxa*, 1430, 1–86.
- Baškiera, S. & Jelić, D. (2013) A comparative analysis of reproductive traits in viviparous and ovoviviparous populations of *Zootoca vivipara* (Von Jacquin, 1787). In: Žagar, A. (Ed.), *Book of Abstracts of 8<sup>th</sup> International symposium on the lacertids of the Mediterranean Basin*. Societas herpetologica slovenica, Koper, Slovenia, p. 49.
- Böhme, M., Fritz, U., Kottenko, T., Džukić, G., Ljubisavljević, K., Tzankov, N. & Berendonk, T. (2007) Phylogeography and cryptic variation within the *Lacerta viridis* complex (Lacertidae, Reptilia). *Zoologica Scripta*, 36(2), 119–131.
- Böhme, W., Lymberakis, P., Ajtić, R., Tok, V., Ugurtas, I. H., Sevinç, M., Crochet, P. A., Haxhiu, I., Krecsák, L., Sterijovski, B., Crnobrnja Isailović, J., Podloucky, R., Cogalniceanu, D. & Avci, A. (2009) *Podarcis tauricus*. In: IUCN 2013. IUCN Red List of Threatened Species. Version 2013.2. Available from: <www.iucnredlist.org> (20.02.2014).
- Bray, J. R. & Curtis, J. T. (1957) An ordination of upland forest communities of southern Wisconsin. *Ecological Monographs*, 27(4), 325–349.
- Buse, J. & Griebeler, E. M. (2012) Determinants and congruence of species richness patterns across multiple taxonomic groups on a regional scale. *International Journal of Zoology*, 1–12.
- Clarke, K. R. & Warwick, R. M. (1999) The taxonomic distinctness measure of biodiversity: weighting of step lengths between hierarchical levels. *Marine Ecology Progress Series*, 184, 21–29.
- Cogălniceanu, D., Rozyłowicz, L., Székely, P., Samoilă, C., Stănescu, F., Tudor, M., Székely, D. & Iosif, R. (2013) Diversity and distribution of reptiles in Romania. *ZooKeys*, 341, 49–76.
- Covaciu–Marcov, S. D., Bogdan, H. V. & Ferenti, S. (2006) Notes regarding the presence of some *Podarcis muralis* (Laurenti, 1768) populations on the railroads of western Romania. *North–Western Journal of Zoology*, 2(2), 126–130.
- Crnobrnja-Isailović, J. & Aleksić, I. (1999) The first record of *Coluber najadum* Eichwald (1831) in Serbia. *Archives of Biological Sciences*, 51(3), 47–48.
- Crnobrnja-Isailović, J., Dinov, J., Isailović, O. & Randelović, V. (2015) Westernmost record of *Zootoca vivipara* (Lichtenstein, 1823), in the Rhodope Massif, Serbia. *Herpetozoa*, 27(3–4), 162–165.
- Džukić, G. (1970) Beitrag zur kenntnis der verbreitung der *Algyroides nigropunctatus* Dumeril et Bibron in Jugoslawien. *Fragmenta Balcanica*, 7(16), 149–155.
- Džukić, G. (1972) Herpetološka zbirka Prirodnjačkog muzeja u Beogradu. *Glasnik Prirodnjačkog Muzeja u Beogradu, Serija B*, 27, 165–180.
- Džukić, G. (1974) Prilog herpetofauni Srbije. *Glasnik Prirodnjačkog Muzeja u Beogradu, Serija B*, 29, 105–110.
- Džukić, G. (1980) Drugi prilog herpetofauni Srbije. In: Društvo biosistematičara SR Srbije (Ed.), *Rezimei referata IV simpozijuma biosistematičara Jugoslavije*. Donji Milanovac, Jugoslavija, p. 85.
- Džukić, G. (1995) Diverzitet vodozemaca (Amphibia) i gmizavaca (Reptilia) Jugoslavije, sa pregledom vrsta od međunarodnog značaja. In: Stevanović, V. & Vasić, V. (Eds.), *Biodiverzitet Jugoslavije sa pregledom vrsta od međunarodnog značaja*. Biološki fakultet & Ecolibri, Beograd, pp. 447–469.
- Džukić, G. & Pasuljević, G. (1979) O rasprostranjenju ljuskavog guštera *Algyroides nigropunctatus* (Dumeril et Bibron, 1839) (Reptilia, Lacertidae). *Biosistematika*, 5(1), 61–70.
- Džukić, G. & Kalezić, M. (2004) The biodiversity of amphibians and reptiles in the Balkan Peninsula. In: Griffiths, H., Krystufek, B. & Reed, J.M. (Eds.), *Balkan Biodiversity. Pattern and Process in the European Hotspot*. Springer, Dordrecht, pp. 1–26.
- Džukić, G., Đorović, A., Kalezić, M. L., Aleksić, I. & Crnobrnja-Isailović, J. (1997) The Mosor Lizard occurs also in the Prokletije Mountain Massif. *University Thought – Natural Science*, 3(2), 61–62.

- Džukić G., Kalezić, M. L., Petkovski, S. & Sidorovska, V. (2001) General remarks on batracho- and herpetofauna of Balkan Peninsula; *In: Boškova, T. (Ed.), 75 years of Macedonian Museum of Natural History*. Prirodnoučen muzej na Makedonija, Skopje, pp. 195–204.
- Gasc, J. P., Cabela, A., Crnobrnja-Isailović, J., Dolmen, D., Grossenbacher, K., Haffner, P., Lescure, J., Martens, H., Martinez Rica, J. P., Maurin, H., Oliveira, M. E., Sofianidou, T. S., Veith, M. & Zuiderwijk, A. (1997) *Atlas of Amphibians and Reptiles in Europe*. Societas Europea Herpetologica & Museum National d'Histoire Naturelle, Paris, 496 p.
- Gaston, K. J. & David, R. (1994) Hotspots across Europe. *Biodiversity Letters*, 2, 108–116.
- Gaston, K. J., Pressey, R. L. & Margules, C. R. (2002) Persistence and vulnerability: retaining biodiversity in the landscape and in protected areas. *Journal of Bioscience*, 27(4), 361–384.
- Gherghel, I., Strugariu, A., Sahlean, T. C. & Zamfirescu, O. (2009) Anthropogenic impact or anthropogenic accommodation? Distribution range expansion of the common wall lizard (*Podarcis muralis*) by means of artificial habitats in the north-eastern limits of its distribution range. *Acta Herpetologica*, 4(2), 183–189.
- Gruschwitz, M. & Böhme, W. (1986) *Podarcis muralis* (Laurenti, 1768) – Mauereidechse. *In: Böhme, W. (Ed.): Handbuch der Reptilien und Amphibien Europas. Band 2/II, Echsen III (Podarcis)*. Aula-Verlag, Wiesbaden, pp. 155–208.
- Guillaume, C. P., Heulin, B. & Beshkov, V. (1997) Biogeography of *Lacerta (Zootoca) vivipara*: reproductive mode and enzyme phenotypes in Bulgaria. *Ecography*, 20(3), 240–246.
- Ham, I., Džukić, G., Tvrković, N., Kataranovski, D. & Mišuška, J. (1981) Faunistička i ekološka građa za sisare, vodozemce i gmizavce Deliblatskog peska. *Priroda Vojvodine*, 6–8, 29–41.
- Haxhiu, I. (1998) The Reptilia of Albania: Species composition, distribution, habitats. *Bonner zoologische Beiträge*, 48, 35–57.
- Ivančević, B., Savić, S., Sabovljević, M., Niketić, M., Tomović, G., Zlatković, B., Randelović, V., Lakušić, D., Četković, A., Pavićević, D., Krpo-Četković, J., Crnobrnja-Isailović, J., Puzović, S. & Paunović, M. (2007) Pregled vrsta Stare planine u Srbiji. *In: Lakušić, D. & Četković, A. (Eds.), Biodiverzitet Stare planine u Srbiji*. Regionalni centar za životnu sredinu za Centralnu i Istočnu Evropu, Beograd, pp. 159–219.
- Jablonski, D., Jandžik, D. & Gvoždik, V. (2012) New records and zoogeographic classification of amphibians and reptiles from Bosnia and Herzegovina. *North-Western Journal of Zoology*, 8(2), 324–337.
- Jelić, D. & Bogdanović, T. (2011) Preliminary data on existence of *Zootoca vivipara* ssp. *pannonica* (Lac & Kluch, 1968) in Croatia. *Hyla*, 1, 77–79.
- Jelić, D., Ajtić, R., Sterijovski, B., Crnobrnja-Isailović, J., Lelo, S. & Tomović, Lj. (2013) Distribution of the genus *Vipera* in the western and central Balkans. *Herpetozoa*, 25(3–4), 109–132.
- Jović, D., Horvat, A. & Randjelović, V. (1997) Vodozemci i gmizavci Sićevačke klisure. *Natura Naissi*, 5, 31–34.
- Kalyabina, S. A., Milto, K. D., Ananjeva, N. B., Legal, L., Joger, U. & Wink, M. (2001) Phylogeography and systematics of *Lacerta agilis* based on mitochondrial cytochrome b gene sequences: first results. *Russian Journal of Herpetology*, 8(2), 149–159.
- Karaman, S. (1921) Beiträge zur Herpetologie von Jugoslawien. *Glasnik Hrvatskog Prirodoslovnog društva*, 33, 194–209.
- Karaman, S. (1939) Über die Verbreitung der Reptilien in Jugoslawien. *Annales Musei Serbiae Meridionalis*, 1, 1–20.
- Karaman, S. (1948) Prilog herpetologiji sjeverne Srbije. *Prirodoslovna Istraživanja*, 24, 51–74.
- Kosushkin, S. A. & Grechko, V. V. (2013) Molecular genetic relationships and some issues of systematics of rock lizards of the genus *Darevskia* (Squamata: Lacertidae) based on locus analysis of SINE-type repeats (Squam1). *Russian Journal of Genetics*, 49(8), 857–869.
- Krofel, M., Cafuta, V., Planinc, G., Sopotnik, M., Šalamun, A., Tome, S., Vamberger, M. & Žagar, A. (2009) Razširjenost plazilcev v Sloveniji: pregled podatkov, zbranih do leta 2009. *Natura Sloveniae*, 11(2), 61–99.
- Ljubisavljević, K., Orlova, V., Džukić, G. & Kalezić, M. L. (2006) Geographic patterns in morphological variation in the meadow lizard, *Darevskia praticola* (Lacertidae): Taxonomical and biogeographical implications. *Periodicum Biologorum*, 18(3), 47–55.

- Ljubisavljević, K., Arribas, O., Džukić, G. & Carranza, S. (2007) Genetic and morphological differentiation of Mosor rock lizards, *Dinarolacerta mosorensis* (Kolombatovic, 1886), with the description of a new species from the Prokletije Mountain Massif (Montenegro) (Squamata: Lacertidae). *Zootaxa*, 1613, 1–22.
- Ljubisavljević, K., Džukić, G. & Kalezić, M. L. (2008) Female reproductive life history traits of the meadow lizard, *Darevskia praticola* (Eversmann, 1834) (Squamata: Lacertidae) from the westernmost portion of the species range. *Polish Journal of Ecology*, 56(2), 289–297.
- Ljubisavljević, K., Jović, D. & Džukić, G. (2010a) Morphological variation of the common lizard (*Zootoca vivipara* Jacquin, 1787) in the Central Balkan. *Archives of Biological Sciences*, 62(3), 791–799.
- Ljubisavljević, K., Džukić, G. & Kalezić, M. L. (2010b) Female reproductive characteristics of the Balkan wall lizard (*Podarcis taurica*) in the northwestern periphery of its range. *Central European Journal of Biology*, 5(3), 391–395.
- Ljubisavljević, K., Polović, L., Vuksanović, S. & Iković, V. (2014) A new record of the Prokletije rock lizard, *Dinarolacerta montenegrina* (Squamata: Lacertidae) in Montenegro. *Ecologica Montenegrina*, 1, 201–203.
- Macey, J. R., Schulte, J. A., Larson, A., Ananjeva, N. B., Wang, Y., Pethiyagoda, R., Rastegar-Pouyani, N. & Papenfuss, T. J. (2000) Evaluating trans-Tethys migration: an example using acrodont lizard phylogenetics. *Systematic Biology*, 49(2), 233–256.
- Maes, D., Bauwens, D., De Bruyn, L., Anselin, A., Vermeersch, G., Landuyt, W. V., De Knijf, G. & Gilbert, M. (2005) Species richness coincidence: conservation strategies based on predictive modelling. *Biodiversity and Conservation*, 14(6), 1345–1364.
- Marković, J. Đ. (1970) *Geografske oblasti Socijalističke Federativne Republike Jugoslavije*. Zavod za udžbenike i nastavna sredstva Srbije, Beograd, 823 p.
- Margules, C. R., Pressey, R. L. & Williams, P. H. (2002) Representing biodiversity: data and procedures for identifying priority areas for conservation. *Journal of Biosciences*, 27(4), 309–326.
- Matvejev, S. D. (1961) *Biogeografija Jugoslavije*. Beograd Biološki institut NR Srbije, Beograd, 232 p.
- Médail, F. & Quézel, P. (1999) Biodiversity hotspots in the Mediterranean Basin: setting global conservation priorities. *Conservation Biology*, 13(6), 1510–1513.
- Méhely, L. (1903) Adatok a deliblati homokpuszta és a Lokva-hegység faunájához. *Állattani közlemények*, 2, 93–105.
- Myers, N. (1988) Threatened biotas: “Hot Spots” in tropical forests. *The Environmentalist*, 8(3), 187–208.
- Pasuljević, G. & Džukić, G. (1979) Još jedna populacija šumskog guštera – *Lacerta praticola pontica* Lantz et Cyren (Reptilia: Lacertidae) na Balkanskom poluostrvu. *Biosistematika*, 5, 181–186.
- Petrov, V. (2007) Amphibians and reptiles of Bulgaria: fauna, vertical distribution, zoogeography, and conservation. In: Fet, V. & Popov, A. (Eds.), *Biogeography and Ecology of Bulgaria*. Springer-Verlag, Berlin, pp. 85–107.
- Podnar, M., Bruvo Mađarić, B. & Mayer, W. (2014) Non-concordant phylogeographical patterns of three widely codistributed endemic western Balkans lacertid lizards (Reptilia, Lacertidae) shaped by specific habitat requirements and different responses to Pleistocene climatic oscillations. *Journal of Zoological Systematics and Evolutionary Research*, 52(2), 119–129.
- Radovanović, M. (1941) Zur Kenntnis der Herpetofauna des Balkans. *Zoologischer Anzeiger*, 136, 145–159.
- Radovanović, M. (1951) *Vodozemci i gmizavci naše zemlje*. Naučna knjiga, Beograd, 250 p.
- Radovanović, M. (1964) Die Verbreitung der Amphibien und Reptilien in Jugoslawien. *Senckenbergiana Biologica*, 45, 553–561.
- Radovanović, M. & Mijović, D. (2005) Climatic peculiarities as the earth heritage elements of Serbia. *Geographica Pannonica*, 9, 9–12.
- Ristić, N., Tomović, Lj., Ajtić, R. & Crnobrnja-Isailović, J. (2006) First record of the four-lined snake *Elaphe quatuorlineata* (Lacépède, 1789) in Serbia. *Acta Herpetologica*, 1(2), 135–139.
- Schouten, M. A., Verweij, P. A., Barendregt, A., Kleukers, R. M. J. C., Kalkman, V., J. & de Ruiter, P. C. (2009) Determinants of species richness patterns in the Netherlands across multiple taxonomic groups. *Biodiversity and Conservation*, 18(1), 203–217.
- Sillero, N., Campos, J., Bonardi, A., Corti, C., Creemers, R., Crochet, P.-A., Crnobrnja Isailović, J., Denoël, M., Ficetola, G. F., Gonçalves, J., Kuzmin, S., Lymberakis, P., de Pous, P., Rodríguez, A., Sindaco,

- R., Speybroeck, J., Toxopeus, B., Vieites, D. R. & Vences, M. (2014) Updated distribution and biogeography of amphibians and reptiles of Europe. *Amphibia-Reptilia*, 35, 1–31.
- Stevanović, V. (1992) Floristička podela teritorije Srbije sa pregledom viših horiona i odgovarajućih flornih elemenata. In: Sarić, M. R. (Ed.), *Flora Srbije 1*. Srpska akademija nauka i umetnosti, Beograd, pp. 47–56.
- Stevanović, V. (1996) Analysis of the Central European and Mediterranean orophytic element on the mountains of the Western and Central Balkan Peninsula, with special reference to endemics. *Bocconea*, 5(1), 77–97.
- Sterijovski, B., Tomović, Lj. & Ajtić, R. (2014) Contribution to the knowledge of the Reptile fauna and diversity in FYR of Macedonia. *North-Western Journal of Zoology*, 10(1), 83–92.
- Tomović, Lj., Ajtić, R., Đoković, Đ. & Antić, S. (2004) Records of *Testudo graeca iberica* Pallas, 1814 in Serbia and Montenegro. *Herpetozoa*, 17(3–4), 189–191.
- Tomović, Lj., Ajtić, R., Ljubisavljević, K., Urošević, A., Jović, D., Krizmanić, I., Labus, N., Đorđević, S., Kalezić, M. L., Vukov, T. & Džukić, G. (2014) Reptiles in Serbia — distribution and diversity patterns. *Bulletin of the Natural History Museum*, 7, 129–158.
- Tomović, Lj., Urošević, A., Ajtić, R., Krizmanić, I., Simović, A., Labus, N., Jović, D., Krstić, M., Đorđević, S., Anđelković, M., Golubović, A. & Džukić, G. (2015). Contribution to the knowledge of distribution of Colubrid snakes in Serbia. *Ecologica Montenegrina*, 2 (3), 162–186.
- Tuniyev, S. B., Doronin, I. A., Kidov, A. A. & Tuniyev, B. S. (2011) Systematic and geographical variability of meadow lizard, *Darevskia praticola* (Reptilia: Sauria) in the Caucasus. *Russian Journal of Herpetology*, 18(4), 295–316.
- Tvrtković, N., Lazar, B., Tome, S. & Grbac, I. (1998) The western green lizard *Lacerta (viridis) bilineata* Daudin, 1804 (Sauria: Lacertidae) in Slovenia and Croatia. *Natura Croatica*, 7, 363–369.
- Urošević, A., Tomović, Lj., Ajtić, R., Simović, A. & Džukić, G. (2015) Alterations in the reptilian fauna of Serbia: Introduction of exotic and anthropogenic range expansion of native species. *Herpetozoa*, 28(3–4), in press.
- Vigna Taglianti, A., Audisio, P., Biondi, M., Bologna, M., Carpaneto, G., De Biase, A., Fattorini, S., Piattella, E., Sindaco, R., Venchi, A. & Zapparoli, M. (1999) A proposal for a chorotype classification of the Near East fauna, in the framework of the western Palearctic region. *Biogeographia*, 20, 31–59.
- Vukov, T., Kalezić, M. L., Tomović, Lj., Krizmanić, I., Jović, D., Labus, N. & Džukić, G. (2013) Amphibians in Serbia – Distribution and diversity patterns. *Bulletin of the Natural History Museum*, 6, 90–112.
- Warwick, R. M. & Clarke, K. R. (1995) New 'biodiversity' measures reveal a decrease in taxonomic distinctness with increasing stress. *Marine Ecology Progress Series*, 129, 301–305.



## Appendix I – unpublished records

v. – village, r. – river, Mt. – mountain

### *Algyroides nigropunctatus*

Metohija: Prizren, r. Prizrenska Bistrica gorge, Dušanov grad, DM87, R. Ajtić; Duvška klisura gorge, Vrbički potok, DM87, R. Ajtić; v. Đonaj, DM77, G. Džukić; v. Našec, r. Beli Drim, DM77, G. Džukić; v. Vrbnica, DM66, G. Pasuljević; v. Zjum, DM68, G. Džukić.

### *Darevskia praticola*

Banat: Bela Crkva, Siga, EQ37, M. Krstić; v. Kaluderovo, Vrla Strana, EQ47, M. Krstić; Deliblatska Peščara Sand, v. Šušara, EQ07, G. Džukić; Vršac, r. Sočica, EQ39, M. Krstić; v. Malo Središte, Orlovo brdo hill, EQ39, M. Krstić; v. Markovac, EQ39, M. Krstić; Puževo brdo, ER30, I. Krizmanić; v. Mesić, Kulmea, EQ39, M. Krstić; Mesički potok, EQ39, M. Kalezić; Vršački Breg Mt., Česta, EQ29, M. Kalezić; Đakov Vrh, EQ29, A. Urošević; Gudurički Vrh, EQ39, M. Krstić; Kamenarica, EQ39, M. Krstić; Lisičja Glava, EQ29, M. Krstić; Široko Bilo, EQ29, A. Urošević; v. Markovac, Vršišor, EQ39, M. Krstić; Vršačka Glavica, EQ29, M. Krstić; Central Serbia: Sokolovica Mt., Prolom Banja, EN36, G. Pasuljević; v. Bresnik, EN37, I. Krizmanić; v. Rudare, EN26, Lj. Tomović; Eastern Serbia: Niš, Berčinac, EP60, Lj. Tomović; v. Miljkovac, r. Toponička, EP60, EP70, I. Krizmanić; Pirot, v. Vlasi, r. Jerma - gorge, FN35, M. Kalezić; Vlaška Planina Mt., v. Trnski Odorovci, Monastery Poganovo, FN35, I. Krizmanić; Kosovo: Priština, Grmija Hill, EN12, EN22, G. Pasuljević; Rogozna Mt., v. Grižani, DN76, G. Pasuljević; Zvečan, v. Banjska, DN85, G. Pasuljević; v. Bresnica, DN85, G. Pasuljević; Metohija: Istok, v. Osojane, DN62, G. Pasuljević; Koritnik Mt., v. Rapča, DM65, G. Pasuljević; North-eastern Serbia: Negotin, v. Plavna, FQ00, G. Džukić; v. Radujevac, FQ30, R. Ajtić; v. Srbovo, FP29, R. Ajtić; Southern Serbia: Pljačkovica Mt., v. Drenovac, EN72, I. Krizmanić; Radan Mt., v. Donji Gajtan, EN45, Rufford project; Šumadija: Avala Mt., Antena, DQ64, A. Urošević; Čarapičev Brest, DQ64, A. Simović; Motel, DQ64, A. Simović; peak, DQ64, A. Simović; v. Beli Potok, DQ65, G. Džukić; v. Ripanj, Šuplja stena, DQ64, A. Urošević; v. Zuce, DQ64, A. Simović; Beograd, Voždovac, Banjica, DQ55, S. Đorđević; Trstenik, v. Grabovac, Jerinin Grad, DP93, A. Simović; western Serbia: Čemerno Mt., Belo Vrelo, DP52, A. Golubović.

### *Lacerta agilis*

Bačka: Apatin, Kurjačica, CR45, I. Krizmanić; Mirkovićevo Bara, CR45, I. Krizmanić; Bačka Palanka, v. Karađorđevo, CR61, I. Krizmanić; v. Mladenovo, Bukinski rit, CR61, I. Krizmanić; Bačka Topola, v. Svetičevo, Čiker, DR07, I. Krizmanić; Bečej, Mrtva Tisa, DR25, I. Krizmanić; Kanjiža, v. Male Pijace, Kapetanski rit, DS10, I. Krizmanić; Ludoško Jezero Lake, v. Hajdukovo, DS00, DS10, I. Krizmanić; Odžaci, v. Bački Brestovac, CR64, I. Krizmanić; Paličko Jezero Lake, v. Palić, DS00, I. Krizmanić; Senta, Čarda, DR28, I. Krizmanić; r. Tisa, DR28, I. Krizmanić; Sombor, v. Bački Breg, Karapandža, CR38, I. Krizmanić; v. Riđica, Plazović, CR59, I. Krizmanić; Subotica, v. Bački Vinogradi, Seleven, DS11, I. Krizmanić; Lofej, DS10, I. Krizmanić; v. Horgoš, Kamaraš pond, DS21, DNA project; Veliki pašnjak, DS11, DNA project; Banat: Bela Crkva, Mrtva Nera, EQ26, G. Džukić; v. Crvena Crkva, Dolić, EQ27, M. Krstić; v. Češko Selo, EQ27, A. Urošević; v. Kusić, r. Nera, EQ36, M. Krstić; Beograd, Palilula, Pančevački rit, DQ66, M. Andjelković; Čoka, r. Aranka, DR49, DNA project; v. Banatski Monoštor, DR48, DNA project; v. Crna Bara, DR49, DNA project; v. Vrbica, DR49, DNA project; Deliblatska Peščara Sand, Kremenjak, EQ16, EQ17, I. Krizmanić; v. Češko Selo, EQ27, M. Krstić; v. Deliblato, Velika voda, EQ06, I. Krizmanić; v. Kajtasovo, EQ26, A. Simović; Mali Pesak, Svinjska plaža, EQ27, M. Kalezić; v. Šumarak, Vrela, EQ16, G. Džukić; Majur bara, EQ06, EQ16, G. Džukić; r. Nera, Karađorđev lug, EQ16, M. Kalezić; v. Vračev Gaj, r. Nera, obala, EQ26, M. Kalezić; Volavska paša, DQ97, DQ98, I. Krizmanić; Kikinda, v. Mokrin, DR48, DR58, DNA project; Kovin, Kovin bridge, DQ94, DQ95, A. Urošević; Nova Crnja, v. Srpska Crnja, DR76, R. Ajtić; Novi Bečej, Slano Kopovo, DR35, DNA project; surrounding, DR34, DNA project; v. Kumane, DR44, DNA project; v. Novo Miloševo, DR46, DNA project; Novi Kneževac, surrounding, DR39, DNA project; v. Banatsko Arandjelovo, DR39, DNA project; v. Filić, DS30, DNA project; v. Podlokaj, DR49, DNA project; Pančevo, DQ77, I. Krizmanić; v. Banatski Brestovac, Ponjavica pond, DQ85, DNA project; Jabkov Cvet, DQ84, DNA project; Sečanj, v. Banatska Dubica, DR81, I. Krizmanić; Vršac, v. Kuštilj, Boruga, EQ28, M. Krstić; v. Markovac, Ogašu Mikuluj, EQ39, I. Krizmanić; v. Mesić, Dumbrava, EQ39, M. Kalezić; Vršački Breg Mt., Mali Rit, EQ29, M. Krstić; Široko Bilo, Vršačka kula, EQ29, I. Krizmanić; Zrenjanin, v. Ečka, Carska Bara pond, DR51, DNA project; v. Melenci, DR43, DR44, Lj. Tomović; v. Orlovat, most, DR61, A. Simović; v. Tomaševac, r. Tamiš, DR61, DR71, I. Krizmanić; Central Serbia: Bojnik, v. Dušanovo, Pašina Česma, EN66, I. Krizmanić; Kopaonik Mt., Jošanička Banja, r. Gobeljska reka, DP80, I. Krizmanić; Trepča, DN95, G. Džukić; Treska, DN88, G. Džukić; v. Brzeće, DN99, I. Krizmanić; Ravelj Hill, DN99, Lj. Tomović; v. Merčez, Gužvenički potok, EN08, I. Krizmanić; Kruševac, Klik Hill, EP10, R. Ajtić; Pasjača Mt., Pasjački vrh, EN47, EN57, I. Krizmanić; Prokuplje, Velika Guba, EN48, I. Krizmanić; Stolovi Mt., Usovica, DP62, A. Simović; Eastern Serbia: Pirot, v. Držina,

FN37, I. Krizmanić; Sićevačka Klisura Gorge, Kunovica Hill, EN89, D. Jović; Stara Planina Mt., Arbinje, FN49, Lj. Tomović; Babin Zub, FP30, A. Simović; Bratkova Strana, FN49, A. Simović; Jabučko Ravnište, FP20, A. Simović; Javor, Široke luke, FN58, I. Krizmanić; Kopren, FN49, A. Simović; Ponor, FN49, A. Simović; Srebrna glava, FN57, A. Simović; Stražna Čuka, FN49, A. Simović; Šošina vunija - Kopren, FN49, D. Jović; v. Dojkinci, FN48, I. Krizmanić; Dojkinački ponor, FN49, Lj. Tomović; Velika Lukanja, FN49, G. Džukić; Vražja Glava, FP40, A. Simović; Vrtibog, FN49, D. Jović; Zavojsko Jezero Lake, v. Zavoje, FN39, I. Krizmanić; r. Visočica - gorge, FN48, I. Krizmanić; Žarkova Čuka, FP30, A. Simović; Suva Planina Mt., Rubovica, FN07, G. Džukić; Trešten vrh, Rakoš česma, FN08, I. Krizmanić; v. Kosmovac, Kosmovačka točila, EN98, D. Jović; v. Mokra, r. Mokranska, FN08, I. Krizmanić; Svrlijig, town, EP90, I. Krizmanić; Svrlijske Planine Mts., v. Izvor, EP90, I. Krizmanić; Vidlič Mt., FN47, I. Krizmanić; Kosovo: Kopaonik Mt., Belo Brdo, DN88, I. Krizmanić; Šar Planina Mt., Ošljak, v. Mušnikovo, DM96, R. Ajtić; v. Sevice, DM97, I. Krizmanić; Vitina, v. Begunce, EM38, I. Krizmanić; Metohija: Orahovac, DM69, DM79, G. Pasuljević; Prokletije Mts., Rugovska klisura, Zablaće, DN32, I. Krizmanić; North-eastern Serbia: Beljanica, v. Strmosten, r. Resava - gorge, EP48, S. Đorđević; Boljevac, v. Mali Izvor, r. Radovanska, EP75, I. Krizmanić; Đerdapska Klisura Gorge, Dlboka, FQ04, I. Krizmanić; Kusi Rt, FQ03, I. Krizmanić; Kučajske Planine Mts., v. Senjski Rudnik, Požare, EP47, I. Krizmanić; v. Sisevac, r. Crnica, EP46, I. Krizmanić; Monastery Sisevac, EP46, I. Krizmanić; Velika Papratna, EP56, I. Krizmanić; Malinik Mt., v. Bogovina, r. Bogovinska, EP76, I. Krizmanić; Žagubica, r. Mlava, vrelo, EP69, I. Krizmanić; north-western Serbia: Bajina Bašta, v. Gvozdac, CP88, I. Krizmanić; Loznica, v. Lešnica, CQ64, M. Vujošević; Maljen Mt., Divčibare, Kraljev sto, DP28, I. Krizmanić; Golubac, DP18, I. Krizmanić; r. Bukovska, DP18, I. Krizmanić; Medvednik Mt., r. Obnica, Babac Hill, CQ90, I. Krizmanić; Vukobrača, CP99, I. Krizmanić; Povlen Mt., Debelo Brdo, CP98, I. Krizmanić; Pašina Ravan, CP98, I. Krizmanić; r. Gradac, Monastery Čelije, DP09, I. Krizmanić; v. Zarožje, CP98, I. Krizmanić; Sremska Mitrovica, v. Zasavica, Zasavica pond, CQ87, I. Krizmanić; Suvobor Mt., Gorice, DP38, G. Džukić; Ravna Gora, Grab spring, DP38, S. Đorđević; Valjevo, v. Petnica, Rogljevići, DP19, I. Krizmanić; Pomoravlje: Veliko Gradište, Srebrno Jezero, Ostrovo, EQ35, A. Urošević; South-eastern Serbia: Besna kobila Mt., peak, FN00, DNA project; v. Kriva Feja, EN90, M. Kalezić; Čemernik Mt., Mali Čemernik, FN03, I. Krizmanić; Dukat Planina Mt., r. Radovnica, Crvene bare, FM09, Lj. Tomović; Karamanica Mt., FM09, DNA project; Vardenik Mt., Veliki Strešer, FN02, G. Džukić; Vilino kolo, FN02, M. Kalezić; Vlasina Plateau, v. Klisura, Kovačka Mahala, FN13, G. Džukić; v. Mlačište, Blato, Blagojino Jezero Lake, FN03, G. Džukić; v. Vlasina Stojkovićeve, Stojkovića mahala, Đumurkana, FN13, M. Kalezić; Southern Serbia: Radan Mt., r. Pusta Reka, EN56, I. Krizmanić; South-western Serbia: Giljeva Mt., Jelenak, DN18, R. Ajtić; v. Trijebine, DN18, I. Krizmanić; Golija Mt., v. Gleđica, r. Golijska, DP30, I. Krizmanić; v. Gradac, Agine livade, DP40, A. Golubović; Jadovnik Mt., Katunić peak, DN09, A. Simović; Kozomor peak, DN09, A. Simović; Mali Jadovnik, DN09, A. Simović; Savin krš, CN99, A. Simović; v. Milošev Do, DN09, A. Simović; Kamena Gora Mt., CN99, A. Simović; Crni Vrh, CN88, A. Simović; Kovčica, CN89, A. Simović; v. Kijanovići, potok Jasikovac, CN89, R. Ajtić; Mokra Gora Mt., Bandera, DN54, DNA project; Čkalja, DN64, R. Ajtić; Pogled, DN44, R. Ajtić; Ponor, DN54, DNA project; Strašnik, Crvene vode, DN54, DNA project; Ozren Mt., v. Bare, DN07, A. Simović; v. Caričina, DN08, I. Krizmanić; Pešter Plateau, airport, DN29, M. Kalezić; Đalovića Klisura gorge, DN16, R. Ajtić; r. Boroštica, DN27, R. Ajtić; Sjenica, DN19, DN29, G. Pasuljević; Trojan, DN37, R. Ajtić; v. Boljare, DN16, R. Ajtić; v. Doliće, DN27, R. Ajtić; v. Gurdijelje, DN47, M. Kalezić; v. Karajukića Bunari, DN27, R. Ajtić; v. Mašoviće, Donje Gonje, DN19, A. Simović; v. Ponorac, Lemiša gaj, DP20, G. Džukić; v. Štavalj, DN29, R. Ajtić; v. Ugao, DN26, R. Ajtić; Srem: Fruška Gora Mt., Crveni Čot, CR90, I. Krizmanić; Irig, Monastery Staro Hopovo, DQ19, I. Krizmanić; Iriški venac, DQ09, DR00, I. Krizmanić; Sremska Kamenica, Paragovo, DR00, I. Krizmanić; v. Čerević, CR90, I. Krizmanić; v. Čortanovci, DR20, I. Krizmanić; v. Grgeteg, Monastery Velika Remeta, DR10, I. Krizmanić; Novi Sad, Petrovaradin, fortress, DR11, I. Krizmanić; Petrovaradinski rit, DR10, DR11, I. Krizmanić; Pećinci, v. Donji Tovarnik, DQ16, S. Đorđević; v. Obrež, Obedska bara, DQ15, M. Andjelković; Sremska Mitrovica, town, CQ98, I. Krizmanić; v. Grgurevci, CQ99, I. Krizmanić; Sremski Karlovci, Zanoš, DR10, A. Simović; Surčin, v. Boljevci, Crni Lug, DQ35, A. Simović; v. Progar, Bojčinska šuma, DQ35, A. Simović; western Serbia: Čačak, v. Miokovci, DP36, DP46, I. Krizmanić; Čemerno Mt., Borošnica, DP53, A. Golubović; peak, DP52, S. Đorđević; Tolišnica, DP53, A. Golubović; Mokra gora Mt., Ivički Oglavak, CP85, A. Simović; Mučanj Mt., v. Ravna Gora, Glog, DP22, G. Džukić; Tara Mt., Kaluđerske Bare, CP86, M. Kalezić; Ljuto Polje, Karajića bara, CP66, D. Jović; Mitrovac, Crveni potok, CP76, M. Kalezić; v. Šljivovica, Sređ, CP86, D. Jović; Đubića bara, CP75, M. Kalezić; Užice, Stari Grad, DP05, I. Krizmanić; Zlatibor Mt., Borova Glava, CP93, CP94, A. Simović; Partizanske Vode, Vodice, CP93, A. Simović; v. Ribnica, Ribničko Jezero Lake, CP93, A. Simović; Zvijezda Mt., Predov Krst, CP66, Lj. Tomović

### *Lacerta viridis*

Bačka: Apatin, Kurjačica, CR45, I. Krizmanić; Bačka Palanka, Gaja Mandra, CR71, NHMW; Sombor, v. Bački Monoštor, Kozara, CR37, I. Krizmanić; v. Bezdan, Baračka, CR37, CR38, I. Krizmanić; Subotica, Radanovac, CS91, I. Krizmanić; v. Bački Vinogradi, Seleven, DS10, DS11, I. Krizmanić; Subotička Peščara Sand, Bukvać, CS91, I. Krizmanić; Hrastovača, CS91, I. Krizmanić; Majdan, CS80, CS81, I. Krizmanić; Titelski Breg Hill, v. Mošorin, Titelska kosa, DR31, G. Džukić; Banat: Alibunar, v. Dobrica, Vasinska bara, DR80, M. Krstić; Bela Crkva, v. Banatska

Subotica, EQ28, M. Krstić; v. Crvena Crkva, Dolić, EQ27, A. Urošević; Crnovački potok - valley, EQ27, M. Kalezić; v. Češko Selo, EQ27, A. Urošević; v. Kaluđerovo, Jaz, EQ37, G. Džukić; Golo Brdo, EQ47, M. Krstić; v. Kusić, Ševac, EQ36, M. Krstić; Beograd, Palilula, Zatonja pond, DQ47, DQ48, R. Ajtić; Crvenka, DQ56, DQ57, R. Ajtić; Deliblatska Peščara Sand, Heronje, EQ06, I. Krizmanić; Korn, EQ07, I. Krizmanić; Kremenjak, EQ16, I. Krizmanić; Široke Torine, EQ06, I. Krizmanić; Utrine, EQ26, G. Džukić; v. Banatska Palanka, Stevanove ravnice, EQ26, I. Krizmanić; v. Deliblato, Mali Dos, EQ06, I. Krizmanić; v. Dubovac, Dragičev Hat, EQ16, M. Krstić; v. Dupljaja, EQ27, G. Džukić; v. Gaj, Crna Bara pond, EQ05, DQ95, A. Urošević; v. Grebenac, Dumača, EQ17, M. Krstić; v. Jasenov, EQ27, M. Krstić; v. Kajtasovo, EQ26, EQ27, M. Kalezić; v. Mramorak, DQ97, EQ06, M. Kalezić; v. Orešac, Židovar, EQ27, M. Krstić; v. Šumarak, Majur bara, EQ16, A. Urošević; Hatarice, EQ16, I. Krizmanić; Ružino polje, EQ16, M. Kalezić; v. Šušara, Brandibul, EQ07, I. Krizmanić; Crni vrh, EQ07, I. Krizmanić; Flamunda, EQ07, I. Krizmanić; Rošijana, EQ07, I. Krizmanić; Šušarski pašnjaci, EQ07, EQ17, I. Krizmanić; Lipar, EQ07, EQ17, I. Krizmanić; v. Vračev Gaj, r. Nera, EQ26, M. Krstić; v. Zagajica, Zagajička brda, EQ17, A. Urošević; Velika Pustara, EQ07, EQ17, I. Krizmanić; Volovska paša, DQ97, DQ98, I. Krizmanić; Kovin, Kovin bridge, DQ94, DQ95, A. Urošević; Pančevo, v. Banatski Brestovac, Ponjavica pond, DQ85, DNA project; v. Bavanište, DQ86, G. Džukić; Vojlovica, DQ76, NHMW; Vršac, r. Sočica, Fizeš spring, EQ39, I. Krizmanić; v. Malo Središte, EQ39, I. Krizmanić; v. Markovac, Puževo brdo, ER30, I. Krizmanić; Ogašu Mikuluj, EQ39, I. Krizmanić; v. Mesić, Mesički potok spring, EQ39, M. Kalezić; Dumbava, EQ39, M. Kalezić; Vršacki Breg Mt., Gojkov Park, EQ29, M. Krstić; Gudurički vrh, EQ39, A. Simović; Lisičja Glava, EQ29, M. Krstić; Široko Bilo, Vršacka kula, EQ29, I. Krizmanić; Vršacka Glavica, EQ29, M. Krstić; Zrenjanin, v. Ečka, Carska Bara pond, DR51, A. Simović; Central Serbia: Bojnik, v. Đinđuša, EN66, S. Antić; v. Pridvorica, EN66, I. Krizmanić; Čeljsko Jezero Lake, v. Čelije, EP10, Rufford project; Goč Mt., v. Bzenice, Mitrovo Polje, DP91, N. Labus; Jastrebac Mt., Mali Jastrebac, Bačevište, EP50, G. Džukić; Kraljevo, v. Vrdila, DP63, N. Labus; Kruševac, EP22, G. Pasuljević; v. Kukljin, EP12, Rufford project; v. Veliki Kupci, EP11, Rufford project; Leskovac, EN76, N. Labus; v. Belanovce, Zajčevo, EN66, S. Antić; v. Bogojevce, r. Veternica, EN76, D. Jović; v. Donje Brijanje, EN67, Rufford project; v. Kutleš, EN77, Rufford project; Mojsinjske Planine Mts., v. Trubarevo, EP32, R. Ajtić; Prokuplje, EN48, G. Pasuljević; v. Bresničić, EN38, D. Jović; v. Gubetin, r. Duboki potok, EN48, I. Krizmanić; v. Viča, Ložde Hill, EN38, Lj. Tomović; r. Ibar - valley, Maglič Grad, DP62, A. Simović; Raška, v. Rvati, DN79, N. Labus; Sokolovica Mt., v. Bresnik, EN37, I. Krizmanić; v. Prolom, EN36, G. Pasuljević; Stolovi Mt., Čiker, DP62, S. Đorđević; Lipar, DP73, A. Simović; Eastern Serbia: Babušnica, v. Draginac, FN16, G. Džukić; v. Modra Stena, FN06, G. Džukić; v. Raljin, FN26, Rufford project; Bela Palanka, town, Banjica, FN08, G. Džukić; v. Čiflik, FN18, D. Jović; Bukovik, v. Jošanica, Banja Jošanica, EP64, Rufford project; Devica Mt., r. Moravica - canyon, Lepterijska, EP73, A. Urošević; Soko Grad, EP73, A. Urošević; Dimitrovgrad, surrounding, FN46, Rufford project; v. Gojin Dol, FN36, Rufford project; v. Verzar, Mahala Melinje, FN45, Lj. Tomović; v. Vojnegovac, FN37, G. Džukić; v. Željuša, FN46, Rufford project; Doljevac, v. Malošište, EN78, Rufford project; Gramada Mt., v. Slivnica, FN45, Rufford project; Greben Planina Mt., v. Poganovo, Monastery Poganovo, FN36, G. Džukić; Leskovac, v. Donja Lokošnica, EN77, DNA project; Niš, Berčinac, EP60, Lj. Tomović; Jelašnička Klisura gorge, v. Jelašnica, EN89, D. Jović; Radovanski Kamen, EN89, Lj. Tomović; Pantelej, Church Sv. Pantelejmon, EN89, V. Žikić; town, Markovo Kale, EN79, Lj. Tomović; v. Lalinske Pojate, Lalinačka slatina, EN69, Lj. Tomović; v. Miljkovac, r. Toponička, EP60, EP70, I. Krizmanić; Ozren Mt., r. Gradašnica, Ripaljka, EP63, A. Urošević; surrounding, EP73, A. Urošević; v. Poružnica, EP63, Rufford project; Pirot, r. Jerma - gorge, FN35, I. Krizmanić; v. Krupac, Krupačko blato, FN37, D. Jović; v. Srečkovac, FN36, Rufford project; v. Vlasi, FN36, A. Urošević; Seličevica Mt., v. Donje Vlase, EN78, Rufford project; Sičevačka Klisura Gorge, v. Crvena Reka, Razluci, EN99, FN09, G. Džukić; v. Crveni Breg, EN99, G. Džukić; v. Ostrovica, Banjica, EN99, D. Jović; Carski drum, EN99, G. Džukić; v. Sičevo, EN89, V. Žikić; Carski drum, EN88, D. Jović; Soko Banja, Bovansko Jezero Lake, EP53, Rufford project; Popovica Hill, EP73, A. Urošević; town, EP73, A. Urošević; v. Nikolinac, EP73, Rufford project; Stara Planina Mt., r. Crnovrška reka, FP20, I. Krizmanić; r. Temštica - gorge, FN28, FN39, A. Simović; Stražište, FN39, I. Krizmanić; v. Dojkinci, FN48, A. Simović; v. Gostuša, FN39, A. Simović; v. Koprivštica, FN38, A. Simović; v. Oreovica, FN28, A. Simović; v. Pokrevenik, FN39, A. Simović; v. Ragodeš, FN29, A. Simović; v. Rosomač, Jelak, FN58, I. Krizmanić; v. Rsovci, FN48, A. Simović; v. Rudinje, FN29, A. Simović; v. Temska, FN28, FN29, G. Džukić; v. Topli Do, FN49, A. Simović; v. Visočka Ržana, FN47, I. Krizmanić; v. Vrtovac, Zlatarica pond, FP10, D. Jović; v. Zaskovci, FN39, A. Simović; Vikalište, FN39, A. Simović; Zavojsko Jezero Lake, v. Zavoj, FN39, I. Krizmanić; r. Visočica, FN39, I. Krizmanić; r. Visočica - gorge, FN48, I. Krizmanić; v. Pakleštica, FN38, FN48, I. Krizmanić; Stol Mt., v. Berovica, Berovičko Jezero Lake, FN26, D. Jović; v. Prisjan, FN27, G. Džukić; v. Strelac, FN26, G. Džukić; Suva Planina Mt., Gadžin Han, EN88, Lj. Tomović; Ploče, EN99, D. Jović; r. Lužnica - gorge, FN06, I. Krizmanić; v. Bežište, FN07, G. Džukić; v. Čukljenik, EN89, D. Jović; v. Gornji Prisjan, EN96, Rufford project; v. Grnčar, FN06, FN16, I. Krizmanić; v. Krastavče, EN88, Lj. Tomović; v. Ljuberađa, FN16, Rufford project; v. Malo Bonjinice, FN06, Rufford project; v. Mokra, FN08, G. Džukić; v. Sopotnica, EN97, I. Krizmanić; v. Veliki Krčimir, EN97, Rufford project; Svrlijig, town, EP90, I. Krizmanić; Svrlijske Planine Mts., v. Gulijan, FP00, I. Krizmanić; v. Izvor, EP90, I. Krizmanić; Vidlič Mt., FN47, I. Krizmanić; Vlaška Planina Mt., r. Jerma - gorge, Zvonačka Banja, FN35, Rufford project; Zli Do, FN35, I. Krizmanić; v. Studena, FN25, G. Džukić; v. Trnski Odorovci, FN36, G. Džukić; Kosovo: Drenica Planina Mt., v. Banjica, r. Drenica, DN90, I. Krizmanić; Gnjilane, EN30, G. Pasuljević; v. Gornje Kusce, EN30, N. Labus; v. Poneš, EN30, N. Labus; v. Velekinice, EM39, RS Petnica; Kosovo Polje, town,

EN01, EN02, G. Pasuljević; v. Velika Slatina, EN01, G. Pasuljević; Kosovska Kamenica, v. Berivojce, EN41, G. Pasuljević; Leposavić, v. Ibarska Slatina, DN86, G. Pasuljević; v. Kijevčice, DN87, G. Pasuljević; v. Sočanica, DN86, G. Pasuljević; v. Zabrđe, DN87, G. Pasuljević; Lipljan, EN10, G. Pasuljević; Priština, EN12, G. Džukić; Grmija Hill, EN12, EN22, G. Pasuljević; v. Ajvalija, EN11, G. Pasuljević; v. Badovac, EN11, G. Pasuljević; v. Gračanica, EN11, G. Pasuljević; Rogozna Mt., v. Banjski Suvi Do, DN75, G. Pasuljević; v. Donje Varage, DN75, N. Labus; v. Grižani, DN76, G. Pasuljević; v. Junake, DN76, G. Pasuljević; v. Rudine, DN76, G. Pasuljević; v. Ugljare, DN75, N. Labus; Šar Planina Mt., Brezovica, v. Jažince, DM97, I. Krizmanić; Gradište, EM07, I. Krizmanić; Kodža Balkan Mt., r. Rusenica - gorge, DM88, I. Krizmanić; Ošljak, v. Gornje Selo, DM97, G. Pasuljević; v. Sredska, DM97, R. Ajtić; v. Sevce, DM97, I. Krizmanić; Sjenica, DM97, EM07, G. Pasuljević; Štrpce, v. Drajkovce, EM07, N. Labus; Uroševac, surroundings, EM19, G. Pasuljević; v. Gadimlje, EN10, G. Pasuljević; v. Tankosić, EM29, G. Pasuljević; Zvečan, v. Banjska Reka, DN85, G. Pasuljević; v. Bresnica, DN85, G. Pasuljević; v. Joševik, DN85, G. Pasuljević; v. Matica, Matica Krš Hill, DN85, N. Labus; v. Srbovac, DN85, G. Pasuljević; Metohija: Crnojleđa Planina Mt., v. Dulje, DM99, G. Pasuljević; Đakovica, v. Babaj Boks, DM49, G. Pasuljević; Istok, v. Gusar, DN63, G. Pasuljević; v. Osojane, DN62, G. Pasuljević; Klina, v. Volujak, DN61, G. Pasuljević; Koritnik Mt., v. Rapča, DM65, G. Pasuljević; Koznik Mt., r. Miruša, DN60, R. Ajtić; Orahovac, DM69, DM79, G. Pasuljević; Peć, DN42, G. Pasuljević; Prizren, r. Prizrenska Bistrica - gorge, Duvška Klisura gorge, Vrbički potok, DM87, R. Ajtić; Dušanov Grad, DM87, R. Ajtić; town, DM77, R. Ajtić; Kaljaja, DM77, R. Ajtić; v. Dojnice, DM87, R. Ajtić; v. Mamuša, DM78, R. Ajtić; v. Skorobište, DM87, R. Ajtić; v. Vrbičane, DM87, R. Ajtić; Prokletije Mts., Đeravica Mt., r. Erenik, DN30, I. Krizmanić; Krštoja, DN31, DN41, I. Krizmanić; Lazović, DN32, DN42, I. Krizmanić; r. Beli Drim - spring, Radevačka pećina cave, DN43, I. Krizmanić; r. Dečanska Bistrica, Manastir Visoki Dečani, DN31, I. Krizmanić; Rugovska Klisura gorge, Miliševski potok, DN32, I. Krizmanić; v. Belo Polje, Velika Kamenica, DN32, I. Krizmanić; Hajdučka česma, DN32, I. Krizmanić; Šar Planina Mt., Ošljak, v. Sredska, Krajići, DM86, R. Ajtić; North-eastern Serbia: Beljanica, r. Suvaja, EP58, R. Ajtić; Rečke, EP58, R. Ajtić; v. Krupaja, spring, EP49, R. Ajtić; v. Sladaja, r. Gorunjska, EP48, R. Ajtić; v. Strmosten, r. Resava - gorge, EP48, S. Đorđević; Valkaluci, r. Nekudovo, EP57, R. Ajtić; Boljevac, v. Lukovo, EP64, Rufford project; v. Mali Izvor, r. Radovanska, EP75, I. Krizmanić; v. Mirovo, EP75, Rufford project; v. Savinac, EP86, Rufford project; v. Valakonje, EP75, Rufford project; Bor, Stol Mt., EP99, I. Krizmanić; surroundings, EP97, Rufford project; v. Brestovac, Brestovačka Banja, EP87, Rufford project; v. Donja Bela Reka, EP98, Rufford project; v. Krivelj, Kornjetu Mare Hill, EP88, RS Petnica; Crni Vrh, Borsko Jezero Lake, EP78, Rufford project; Deli Jovan Mt., Crni Vrh, FP09, R. Ajtić; Kraku Mikuli, r. Leva reka, EQ90, R. Ajtić; Krstaničke Livade, EP99, R. Ajtić; v. Salaš, FP08, R. Ajtić; v. Sikole, r. Sikolska, FP09, R. Ajtić; Đerdapska Klisura Gorge, Dlboka, FQ04, I. Krizmanić; Golubac Fortress, EQ54, A. Urošević; Lepenski Vir, EQ83, I. Krizmanić; surroundings, EQ54, Rufford project; v. Brnjica, EQ64, Rufford project; v. Dobra, EQ64, EQ74, Rufford project; v. Golubinja, EQ92, G. Džukić; v. Mosna, EQ91, EQ92, Rufford project; Homoljske Planine Mts., v. Krepoljin, EQ40, R. Ajtić; v. Ždrelo, EQ40, R. Ajtić; Kladovo, FQ24, G. Džukić; Karataš, FQ24, M. Kalezić; v. Kladušnica, FQ24, R. Ajtić; v. Mala Vrbica, FQ23, R. Ajtić; v. Milutinovac, FQ23, M. Kalezić; v. Rečica, FQ23, M. Kalezić; v. Vajuga, FQ23, M. Kalezić; v. Velika Vrbica, FQ33, R. Ajtić; Kučajske Planine Mts., Čestobrodica, EP54, EP55, A. Simović; Magareći Vrh, EP56, R. Ajtić; r. Brezovica, EP66, R. Ajtić; r. Grza - gorge, Koliba, EP55, A. Simović; v. Izvor, Monastery Sveta Petka, EP45, A. Simović; Veliki kozji rog, EP56, A. Urošević; Veliko jezero, EP56, A. Urošević; v. Izvor, r. Grza, EP45, A. Urošević; v. Krivi Vir, EP55, Rufford project; v. Senjski Rudnik, Požare, EP47, I. Krizmanić; v. Sisevac, Ginov potok, EP46, I. Krizmanić; Monastery Sisevac, EP46, I. Krizmanić; Velika Papratna, EP56, I. Krizmanić; Majdanpek, v. Miloševa Kula, EQ90, Rufford project; v. Rudna Glava, Blizna, EQ81, Rufford project; Malinik Mt., r. Lazareva reka - canyon, Zlot, EP77, I. Krizmanić; v. Bogovina, r. Bogovinska, EP76, I. Krizmanić; v. Podgorac, r. Valja Mare, EP76, R. Ajtić; r. Valja Mika, EP76, R. Ajtić; v. Zlot, r. Valja de Mižlok, EP77, R. Ajtić; Miroč Mt., FQ03, S. Đorđević; Negotin, r. Vratna, FQ11, R. Ajtić; r. Zamna, FQ00, Rufford project; v. Braćevac, FP27, FP28, Rufford project; v. Jabukovac, r. Zamna, FQ11, M. Kalezić; v. Jabukovac, FQ00, Rufford project; v. Kobišnica, FP29, Rufford project; v. Mala Kamenica, FQ11, Rufford project; v. Miloševo, FQ20, Rufford project; v. Mokranje, r. Mokranjska, FP29, R. Ajtić; v. Plavna, FQ00, EQ90, Rufford project; r. Zamna - canyon, FQ11, M. Kalezić; v. Radujevac, FQ30, R. Ajtić; v. Rajac, FP28, Rufford project; v. Srbovo, FP29, R. Ajtić; v. Tamnič, FP18, Rufford project; v. Vratna, FQ01, Rufford project; Rtanj Mt., v. Krivi Vir, Monastery Lozica, EP64, Rufford project; v. Rtanj, EP74, Rufford project; Zaječar, v. Gamzigrad, Felix Romuliana, EP96, R. Ajtić; Gamzigradska Banja, EP96, Rufford project; v. Minićevo, FP03, M. Kalezić; v. Nikolićevo, EP96, Rufford project; v. Osnic, EP85, R. Ajtić; v. Rgotina, FP07, Rufford project; v. Zvezdan, EP96, Rufford project; Vrška Čuka Mt., FP05, FP15, R. Ajtić; Žagubica, r. Mlava, EP69, R. Ajtić; north-western Serbia: Bajina Bašta, v. Gvozdac, CP88, I. Krizmanić; Gučevo Mt., v. Tršić, CQ62, R. Ajtić; Jablanik Mt., v. Počuta, Bebića Luka, CP99, I. Krizmanić; v. Rovni, r. Jablanica, DP09, DQ00, I. Krizmanić; Loznica, Banja Koviljača, CQ53, R. Ajtić; v. Donja Badanja, CQ72, R. Ajtić; v. Donji Dobrić, CQ63, M. Vujošević; Ljubovija, r. Trešnjica - canyon, CP88, I. Krizmanić; v. Gornja Trešnjica, CP78, RS Petnica; Maljen Mt., Divčibare, r. Bukovska, DP18, I. Krizmanić; Medvednik Mt., r. Obnica, Babac Hill, CQ90, I. Krizmanić; Vukobrača, CP99, I. Krizmanić; Mionica, v. Paštrić, DP29, I. Krizmanić; Osečina, r. Jadar, CQ81, R. Ajtić; Povlen Mt., Debelo Brdo, CP98, I. Krizmanić; Pašina Ravan, CP98, I. Krizmanić; r. Gradac, Monastery Čelije, DP09, I. Krizmanić; v. Brezovice, DP09, RS Petnica; v. Donje Leskovice, DP09, A. Urošević; v. Zarožje, Spajići, CP98, I. Krizmanić; Sokolska Planina Mt., v. Sokolac, Soko Grad, CQ70, SHS; Srem: sKa Mitrovica, v. Zasavica, Zasavica pond,

CQ87, A. Simović; Valjevo, r. Gradac - canyon, Degurička pećina cave, DP19, A. Urošević; r. Kolubara, DQ10, I. Krizmanić; v. Joševa, DQ01, A. Urošević; v. Petnica, Rogljevići, DP19, I. Krizmanić; Vladimirci, v. Provo, DQ14, R. Ajtić; Pomoravlje: Batočina, v. Brzan, EP18, R. Ajtić; Čičevac, Stalać, EP33, R. Ajtić; Jagodina, v. Novo Lanište, Zmič, EP17, M. Slijepčević; Požarevac, Ljubičevo, Ljubičevski bridge, EQ03, EQ13, A. Urošević; Smederevo, town, Jugovo, DQ94, A. Urošević; v. Kulič, nasip, kod crpne stanice, EQ04, A. Urošević; v. Šalinac, Šalinački lug, EQ04, A. Urošević; v. Vučak, DQ93, A. Urošević; Veliko Gradište, Gradištanska Peščara Sand, EQ45, Lj. Tomović; r. Pek, EQ45, A. Urošević; Srebrno Jezero Lake, EQ35, A. Simović; surroundings, EQ45, G. Džukić; v. Kumane, EQ35, Rufford project; v. Ram, EQ25, A. Urošević; fortress, EQ26, A. Urošević; south-eastern Serbia: Besna Kobila Mt., v. Kriva Feja, EN91, N. Labus; Bosilegrad, r. Brankovačka reka, FM29, DNA project; r. Ljubatska reka, Mahala Klisura, FN10, DNA project; v. Donja Ljubata, FN00, DNA project; v. Mlekominci, kod groblja, FN20, DNA project; v. Rajčilovci, potok, FN20, DNA project; Crna Trava, v. Sastav Reka, Prijakov rid, FN15, G. Džukić; Čemernik Mt., FN03, G. Pasuljević; Goleš Mt., v. Donje Tlamino, FM19, DNA project; Grdelička Klisura Gorge, v. Dupljane, Momin Kamen, EN83, G. Džukić; v. Grdelica, EN84, D. Jović; v. Koračevac, EN94, G. Džukić; v. Predejane, EN94, G. Džukić; Karamanica Mt., FM18, DNA project; Milevska Planina Mt., v. Božica, FN10, G. Džukić; Miladinova Mahala, FN12, G. Džukić; Oblik Mt., v. Jovac, Jovačka jezera, Rusimovo Jezero Lake, EN82, D. Jović; Ostrozub Mt., v. Ruplje, EN94, M. Kalezić; r. Pčinja - gorge, Monastery Prohor Pčinjski, EM78, A. Simović; Rudina Planina Mt., v. Izvor, FN20, DNA project; v. Resen, r. Sušica - gorge, FN20, DNA project; Starac Mt., Budovija Hill, EM78, Rufford project; v. Jablanica, EM78, Lj. Tomović; v. Starac, EM78, DNA project; Surdulica, r. Jelašnica, EN92, G. Džukić; v. Jelašnica, EN92, G. Džukić; Široka Planina Mt., v. Donji Kozji Dol, EM98, Rufford project; Trgovište, r. Pčinja, EM89, G. Džukić; v. Brnjare, EM79, Rufford project; v. Donja Trnica, r. Crnovska - gorge, Vražji Kamen, EM89, G. Džukić; v. Donji Stajevac, EM99, Rufford project; v. Šaprance, EM89, Rufford project; v. Zladovce, EM99, Rufford project; Vlasina Plateau, v. Groznatovci, FN13, G. Džukić; v. Kalna, FN14, G. Džukić; v. Mlačište, FN03, G. Džukić; v. Preslap, FN14, G. Džukić; Vlasotince, v. Kruševica, EN95, G. Džukić; Southern Serbia: Bujanovac, v. Borovac, EM69, Lj. Tomović; v. Božinjevac, EM69, Rufford project; v. Levosoje, Geren Dvor, EM69, DNA project; v. Lučane, EN50, DNA project; Karadag Mt., v. Bujić, EM48, DNA project; v. Bujić, r. Pral Prit, EM58, G. Džukić; v. Cerevajka, put za selo, kod škole, EM48, DNA project; v. Ilince, put za selo, EM48, DNA project; v. Mađare, EM49, DNA project; v. Miratovac, EM57, DNA project; r. Suva Reka, EM58, DNA project; Kukavica Mt., v. Popovce, Krš, EN64, I. Krizmanić; Lebane, surrounding, EN65, Rufford project; v. Konjino, EN65, V. Žikić; Leskovac, Pašina Česma, EN75, S. Antić; v. Gorina, EN64, S. Antić; v. Miroševce, Umac Hill, EN64, Rufford project; v. Šainovac, EN75, Rufford project; v. Turekovac, EN75, S. Antić; Pljačkovica Mt., v. Golemo Selo, EN62, M. Andjelković; v. Vlase, Donja Mahala, EN72, I. Krizmanić; Preševo, v. Trnavska Reka, EM58, Lj. Tomović; Radan Mt., Petrova Gora, Šopot, EN45, I. Krizmanić; r. Pusta Reka, EN56, I. Krizmanić; v. Donji Gajtan, EN45, Rufford project; v. Đake, EN35, G. Pasuljević; v. Gornji Brestovac, r. Magaška reka, EN46, I. Krizmanić; v. Magaš, r. Magaška reka, EN56, I. Krizmanić; v. Prekopčelica, Caričin Grad, EN55, I. Krizmanić; v. Vujanovo, r. Vujanovačka, EN46, I. Krizmanić; Rujan Planina Mt., Jelenja Glava, EM68, DNA project; v. Biljača, Pržar Hill, EM68, G. Džukić; v. Slavujevac, EM67, Lj. Tomović; v. Strezovce, EM68, G. Džukić; v. Svinjište, antenna, EM68, I. Krizmanić; Starac Mt., v. Klenike, EM79, Rufford project; Vranje, Markovo Kale, EN71, G. Džukić; Pržar Hill, EN71, Rufford project; v. Barbarušince, Bulina Česma, EN80, G. Džukić; south-western Serbia: Gazivodsko Jezero Lake, v. Ribariće, r. Crna, DN55, R. Ajtić; Giljeva Mt., Jelenak, DN18, R. Ajtić; Jabuka Mt., r. Ratajska — gorge, Monastery Pustinja, CP80, A. Simović; v. Seljašnica, r. Seljašnica, CP80, R. Ajtić; Jadovnik Mt., r. Sopotnica, CN99, A. Simović; v. Milošev Do, Četanica, DN09, A. Simović; Kamena Gora Mt., v. Kijanovići, Jasikovac spring, CN89, R. Ajtić; Mokra Gora Mt., r. Ibar - gorge, Mehov Krš, DN45, DNA project; Nova Varoš, Sjeničko Jezero Lake, DP10, DP11, A. Simović; Ozren Mt., r. Dubočica - gorge, DN08, R. Ajtić; v. Gostun, CN98, A. Simović; Tičje Polje, DN08, R. Ajtić; v. Sopotnica, Crvene stene, CN99, R. Ajtić; Pešter Plateau, Đalovića Klisura gorge, DN17, A. Simović; Sjenica, town, DN19, DN29, A. Simović; v. Mašoviće, Donje Gonje, DN19, A. Simović; v. Sebečevo, DN57, G. Pasuljević; v. Ugao, DN26, R. Ajtić; Priboj, CP82, G. Pasuljević; Prijepolje, Jerinin Grad, CP90, R. Ajtić; r. Gračanica, CN99, R. Ajtić; r. Mataruška, CN89, R. Ajtić; r. Mileševka - canyon, Monastery Mileševa, CP90, A. Simović; v. Gojakovići, Petnja, CN88, R. Ajtić; v. Karoševina, CN89, A. Simović; v. Miljevići, CN99, A. Simović; v. Zavinograđe, CN98, R. Ajtić; Raška, v. Beoci, DN69, N. Labus; Rogozna Mt., Jeleč, DN66, G. Pasuljević; v. Rajetiće, Tovrljani, DN66, I. Krizmanić; Zlatar Mt., Hisardžik Hill, DP00, R. Ajtić; Srem: Beočin, v. Susek, CR90, I. Krizmanić; Fruška Gora Mt., Crveni Čot, CR90, I. Krizmanić; Irig, Monastery Staro Hopovo, DQ19, I. Krizmanić; Iriški venac, DQ09, DR00, I. Krizmanić; Sremska Kamenica, Paragovo, DR00, I. Krizmanić; Sremski Karlovci, Stražilovo, DR10, I. Krizmanić; Krstuševine, DR10, Lj. Tomović; v. Čerević, Testera, CR90, I. Krizmanić; v. Grgeteg, Monastery Velika Remeta, DR10, I. Krizmanić; Monastery Grgeteg, DQ19, Lj. Tomović; v. Neradin, DQ19, G. Džukić; v. Vrdnik, DQ09, A. Simović; Zmajevac, DR00, G. Džukić; Indija, v. Novi Slankamen, Podčenta, DQ49, G. Džukić; Novi Sad, Petrovaradin, fortress, DR11, I. Krizmanić; Pećinci, v. Donji Tovarnik, DQ16, S. Đorđević; v. Obrež, Obedska bara, hotel, DQ15, A. Simović; Matijevica, DQ15, DQ25, I. Krizmanić; Sremska Mitrovica, v. Bešenovo, CQ99, G. Džukić; v. Bosut, r. Bosut, CQ77, A. Simović; v. Grgurevci, CQ99, I. Krizmanić; Sremski Karlovci, Karlovački Vinogradi, DR20, A. Ivanović; Zanoš, DR10, A. Simović; Surčin, v. Bečmen, lakes, DQ35, A. Simović; Galovica canal, DQ45, A. Urošević; v. Boljevci, Crni Lug, DQ35, A. Simović; v. Progar, Bojčinska šuma, DQ35, A. Simović; Šumadija: Avala Mt., antenna, DQ64, A. Urošević; Čarapičev Brest, DQ64,

A. Simović; Motel, DQ64, A. Simović; peak, DQ64, A. Urošević; Trešnja, DQ63, A. Urošević; v. Beli Potok, DQ65, S. Đorđević; v. Ripanj, Šuplja stena, DQ64, A. Urošević; v. Zuce, DQ64, A. Simović; Beograd, Čukarica, Žarkovo, DQ55, A. Urošević; Umka, Lipik, DQ44, G. Džukić; Sremčica, Lipovička šuma, DQ54, R. Ajtić; Grocka, Zavojice, DQ74, A. Urošević; v. Vrčin, DQ64, M. Andjelković; Palilula, Višnjica, DQ66, A. Urošević; Rakovica, Resnik, Resničko Jezero Lake, DQ55, M. Andjelković; Miljkovačka šuma, DQ55, R. Ajtić; Savski Venac, Topčider, DQ55, R. Ajtić; Voždovac, Stepin Lug, DQ65, A. Urošević; Zvezdara, Stepin Lug, DQ65, M. Andjelković; Gornji Milanovac, Brđanska Klisura gorge, v. Brđani, DP56, Rufford project; v. Klatičevo, DP57, Rufford project; Jagodina, v. Slatina, EP06, Rufford project; Knić, v. Borač, DP66, Rufford project; v. Bumbarevo Brdo, DP76, Rufford project; Kosmaj Mt., Mali Kosmaj, Beli Kamen, DQ62, Lj. Tomović; Kragujevac, Šumarice, DP97, A. Simović; v. Donja Sabanta, Žeželj Hill, DP96, A. Simović; v. Dragobraća, DP86, Rufford project; v. Đuriselo, DP86, Rufford project; Lazarevac, v. Baroševac, DQ51, R. Ajtić; v. Barzilovica, DQ40, G. Džukić; v. Junkovac, r. Turija, DQ42, R. Ajtić; v. Mirosljci, DQ52, R. Ajtić; Obrenovac, Obrenovački zabran, DQ34, R. Ajtić; Rača, surrounding, DP99, Rufford project; Rekovac, v. Belušić, EP14, Rufford project; Rudnik Mt., Cvijićev vrh, DP68, R. Ajtić; Mali Šturac, DP68, I. Krizmanić; monument, DP68, RS Petnica; v. Blaznava, r. Jasenica, DP79, R. Ajtić; v. Gornja Crnuća, DP68, R. Ajtić; v. Jarmenovci, r. Jarmenovačka, DP69, R. Ajtić; v. Majdan, DP58, RS Petnica; v. Ramača, Ramački visovi, DP69, R. Ajtić; v. Rudnik, DP68, I. Krizmanić; v. Stragari, DP78, R. Ajtić; v. Svrakovci, DP67, R. Ajtić; v. Zagrađe, Ostrovica, DP59, R. Ajtić; Topola, v. Gornja Trnava, DP79, Rufford project; v. Jelenac, DQ70, A. Simović; Trstenik, v. Bogdanje, EP03, Rufford project; v. Grabovac, Grabovačko brdo, EP02, EP03, Rufford project; Jerinin grad, DP93, Rufford project; western Serbia: Čačak, Ovčar Banja, Branojevac, DP35, I. Krizmanić; v. Miokovci, DP36, DP46, I. Krizmanić; Čemerno Mt., Gornja Isposnica, DP51, A. Golubović; Gornji Milanovac, v. Beršići, DP47, Rufford project; Tara Mt., r. Mali Rzav, CP93, R. Ajtić; v. Šljivovica, CP86, I. Krizmanić; Zaovinsko Jezero Lake, CP75, R. Ajtić; Troglav Mt., Kulaj, DP53, A. Golubović; Užice, r. Đetinja - gorge, Rajski otoci, DP05, A. Simović; Stari Grad, DP05, A. Simović; v. Potočanje, DP15, A. Simović; v. Zabuče, DP05, A. Simović; Zlatibor Mt., Borova Glava, CP93, CP94, A. Simović; Partizanske Vode, CP94, G. Džukić; v. Ribnica, Čavlovac spring, CP93, I. Krizmanić

### *Podarcis erhardii*

Metohija: Prizren, town, Kaljaja, DM77, R. Ajtić; south-eastern Serbia: r. Pčinja - gorge, Prohor Pčinjski Monastery, EM78, A. Urošević; Starac Mt., Budovija Hill, EM78, A. Simović; summit, EM78, Lj. Tomović; v. Jablanica, EM78, A. Simović; v. Starac, Čivčije, EM78, A. Simović; Vukovija, EM78, G. Džukić; Široka Planina Mt., v. Donji Kozji Dol, EM98, Rufford project; Trgovište, r. Radovnica, EM89, G. Džukić; v. Donja Trnica, r. Crnovska - gorge, Vražji Kamen, EM89, G. Džukić; v. Šaprance, EM89, Rufford project; southern Serbia: Bujanovac, v. Levosoje, Geren Dvor, Čukarski breg, EM58, G. Džukić; Karadag Mt., v. Miratovac, EM57, DNA project; r. Suva Reka, EM58, DNA project; Rujan Planina Mt., Jelenja Glava, EM68, DNA project; v. Biljača, Pržar Hill, EM68, G. Džukić; v. Slavujevac, EM67, Lj. Tomović; v. Strezovce, Cavadarci, Tursko Groblje, EM68, G. Džukić; v. Svinjište, antenna, EM68, I. Krizmanić

### *Podarcis muralis*

Bačka: Apatin, town, CR45, I. Krizmanić; Bačka Topola, v. Zobnatica, CR97, I. Krizmanić; Bečej, v. Bačko Gradište, Klisa, DR24, I. Krizmanić; Kanjiža, v. Male Pijace, Kapetanski rit, DS10, I. Krizmanić; Ludoško Jezero Lake, v. Hajdukovo, DS00, I. Krizmanić; Odžaci, v. Ratkovo, CR63, I. Krizmanić; Paličko Jezero Lake, v. Palić, DS00, I. Krizmanić; Subotica, v. Bački Vinogradi, Seleven, DS10, DS11, I. Krizmanić; Banat: Bela Crkva, v. Crvena Crkva, Dolić, EQ27, M. Krstić; v. Kaluđerovo, Golo Brdo, EQ47, M. Krstić; Trešnjar, EQ47, M. Krstić; v. Kusić, Ševac, EQ36, M. Krstić; Beograd, Palilula, Borča, Sebeš canal, DQ66, M. Andjelković; Pančevački rit, DQ66, M. Andjelković; Zatonja pond, DQ47, DQ48, R. Ajtić; Crvenka, DQ56, DQ57, R. Ajtić; Deliblatska Peščara Sand, v. Banatska Palanka, EQ26, M. Krstić; v. Grebenac, EQ17, I. Krizmanić; Kovin, Čikaja, DQ95, M. Kalezić; Kovin bridge, DQ94, A. Urošević; Novi Bečej, surrounding, DR34, DNA project; town, DR35, I. Krizmanić; Pančevo, Jabučki Rit, DQ67, I. Krizmanić; town, DQ76, I. Krizmanić; Sečanj, v. Jaša Tomić, r. Tamiš, DR83, I. Krizmanić; Vršac, r. Sočica, Fizeš spring, EQ39, I. Krizmanić; v. Mali Žam, Livade, ER20, M. Krstić; v. Malo Središte, Orlovo Brdo, EQ39, M. Krstić; v. Markovac, EQ39, M. Krstić; v. Mesić, Kulmea, EQ39, M. Krstić; v. Veliko Središte, ER30, M. Krstić; Vršački Rit, EQ29, ER20, I. Krizmanić; Vršački Breg Mt., Đakov Vrh, EQ29, EQ39, M. Krstić; Gojkov Park, EQ29, M. Krstić; Gudurički vrh, EQ39, A. Simović; Kamenarica, EQ39, M. Krstić; Lisičja Glava, EQ29, M. Krstić; Mali Rit, EQ29, M. Krstić; Široko Bilo, Vršačka kula, EQ29, I. Krizmanić; Vršačka Glavica, EQ29, M. Krstić; Zrenjanin, v. Orlovat, DR61, I. Krizmanić; central Serbia: Aleksandrovac, v. Trnavci, Trnovačka čuka, EP00, G. Pasuljević; Bojnik, v. Đinđuša, EN66, S. Antić; Čeljijsko Jezero Lake, EP10, R. Ajtić; Goč Mt., v. Brezna, DP72, A. Simović; Jastrebac Mt., Mali Jastrebac, Obla Glava, EP40, G. Džukić; Kopaonik Mt., Jošanička Banja, DP70, DP80, I. Krizmanić; Kozje Stene, DN79, I. Krizmanić; Krmeljica, DN79, S. Đorđević; Metode, DN89, I. Krizmanić; v. Brzeće, r. Duboka reka, DN89, Lj. Tomović; v. Merčez, Gužvenički potok, EN08, I. Krizmanić; v. Semeteš, Semeteško jezero, DN79, I. Krizmanić; Kraljevo, Mataruška Banja, Lojanik, DP63, D. Jović; town, DP74, G. Pasuljević; Kruševac, v. Kukljin, EP12, Rufford project; Kuršumlja, v. Dankoviće, EN17, G. Pasuljević; v. Rača, EN26, G. Pasuljević; Leskovac, v.

Belanovce, EN66, S. Antić; Mojsinjske Planine Mts., v. Trubarevo, EP32, R. Ajtić; Pasjača Mt., Pasjački vrh, EN47, EN57, I. Krizmanić; Prokuplje, r. Toplica, EN48, I. Krizmanić; Velika Guba, EN48, I. Krizmanić; r. Ibar - valley, Maglič Grad, DP62, R. Ajtić; Sokolovica Mt., Prolom Banja, r. Prolomska, EN36, I. Krizmanić; v. Prolom, EN36, G. Pasuljević; v. Rudare, EN26, G. Džukić; Stolovi Mt., Lipar, DP73, A. Simović; v. Žiča, Monastery Žiča, DP73, S. Đorđević; Trstenik, v. Grabovac, Grabovačko brdo, EP02, A. Simović; Eastern Serbia: Babička Gora Mt., v. Golema Njiva, Monastery Sveta Bogorodica, EN87, D. Jović; Babušnica, v. Gorčinci, FN16, Rufford project; Bela Palanka, surrounding, FN08, I. Krizmanić; Bukovik Mt., v. Jošanica, Banja Jošanica, EP64, Rufford project; Devica Mt., r. Moravica - canyon, EP73, A. Urošević; Soko Grad, EP73, A. Urošević; Dimitrovgrad, surrounding, FN46, G. Pasuljević; v. Željuša, FN46, Rufford project; Niš, Berčinac, EP60, Lj. Tomović; Gorica Hill, EN79, Lj. Tomović; Jelašnička Klisura gorge, v. Jelašnica, EN89, D. Jović; Radovanski Kamen, EN89, Lj. Tomović; Niška Banja, Popovac, EN89, V. Žikić; Pantelej, Church Sv. Pantelejmon, EN89, V. Žikić; town, EN69, I. Krizmanić; fortress, EN79, EN89, V. Žikić; town, Markovo Kale, EN79, Lj. Tomović; v. Miljkovac, r. Toponička, EP60, EP70, I. Krizmanić; v. Popovac, EN69, V. Žikić; Ozren Mt., r. Gradašnica, Ripaljka, EP63, A. Urošević; Pirot, r. Jerma - gorge, FN35, I. Krizmanić; town, Kale fortress, FN27, G. Džukić; v. Berovica, Berovičko Jezero Lake, FN36, G. Džukić; v. Vlasi, FN35, FN36, M. Kalezić; Sićevačka Klisura Gorge, Pleš, EN99, I. Krizmanić; v. Crvena Reka, EN99, FN09, I. Krizmanić; v. Ostrovica, EN89, V. Žikić; Banjica, Ždrelo, EN99, Lj. Tomović; v. Sićevo, EN89, G. Džukić; Carski drum, EN88, D. Jović; Soko Banja, Popovica Hill, EP73, A. Urošević; r. Moravica, EP73, A. Urošević; Stara Planina Mt., Arbinje, FN49, A. Simović; Crni Vrh, FP20, I. Krizmanić; r. Temštica - gorge, FN28, FN39, A. Simović; v. Dojkinci, FN48, A. Simović; v. Gostuša, FN39, A. Simović; v. Kalna, FP10, I. Krizmanić; v. Koprivštica, FN38, A. Simović; v. Oreovica, FN28, A. Simović; v. Pokrevenik, FN39, A. Simović; v. Ragodeš, FN29, A. Simović; v. Rosomač, Jelak, FN58, I. Krizmanić; v. Rsoveci, FN48, A. Simović; v. Rudinje, FN29, A. Simović; v. Temska, FN29, A. Simović; v. Topli Do, r. Javorska reka, FN49, I. Krizmanić; v. Visočka Ržana, FN47, I. Krizmanić; v. Vrelo, FN48, G. Džukić; v. Zaskovci, FN39, A. Simović; Vikalište, FN39, A. Simović; Zavojsko Jezero Lake, FN38, A. Simović; v. Zavoje, FN39, I. Krizmanić; r. Visočica, FN39, I. Krizmanić; v. Pakleštica, FN48, I. Krizmanić; Stol Mt., v. Berovica, Berovičko Jezero Lake, FN26, D. Jović; v. Kamik, FN26, G. Džukić; Suva Planina Mt., r. Lužnica - gorge, FN06, I. Krizmanić; v. Donji Dušnik, EN87, EN88, G. Džukić; v. Grnčar, FN06, I. Krizmanić; v. Krastavče, EN88, Lj. Tomović; v. Ljuberada, r. Stolska reka, FN16, I. Krizmanić; v. Mokra, r. Mokranska, FN08, I. Krizmanić; v. Oreovac, FN08, G. Džukić; v. Sopotnica, EN97, I. Krizmanić; Svrlijig, town, EP90, I. Krizmanić; Svrlijske Planine Mts., v. Gulijan, FP00, I. Krizmanić; v. Izvor, EP90, I. Krizmanić; Vlaška Planina Mt., r. Jerma - gorge, Zvonačka Banja, FN35, Rufford project; Zli Do, FN35, I. Krizmanić; v. Zvonce, FN25, I. Krizmanić; Kosovo: Gnjilane, EN30, G. Pasuljević; v. Poneš, EN30, N. Labus; Kosovo Polje, EN01, EN02, G. Pasuljević; v. Kuzmin, EN01, G. Pasuljević; Kosovska Kamenica, v. Berivojce, EN41, G. Pasuljević; v. Boževce, EN41, G. Pasuljević; Leposavić, DN87, G. Pasuljević; v. Kijevčice, DN87, G. Pasuljević; v. Koporiće, DN87, G. Pasuljević; v. Sočanica, DN86, G. Pasuljević; v. Zabrđe, DN87, G. Pasuljević; Lipljan, v. Donja Gušterica, EN11, G. Pasuljević; Novo Brdo Hill, v. Jasenovik, EN31, G. Džukić; v. Prekovce, EN31, G. Džukić; Podujevo, v. Batlava, EN14, EN24, G. Pasuljević; Priština, EN12, EN22, G. Pasuljević; Grmija Hill, EN12, EN22, G. Pasuljević; v. Ajvalija, EN11, G. Pasuljević; v. Badovac, EN11, G. Pasuljević; v. Gračanica, Gračančko Jezero Lake, EN11, G. Pasuljević; v. Kojlovica, EN12, G. Pasuljević; v. Mramor, EN22, G. Pasuljević; Rogozna Mt., v. Banjski Sivi Do, DN75, G. Pasuljević; v. Grižani, DN76, G. Pasuljević; v. Junake, DN76, G. Pasuljević; v. Lučka Reka, DN75, G. Pasuljević; v. Oraovica, DN76, G. Pasuljević; v. Rudine, DN76, G. Pasuljević; Srbica, v. Lauša, DN83, I. Krizmanić; Šar Planina Mt., Brezovica, Gradište, EM07, I. Krizmanić; v. Jažince, DM97, I. Krizmanić; Kokošinje, r. Klisura, EM07, I. Krizmanić; Ošljak, v. Gornje Selo, DM97, G. Pasuljević; v. Sevce, DM97, G. Pasuljević; Piribeg, Stojkova kuća, EM06, G. Pasuljević; r. Lepenac - gorge, EM26, NHMW; Štrpce, EM07, I. Krizmanić; v. Drajkovce, EM07, G. Pasuljević; v. Gornje Nerodimlje, EM09, G. Pasuljević; v. Ižance, r. Ižanska, EM08, I. Krizmanić; Štimlje, town, EM09, G. Pasuljević; v. Petrovo, EM09, G. Pasuljević; Uroševac, v. Tankosić, EM29, G. Pasuljević; Vitina, v. Begunce, EM38, I. Krizmanić; v. Letnica, EM38, G. Pasuljević; Vučitrn, v. Samodreža, EN04, G. Pasuljević; Zvečan, DN85, G. Pasuljević; v. Banjska, DN85, G. Pasuljević; v. Banjska Reka, DN85, G. Pasuljević; v. Bresnica, DN85, G. Pasuljević; v. Korilje, DN85, N. Labus; v. Mali Zvečan, DN84, N. Labus; v. Srbovac, DN85, G. Pasuljević; Metohija: Crnoljeva Planina Mt., v. Dulje, DM99, G. Pasuljević; Đakovica, v. Babaj Boks, DM49, G. Pasuljević; Istok, DN52, DN53, G. Pasuljević; Monastery Gorioč, DN53, I. Krizmanić; v. Osojane, DN62, G. Pasuljević; Klina, v. Kijevo, DN71, G. Pasuljević; Koritnik Mt., v. Rapča, DM65, G. Pasuljević; Koznik Mt., r. Miruša - canyon, DN60, DN70, G. Džukić; Mokra Gora Mt., Mokra Planina Mt., Savina voda, DN64, I. Krizmanić; Orahovac, DM69, DM79, G. Pasuljević; Peć, town, DN42, G. Pasuljević; Prizren, r. Prizrenska Bistrica - gorge, Dušanov Grad, DM87, I. Krizmanić; Duvška klisura, Vrbički potok, DM87, R. Ajtić; town, Kaljaja, DM77, R. Ajtić; v. Dojnice, DM87, R. Ajtić; v. Mamuša, DM78, R. Ajtić; v. Skorobište, DM87, R. Ajtić; v. Vrbičane, DM87, R. Ajtić; v. Zjum, DM68, G. Pasuljević; v. Zrze, DM68, I. Krizmanić; Prokletije Mts., Đeravica Mt., r. Erenik, DN30, I. Krizmanić; Junička Planina Mt., v. Junik, DN30, I. Krizmanić; Košare, DN30, I. Krizmanić; v. Batuša, DN30, I. Krizmanić; Lazović, DN32, DN42, I. Krizmanić; r. Beli Drim - spring, Radevačka pećina cave, DN43, I. Krizmanić; r. Dečanska Bistrica - gorge, v. Belaje, DN31, G. Pasuljević; Rugovska Klisura gorge, DN22, DN32, I. Krizmanić; Pečka patrijaršija, DN32, I. Krizmanić; Miliševski potok, DN32, I. Krizmanić; Veliki Štupalj, DN32, I. Krizmanić; Mali Štupalj, DN32, I. Krizmanić; v. Belo Polje, Velika Kamenica, DN32, I. Krizmanić; v. Kruševac, DN41, G. Pasuljević; v. Ljevoša, DN32, G. Pasuljević; v.

Streoc, DN41, I. Krizmanić; Šar Planina Mt., Ošljak, v. Lokvica, DM86, G. Pasuljević; v. Jablanica, DM86, G. Pasuljević; v. Sredska, Krajići, DM86, R. Ajtić; North-eastern Serbia: Beljanica Mt., r. Suvaja, EP58, R. Ajtić; Rečke, EP58, R. Ajtić; v. Krupaja, Krupajsko vrelo, EP49, R. Ajtić; v. Sladaja, r. Gorunjska, EP48, R. Ajtić; v. Strmosten, r. Resava - gorge, EP48, S. Đorđević; Valkaluci, r. Nekudovo, EP57, R. Ajtić; Bor, v. Brestovac, Brestovačka Banja, EP87, Rufford project; v. Krivelj, Kornjetu Mare Hill, EP88, RS Petnica; r. Kriveljska, EP88, Research station Petnica; Veliki Krivelj, EP88, RS Petnica; Crni Vrh Mt., Borsko Jezero Lake, EP78, Rufford project; "Savača", EP88, I. Krizmanić; r. Beljevska, EP77, EP78, I. Krizmanić; Deli Jovan Mt., Crni Vrh, FP09, R. Ajtić; Kraku Mikuli, r. Leva reka, EQ90, R. Ajtić; Krstaničke Livade, EP99, R. Ajtić; v. Salaš, FP08, R. Ajtić; v. Sikole, r. Sikolska, FP09, R. Ajtić; Đerdapska Klisura Gorge, Golubac fortress, EQ54, A. Urošević; Kusi Rt, FQ03, I. Krizmanić; r. Dunav, FQ04, I. Krizmanić; surrounding, EQ54, Rufford project; Štrbac, Veliki Štrbac, Alibegov potok, FQ03, I. Krizmanić; v. Brnjica, EQ64, Rufford project; v. Golubinja, EQ92, G. Džukić; Homoljske Planine Mts., v. Krepoljin, EQ40, R. Ajtić; v. Ždrelo, EQ40, R. Ajtić; Kladovo, v. Kladušnica, FQ24, R. Ajtić; v. Mala Vrbica, FQ23, R. Ajtić; v. Velika Vrbica, FQ33, R. Ajtić; Kučaške Planine Mts., Čestobrodica, EP54, EP55, A. Simović; Magareći Vrh, Tekuća Bara, EP56, R. Ajtić; r. Brezovica, EP66, R. Ajtić; r. Grza - gorge, EP56, A. Simović; Koliba, EP55, A. Simović; v. Izvor, Sveta Petka Monastery, EP45, A. Simović; r. Mižlok - canyon, EP67, I. Krizmanić; v. Senjski Rudnik, Požare, EP47, I. Krizmanić; v. Sisevac, Sisevac Monastery, EP46, I. Krizmanić; Velika Papratna, EP56, I. Krizmanić; Majdanpek, v. Debeli Lug, r. Todorova reka, EQ71, M. Kalezić; Malinik Mt., r. Lazareva reka - canyon, Zlot, EP77, I. Krizmanić; v. Podgorac, EP76, R. Ajtić; r. Valja Mare, EP76, R. Ajtić; r. Valja Mika, EP76, R. Ajtić; v. Zlot, r. Valja de Mižlok, EP77, R. Ajtić; Miroč Mt., FQ03, S. Đorđević; Negotin, r. Vratna, Monastery Vratna, FQ01, R. Ajtić; r. Zamna, FQ00, Rufford project; v. Jabukovac, r. Zamna, FQ11, M. Kalezić; v. Mokranje, r. Mokranjska, FP29, R. Ajtić; v. Plavna, r. Zamna - canyon, FQ11, M. Kalezić; v. Radujevac, FQ30, R. Ajtić; v. Srbovo, FP29, R. Ajtić; Petrovac na Mlavi, Gornjačka Klisura gorge, EQ40, A. Urošević; Rtanj Mt., v. Krivi Vir, Monastery Lozica, EP64, Rufford project; Zaječar, v. Gamzigrad, Felix Romuliana, EP96, A. Urošević; v. Osnić, EP85, R. Ajtić; v. Zvezdan, EP96, Rufford project; Vrška Čuka Mt., FP05, FP15, R. Ajtić; Žagubica, r. Mlava, spring, EP69, I. Krizmanić; North-western Serbia: Gučevo Mt., v. Tršić, CQ62, R. Ajtić; Jablanik Mt., r. Jablanica, spring, CP99, I. Krizmanić; v. Počuta, Monastery Pustinja, CP99, I. Krizmanić; Bebića Luka, CP99, I. Krizmanić; v. Rovni, r. Jablanica, DP09, DQ00, I. Krizmanić; Jagodnja Mt., v. Crnča, Mačkov Kamen, CQ60, G. Džukić; Loznica, Banja Koviljača, CQ53, R. Ajtić; v. Donja Badanja, CQ72, R. Ajtić; v. Lešnica, CQ64, M. Vujošević; Ljubovija, r. Trešnjica - canyon, CP88, I. Krizmanić; v. Gornja Trešnjica, CP78, RS Petnica; Maljen Mt., Divčibare, r. Bela Kamenica, DP28, I. Krizmanić; Čalački potok, DP28, I. Krizmanić; Medvednik Mt., CP99, I. Krizmanić; r. Obnica, Babac Hill, CQ90, I. Krizmanić; v. Stave, r. Obnica, CQ90, I. Krizmanić; Mionica, v. Paštrić, DP29, I. Krizmanić; Osečina, r. Jadar, CQ81, R. Ajtić; Povlen Mt., Debelo Brdo, CP98, I. Krizmanić; r. Gradac, Monastery Čelije, DP09, I. Krizmanić; v. Donje Leskovice, DP09, A. Urošević; Valjevo, r. Gradac, DQ10, A. Urošević; r. Gradac - canyon, Degurička pećina cave, DP19, A. Urošević; r. Kolubara, DQ10, I. Krizmanić; r. Ribnica, DP29, RS Petnica; v. Bačevci, DP19, RS Petnica; v. Degurić, DP19, RS Petnica; v. Joševa, DQ01, A. Urošević; v. Petnica, r. Banja, DP19, I. Krizmanić; Pomoravlje: Batočina, v. Brzan, EP18, R. Ajtić; Čičevac, Stalać, EP33, R. Ajtić; Mojsinjske Planine Mts., v. Makrešane, Monastery Sveti Jovan, EP33, I. Krizmanić; Požarevac, Ljubićevo, Ljubićevski bridge, EQ13, A. Urošević; Smederevo, fortress, DQ94, A. Urošević; town, Jugovo, DQ94, A. Urošević; v. Kulić, EQ04, A. Urošević; v. Šalinac, Šalinački lug, EQ04, A. Urošević; Veliko Gradište, r. Pek, EQ45, A. Urošević; Srebrno Jezero Lake, Ostrovo, EQ35, A. Urošević; town, EQ45, A. Urošević; v. Ram, fortress, EQ26, A. Urošević; v. Tribrode, Hajdučka dolina, EQ45, Lj. Tomović; south-eastern Serbia: Besna Kobila Mt., v. Klisurica, EN91, DNA project; v. Korbevac, Rainska Mahala, EN81, G. Džukić; v. Kriva Feja, EN91, G. Džukić; v. Musulj , r. Crna reka, EN91, G. Džukić; near the mind, FN00, M. Kalezić; Bosilegrad, r. Brankovačka reka, FM29, DNA project; r. Ljubatska reka, Mahala Klisura, FN10, DNA project; v. Donja Ljubata, FN00, FN10, DNA project; v. Mlekominici, FN20, DNA project; v. Rajčilojci, FN20, DNA project; Dukat Planina Mt., v. Brankovci, FM29, M. Kalezić; v. Crnoštica, r. Golema reka, FN10, DNA project; v. Radovnica, r. Radovnica, FM09, G. Džukić; Goleš Mt., v. Donje Tlamino, FM19, DNA project; Grdelička Klisura Gorge, v. Dupljane, Momin Kamen, EN83, G. Džukić; v. Džep, EN83, G. Džukić; v. Predejane, r. Predejanska, EN94, G. Džukić; Karamanica Mt., FM18, DNA project; Milevska Planina Mt., v. Božica, FN11, G. Džukić; Miladinova Mahala, FN12, G. Džukić; Oblik Mt., v. Jovac, EN82, D. Jović; Ostrožub Mt., v. Gornji Orah, FN05, G. Džukić; v. Krpejce, EN94, S. Antić; v. Ruplje, Stojimirovo, Selište, EN94, G. Džukić; tresava Selište, FN04, M. Kalezić; r. Pčinja - gorge, Monastery Prohor Pčinjski, EM78, A. Simović; Rudina Planina Mt., v. Izvor, FN20, DNA project; v. Resen, r. Sušica - gorge, FN20, DNA project; Starac Mt., Budovija Hill, EM78, A. Simović; v. Jablanica, EM78, A. Simović; v. Starac, Čivčije, EM78, A. Simović; Surdulica, r. Jelašnica , EN92, G. Džukić; v. Alakince, EN92, M. Kalezić; v. Jelašnica, EN92, G. Džukić; v. Masurica, EN92, G. Džukić; Široka Planina Mt., v. Donji Kozji Dol, EM98, Rufford project; Trgovište, r. Radovnica, EM89, G. Džukić; surrounding, EM89, G. Džukić; v. Donja Trnica, r. Crnovska - gorge, Vražji Kamen, EM89, G. Džukić; v. Šajince, EM89, G. Džukić; Vlasina Plateau, v. Donja Lisina, FN11, DNA project; v. Gradska, Radivojini, FN14, G. Džukić; v. Kalna, Krivi Del, FN14, G. Džukić; v. Preslap, r. Preslapska reka, FN14, G. Džukić; Vlasotince, town, EN95, Lj. Tomović; Southern Serbia: Goljak Mt., v. Kapit, EN54, G. Pasuljević; v. Lipovica, EN53, I. Krizmanić; Karadag Mt., v. Bujić, EM48, DNA project; r. Pral Prit, EM58, G. Džukić; v. Cerevajka, EM48, DNA project; v. Ilince, EM48, DNA project; v. Mađare, EM49, DNA project; v. Miratovac, r. Suva Reka, EM58, DNA project; Lebane, surrounding, EN65,



Rufford project; v. Konjino, EN65, V. Žikić; v. Nova Topola, EN65, I. Krizmanić; Leskovac, Hisar, EN75, S. Antić; Pašina Česma, EN75, S. Antić; v. Miroševce, Umac Hill, EN64, Rufford project; v. Žabljanje, Leštari, EN74, D. Jović; Medveđa, town, EN44, G. Pasuljević; Pljačkovica Mt., v. Drenovac, EN72, M. Andjelković; v. Vlase, Donja Mahala, EN72, I. Krizmanić; Radan Mt., v. Brestovac, EN56, S. Antić; v. Donji Gajtan, EN45, Rufford project; v. Đake, EN35, G. Pasuljević; v. Magaš, r. Magaška reka, EN56, I. Krizmanić; v. Prekopčelica, Caričin Grad, EN55, I. Krizmanić; v. Vujanovo, r. Vujanovačka, EN46, I. Krizmanić; Rujan Planina Mt., v. Svinjište, antenna, EM68, I. Krizmanić; Vranje, Markovo Kale, EN71, G. Džukić; Sveti Ilija Hill, EN71, G. Džukić; v. Barbarušince, EN80, G. Džukić; South-western Serbia: Gazivodsko Jezero Lake, v. Ribariće, r. Crna, DN55, R. Ajtić; motel Ibarski Biser, DN45, DNA project; Giljeva Mt., Jelenak, DN18, R. Ajtić; v. Raždaginja, DN28, G. Pasuljević; v. Trijebine, DN18, I. Krizmanić; Golija Mt., v. Brusnik, DP40, A. Golubović; v. Dajići, DP40, A. Golubović; Jabuka Mt., r. Ratajska - gorge, Monastery Pustinja, CP80, A. Simović; v. Seljašnica, r. Seljašnica, CP80, R. Ajtić; Jadovnik Mt., Savin krš, CN99, A. Simović; v. Milošev Do, Prisoje, DN09, A. Simović; Kašanj, DN09, A. Simović; Četanka, DN09, A. Simović; Kamena Gora Mt., v. Kijanovići, Jasikovac, CN89, R. Ajtić; Mokra Gora Mt., r. Crna Reka - canyon, Monastery Crna Reka, DN55, DNA project; r. Ibar - gorge, Mehov Krš, DN45, DNA project; Nova Varoš, Sjeničko Jezero Lake, DP10, DP11, A. Simović; Novi Pazar, DN57, DN67, I. Krizmanić; Ozren Mt., r. Dubočica - gorge, DN08, R. Ajtić; v. Gostun, CN98, A. Simović; Tičje Polje, DN08, R. Ajtić; v. Bare, DN07, A. Simović; v. Sopotnica, Crvene stene, CN99, R. Ajtić; Pešter Plateau, Đalovića Klisura gorge, DN16, DN17, R. Ajtić; Monastery Sopoćani, DN47, R. Ajtić; r. Boroštica, DN27, R. Ajtić; r. Vapa, spring, DN19, I. Krizmanić; Sjenica, DN19, DN29, A. Simović; Trojan, DN37, R. Ajtić; v. Boljare, DN16, R. Ajtić; v. Doliće, DN27, R. Ajtić; v. Duga Poljana, DN38, G. Pasuljević; v. Gurdijelje, Hajerečica, DN47, M. Kalezić; v. Kamešnica, DN38, I. Krizmanić; v. Karajukića Bunari, Malo Lešće, DN27, I. Krizmanić; v. Mašoviće, Donje Gonje, DN19, A. Simović; v. Štavalj, DN29, R. Ajtić; v. Ugao, DN26, G. Pasuljević; Priboj, town, CP82, G. Pasuljević; Prijepolje, Jerinin Grad, CP90, R. Ajtić; r. Gračanica, CN99, R. Ajtić; r. Mataruška, CN89, R. Ajtić; r. Mileševka - canyon, Manastir Mileševa, CP90, A. Simović; v. Gojakovići, Petnja, CN88, R. Ajtić; v. Karoševina, CN89, A. Simović; v. Miljevići, CN99, A. Simović; v. Zavinograđe, CN98, R. Ajtić; Raška, town, DN69, G. Pasuljević; Rogozna Mt., Jeleč, DN66, G. Pasuljević; Zlatar Mt., Hisardžik Hill, DP00, R. Ajtić; Zlatarsko Jezero Lake, Kokin Brod, DP01, DP11, A. Simović; Srem: Bačka Palanka, v. Neštin, Velika Ada, CR70, CR71, I. Krizmanić; Beočin, v. Susek, CR90, I. Krizmanić; Fruška Gora Mt., Dom "Elektrovojdovina", DR10, I. Krizmanić; Irig, Monastery Staro Hopovo, DQ19, I. Krizmanić; Iriški venac, DQ09, DR00, I. Krizmanić; Osvlje, CR90, M. Kalezić; Popovica, Ledinačko jezero, DR00, I. Krizmanić; Sremska Kamenica, Paragovo, DR00, I. Krizmanić; v. Čortanovci, r. Dunav, DR20, I. Krizmanić; v. Grgeteg, Monastery Grgeteg, DQ19, Lj. Tomović; v. Vrdnik, Vrdnička kula, DQ09, A. Simović; Indija, v. Novi Karlovci, DQ39, G. Džukić; v. Novi Slankamen, Podčenta, DQ49, G. Džukić; Novi Sad, Petrovaradin, fortress, DR11, I. Krizmanić; Petrovaradinski rit, DR10, DR11, I. Krizmanić; Pećinci, v. Obrež, Obedska bara, hotel, DQ15, I. Krizmanić; Sremska Mitrovica, v. Grgurevci, CQ99, I. Krizmanić; Sremski Karlovci, Karlovački Vinogradi, DR20, A. Ivanović; Surčin, v. Boljevci, DQ35, A. Urošević; v. Progar, Bojčinska šuma, DQ35, R. Ajtić; Šumadija: Avala Mt., Crveni Breg, DQ64, A. Urošević; Čarapičev Brest, DQ64, A. Simović; Motel, DQ64, A. Simović; peak, DQ64, A. Simović; Sakinac, DQ64, A. Simović; Trešnja, DQ64, A. Urošević; v. Beli Potok, DQ65, S. Đorđević; v. Ripanj, Šuplja stena, DQ64, A. Urošević; v. Zuce, DQ64, A. Simović; Beograd, Ada Ciganlija, DQ55, DQ56, I. Krizmanić; Čukarica, Košutnjak, DQ55, K. Ljubisavljević; Sremčica, Lipovička šuma, DQ54, M. Vujošević; Grocka, Zavojske, DQ74, A. Urošević; Grocka, v. Vrčin, DQ64, M. Andjelković; Palilula, DQ65, K. Ljubisavljević; Višnjica, DQ66, A. Urošević; IBISS, DQ56, A. Urošević; Ada Huja, DQ66, K. Ljubisavljević; Rakovica, Resnik, Resničko Jezero Lake, DQ55, M. Andjelković; Miljakovac, DQ55, S. Đorđević; Savski Venac, Topčider, DQ55, R. Ajtić; Stari Grad, Kalemegdan, DQ56, K. Ljubisavljević; Veliko Ratno Ostrvo, DQ56, Lj. Tomović; Voždovac, Banjica, DQ55, M. Vujošević; Zvezdara, Stepin Lug, DQ65, M. Andjelković; Gornji Milanovac, surrounding, DP57, I. Krizmanić; Kosmaj Mt., Veliki Kosmaj, DQ62, Lj. Tomović; Kragujevac, Šumarice, DP97, A. Simović; v. Donja Sabanta, Žeželj Hill, DP96, A. Simović; Lajkovac, r. Kolubara, DQ31, I. Krizmanić; Lazarevac, v. Baroševac, DQ51, R. Ajtić; v. Junkovac, r. Turija, DQ42, R. Ajtić; v. Mirosaljci, DQ52, R. Ajtić; Obrenovac, Obrenovački zabran, DQ34, R. Ajtić; Rudnik Mt., Cvijićevo vrh, DP68, R. Ajtić; Majdan, Gradine, DP68, RS Petnica; v. Blaznava, r. Jasenica, DP79, R. Ajtić; v. Brezovica, DP58, I. Krizmanić; v. Gornja Crnuća, DP68, R. Ajtić; v. Jarmenovci, r. Jarmenovačka, DP69, R. Ajtić; v. Ramaća, Ramački visovi, DP69, R. Ajtić; v. Stragari, DP78, R. Ajtić; v. Svrčkovci, DP67, R. Ajtić; v. Zagrađe, DP58, DP59, I. Krizmanić; Topola, v. Jelenac, DQ70, A. Simović; Trstenik, v. Bogdanje, EP03, Rufford project; Trstenik, v. Grabovac, Jerinin Grad, DP93, A. Simović; Western Serbia: Čačak, v. Miokovci, DP36, DP46, I. Krizmanić; Čemerno Mt., Gornja Isposnica, DP51, A. Golubović; Tolišnica, DP53, A. Golubović; Gornji Milanovac, v. Beršići, DP47, Rufford project; Javor Mt., v. Kušići, DP21, Lj. Tomović; Kraljevo, r. Studenica, Monastery Studenica, DP61, M. Krstić; Mućanj Mt., v. Ravna Gora, Glog, DP22, G. Džukić; Tara Mt., Janjač, CP66, R. Ajtić; Ljuto Polje, CP66, M. Kalezić; r. Mali Rzav, CP93, R. Ajtić; v. Nova Vežanja, CP65, M. Kalezić; v. Zaovine, CP66, RS Petnica; Zaovinsko Jezero Lake, CP75, R. Ajtić; Zborište, Zmajevski potok, CP75, I. Krizmanić; Troglav Mt., Kulaj, DP53, A. Golubović; Užice, r. Đetinja - gorge, Rajski otoci, DP05, A. Simović; Stari Grad, DP05, A. Simović; v. Potočanje, DP15, A. Simović; v. Stapari, uz prugu, CP95, I. Krizmanić; v. Zabuče, Moja kuća, DP05, A. Simović; Zlatibor Mt., Borova Glava, CP93, CP94, A. Simović; r. Veliki Rzav - gorge, DP12, G. Džukić; v. Panjak, CP74, Lj. Tomović; v. Ribnica,

Ribničko Jezero Lake, CP93, A. Simović; Čavlovac spring, CP93, I. Krizmanić; Zvijezda Mt., Predov Krst, CP66, Lj. Tomović

### *Podarcis tauricus*

Bačka: Bačka Topola, v. Tomislavci, CR87, Lj. Tomović; Kanjiža, Gornje Primorje, r. Kereš, DR29, I. Krizmanić; Odžaci, v. Bački Brestovac, CR64, A. Simović; Subotica, v. Bački Vinogradi, Seleven, DS11, I. Krizmanić; v. Horgoš, Veliki pašnjak, DS11, DNA project; Subotička Peščara Sand, Majdan, CS80, I. Krizmanić; Vrbas, v. Bačko Dobro Polje, Čarnok, CR93, I. Krizmanić; Banat: Deliblatska Peščara Sand, v. Banatska Palanka, EQ26, G. Džukić; v. Deliblato, Velika voda, EQ06, I. Krizmanić; v. Dubovac, Dragičev Hat, EQ16, M. Krstić; v. Grebenac, EQ27, G. Džukić; Dumača, EQ17, M. Krstić; v. Kajtasovo, Mali Pesak, EQ27, G. Džukić; v. Šumarak, Majur bara, EQ16, A. Urošević; Hatarice, EQ06, A. Urošević; Ružino polje, EQ16, M. Kalezić; v. Šušara, EQ07, A. Urošević; v. Zagajica, Zagajička brda, EQ17, I. Krizmanić; Volovska paša, DQ97, DQ98, I. Krizmanić; Kovin, Kovin bridge, DQ94, DQ95, A. Urošević; Pančevo, Jabučki Rit, DQ67, I. Krizmanić; Vršac, Vršački Rit, EQ29, ER20, I. Krizmanić; Zrenjanin, v. Tomaševac, DR71, A. Simović; Central Serbia: Aleksandrovac, town, EP01, G. Pasuljević; r. Ibar - valley, Maglič Grad, DP62, A. Simović; Stolovi Mt., Čukar, DP62, R. Ajtić; Kosovo: Drenica Planina Mt., v. Banjica, r. Drenica, DN90, I. Krizmanić; Gnjilane, town, EN30, G. Pasuljević; v. Poneš, EN30, N. Labus; Kosovo Polje, v. Vragolija, EN01, G. Pasuljević; Kosovska Kamenica, v. Berivojce, Sv. Jovan, EN41, G. Pasuljević; v. Boževce, EN41, G. Pasuljević; Leposavić, v. Ibarska Slatina, DN86, G. Pasuljević; v. Kijevčice, DN87, G. Pasuljević; Novo Brdo Hill, v. Klobukar, EN31, G. Džukić; Priština, Grmija Hill, Butovački breg, EN12, EN22, I. Krizmanić; town, EN12, EN22, G. Pasuljević; Rogozna Mt., v. Banjski Suvi Do, DN75, G. Pasuljević; v. Grižani, DN76, G. Pasuljević; v. Jabuka, DN75, I. Krizmanić; v. Junake, DN76, G. Pasuljević; v. Rudine, DN76, G. Pasuljević; Šar Planina Mt., Brezovica, v. Jažince, DM97, I. Krizmanić; Zvečan, v. Banjska Reka, DN85, G. Pasuljević; v. Joševik, DN85, G. Pasuljević; v. Srbovac, DN85, G. Pasuljević; v. Valač, DN85, G. Pasuljević; Metohija: Crnoljeva Planina Mt., v. Mušutište, Monastery Sveta Troica, DM98, G. Džukić; v. Studenčane, DM88, G. Pasuljević; Đakovica, v. Babaj Boks, DM49, G. Pasuljević; Istok, town, DN52, DN53, G. Pasuljević; v. Osojane, DN62, G. Pasuljević; Klina, v. Kijevo, DN71, G. Pasuljević; v. Volujak, DN61, G. Pasuljević; Koznik Mt., r. Miruša, DN60, I. Krizmanić; Mokra Gora Mt., Mokra Planina Mt., Savina voda, DN64, I. Krizmanić; Orahovac, town, DM69, DM79, G. Pasuljević; Prizren, town, Kaljaja, DM77, R. Ajtić; v. Vrbnica, DM66, G. Pasuljević; v. Žur, DM66, G. Pasuljević; Prokletije Mts., Junička Planina Mt., v. Batuša, DN30, I. Krizmanić; Krštoja, DN31, DN41, I. Krizmanić; r. Beli Drim - spring, Radevačka pećina cave, DN43, I. Krizmanić; North-eastern Serbia: Đerdapska Klisura Gorge, v. Mosna, EQ91, Rufford project; Kladovo, town, FQ24, G. Džukić; v. Brza Palanka, Stara Brza, FQ12, K. Ljubisavljević; v. Kladušnica, FQ24, R. Ajtić; v. Mala Vrbica, FQ23, R. Ajtić; v. Velika Vrbica, FQ33, R. Ajtić; Negotin, v. Plavna, r. Zamna - canyon, FQ11, M. Kalezić; Mali Mikoč, FQ00, M. Vujošević; North-western Serbia: Mali Zvornik, town, CQ41, G. Pasuljević; South-eastern Serbia: r. Pčinja - gorge, Monastery Prohor Pčinjski, EM78, S. Đorđević; Starac Mt., Budovija Hill, EM78, Rufford project; v. Jablanica, EM78, A. Simović; v. Starac, EM78, A. Simović; v. Sveta Petka, EM79, G. Džukić; Trgovište, v. Donja Trnica, r. Crnovska - gorge, EM89, Lj. Tomović; Southern Serbia: Bujanovac, v. Lučane, EN50, DNA project; Karadag Mt., v. Miratovac, EM57, DNA project; r. Suva Reka, EM58, DNA project; Rujan Planina Mt., Jelenja Glava, EM68, DNA project; v. Biljača, Pržar Hill, EM68, G. Džukić; v. Slavujevac, EM67, Lj. Tomović; v. Strezovce, EM68, G. Džukić; Vranje, Pržar Hill, EN71, Rufford project; south-western Serbia: Gazivodsko Jezero Lake, Preslo, DN55, I. Krizmanić; Giljeva Mt., v. Raždaginja, DN28, G. Pasuljević; Novi Pazar, town, DN67, G. Pasuljević; Pešter Plateau, v. Gornja Jošanica, r. Jošanica, DN56, I. Krizmanić; v. Kamešnica, DN38, I. Krizmanić; Western Serbia: Kraljevo, r. Studenica, Monastery Studenica, DP61, M. Krstić

### *Zootoca vivipara*

Central Serbia: Kopaonik Mt., Jankove Bare, DN89, I. Krizmanić; Karaman, Ledenice, DN89, D. Jović; Mali Karaman, peak, DN89, A. Urošević; Pančičev Vrh, DN89, I. Krizmanić; Suvo Rudište, DN89, Lj. Tomović; Velika Gobelja, antena, DN89, I. Krizmanić; Eastern Serbia: Stara Planina Mt., Arbinje, FN49, A. Simović; Babin Zub, Žarkov dol, FP30, I. Krizmanić; Bratkova Strana, FN49, A. Simović; Kopren, FN49, Lj. Tomović; Šošina vunija, FN49, G. Džukić; Krvave bare, FN49, A. Simović; Midžor, FP30, A. Simović; Ponor, FN48, FN49, G. Džukić; Prilepski vrh, FP30, G. Džukić; Srebrna glava, FN57, A. Simović; Stražna Čuka, FN49, A. Simović; Šošina vunija - Kopren, FN49, D. Jović; Tri Čuke, FN49, A. Simović; Tri Kladenca, FN49, Lj. Tomović; v. Topli Do, FN49, I. Krizmanić; Velika Lukanja, FN49, G. Džukić; Vražja Glava, FP40, A. Simović; Žarkova Čuka, FP30, G. Džukić; Kosovo: Kopaonik Mt., Belo Brdo, DN88, I. Krizmanić; Neveske stolice, DN88, D. Jović; Šar Planina Mt., Durlav Potok, EM06, D. Jović; Jažinačka Jezera Lakes, Veliko jezero, DM96, I. Krizmanić; Gornje Šije, DM96, I. Krizmanić; Livadica, Livadičko Jezero Lake, EM07, I. Krizmanić; Ljuboten, EM07, EM17, NHMW; Pavlov Kamen, DM96, I. Krizmanić; Piribeg, EM06, EM07, G. Pasuljević; Stojkova kuća, EM06, I. Krizmanić; Štrpce, r. Kaluđerska, EM07, I. Krizmanić; Metohija: Prokletije Mts., Begova planina Mt., Mali Štupelj, DN32, I. Krizmanić; Bogičevica Mt., Babino polje, DN21, G. Pasuljević; Đeravica Mt., r. Erenik, DN20, DN30, G. Pasuljević; Nedžinat Mt., Veliko Nedžinatsko Jezero Lake, DN22, I. Krizmanić; Šar

Planina Mt., Čemerička Planina Mt., Čemerište, DM73, DM74, M. Kalezić; Kobilica Mt., r. Slapska reka - Kobilica peak, DM96, Lj. Tomović; Mala Vraca, Gornje Lukovo polje, DM73, DM74, M. Kalezić; Šutman, Veliko Šutmansko Jezero Lake, DM74, I. Krizmanić; Čemerničko Jezero Lake, DM73, I. Krizmanić; Šutmanska Jezera Lakes, DM74, M. Kalezić; Velibeg, DM73, I. Krizmanić; Gornje Velibeško Jezero Lake, DM73, M. Kalezić; Zlipotočka Planina Mt., DM74, M. Kalezić; South-eastern Serbia: Čemernik Mt., FN03, G. Pasuljević; South-western Serbia: Mokra Gora Mt., Čkalja, DN64, R. Ajtić; Pogled, DN44, R. Ajtić; Ponor, DN54, DNA project; Strašnik, Crvene vode, DN54, R. Ajtić; Western Serbia: Tara Mt., Mitrovac, Crveni Potok, CP76, I. Krizmanić; Zvijezda Mt., Batura, Mala Batura, CP66, I. Krizmanić

## Appendix II – previously published records

### *Algyroides nigropunctatus*

Metohija: Đakovica, v. Bistražin, gorge between v. Zrze and v. Bistražin, DM68, Džukić & Pasuljević, 1979; Prizren, v. Vrbnica, DM66, Džukić, 1970; r. Prizrenska Bistrica - gorge, DM87, Džukić & Pasuljević, 1979; Prokletije, r. Beli Drim - spring, Radavačka pećina cave, DN43, Džukić & Pasuljević, 1979

### *Darevskia praticola*

Banat: Vršac, v. Jablanka, EQ39, www.euroherp.com; Vršac, v. Malo Središte, toward Gudurički peak, EQ39, Džukić, 1974; Vršački Breg Mt., Široko Bilo, EQ29, Džukić, 1974; Široko Bilo, EQ29, Baley & Jablonski, 2006–2014; Central Serbia: Kopaonik Mt., Jošanička Banja, DP80, Crnobrnja & Rohalj, 1988; Savinac, DP81, Crnobrnja & Rohalj, 1988; Kosovo: Priština, Grmija Hill, EN12, Pasuljević & Džukić, 1979; Rogozna Mt., v. Grižani, DN76, Pasuljević & Džukić, 1979; North-eastern Serbia: Kladovo, v. Velesnica, FQ23, Ljubisavljević *et al.*, 2006; Miroč Mt., v. Petrovo Selo, near Tekija, FQ14, Radovanović, 1951; Negotin, v. Vratna, FQ11, Džukić, 1974; without precise locality, EQ92, Simović *et al.*, 2012a; Zaječar, FP06, Radovanović, 1964; Southern Serbia: Vranje, surrounding, EN71, Radovanović, 1964; Šumadija: Avala Mt., DQ64, Džukić, 1972; Radovanović, 1941; Šumadija: Čarapićev Brest, DQ64, Crnobrnja-Isailović *et al.*, 2012; near monument, DQ64, Baley & Jablonski, 2006–2014; Trešnja, DQ63, Ljubisavljević *et al.*, 2006; Crnobrnja-Isailović *et al.*, 2012; v. Beli Potok, DQ64, Baley & Jablonski, 2006–2014; v. Zuce, DQ64, Crnobrnja-Isailović *et al.*, 2012; Baley & Jablonski, 2006–2014; Beograd, Čukarica, Košutnjak, DQ55, Karaman, 1939; Džukić, 1972; Crnobrnja-Isailović *et al.*, 2012; Savski Venac, Topčider, DQ55, Münch, 1997; Crnobrnja-Isailović *et al.*, 2012; Stari Grad, Kalemegdan, DQ56, Münch, 1997; Voždovac, Banjica, DQ55, Crnobrnja-Isailović *et al.*, 2012; Jajinci, DQ55, Baley & Jablonski, 2006–2014; Kosmaj Mt., v. Nemenikuće, DQ62, www.euroherp.com; Western Serbia: Ovčar Mt., Ovčar Banja, surrounding, DP36, www.teraristika.org

### *Lacerta agilis*

Bačka: without precise locality, CR44, Perić & Stanković, 2005; without precise locality, CR46, Perić & Stanković, 2005; without precise locality, CR48, Simović *et al.*, 2012b; without precise locality, CR65, Simović *et al.*, 2012b; without precise locality, CR70, Simović *et al.*, 2012b; without precise locality, CR99, Simović *et al.*, 2012b; without precise locality, CS80, Simović *et al.*, 2012b; without precise locality, CS90, Simović *et al.*, 2012b; Banat: Bela Crkva, v. Kaluđerovo, EQ47, Marčetić, 1958; v. Kusić, EQ37, Marčetić, 1958; Beograd, Palilula, Krnjača, DQ56, Džukić, 1972; Palilula, Krnjača, DQ66, Crnobrnja-Isailović *et al.*, 2012; Deliblatska peščara Sand, v. Banatska Palanka, EQ26, Marčetić, 1958; v. Kajtasovo, Mali Pesak, EQ27, Marčetić, 1958; Deliblatska peščara Sand, v. Vračev Gaj, EQ26, Marčetić, 1958; Pančevo, DQ76, Baley & Jablonski, 2006–2014; Central Serbia: Kopaonik Mt., DN88, Radovanović, 1964; without precise locality, DN89, Simović *et al.*, 2012b; Eastern Serbia: Sićevačka Klisura Gorge, EN99, Jović *et al.*, 1997; without precise locality, EP73, Simović *et al.*, 2012b; Kosovo: Priština, surrounding, EN12, Münch, 1997; Metohija: Prizren, surrounding, DM77, Karaman, 1939; North-eastern Serbia: Đerdapska Klisura Gorge, FQ24, Jovanović, 1986; without precise locality, EP58, Simović *et al.*, 2012b; without precise locality, EP77, Simović *et al.*, 2012b; without precise locality, EP88, Simović *et al.*, 2012b; without precise locality, EQ92, Simović *et al.*, 2012b; North-western Serbia: without precise locality, CP89, Simović *et al.*, 2012b; without precise locality, CQ74, Simović *et al.*, 2012b; without precise locality, CQ77, Simović *et al.*, 2012b; Pomoravlje: without precise locality, EP38, Simović *et al.*, 2012b; South-eastern Serbia: Dukat Planina Mt., Crnook peak, FM19, Sterijovski, 2014; Goleš Mt., v. Žeravino, FM18, Sterijovski, 2014; Vardenik Mt., Veliki Strešer, FN02, Crnobrnja-Isailović *et al.*, 2015; South-western Serbia: Golija Mt., DN49, Radovanović, 1941; Srem: Fruška Gora Mt., Irig, Monastery Novo Hopovo, DQ09, Tadijan & Mikeš, 1984; Iriški venac, DR00, Tadijan & Mikeš, 1984; Popovica, DR00, Tadijan & Mikeš, 1984; v. Vrdnik, DR00, Baley & Jablonski, 2006–2014; Sremski Karlovci, Zanoš, DR10, Baley & Jablonski, 2006–2014; Surčin, v. Boljevci, DQ35, Baley & Jablonski, 2006–2014; without precise locality, CQ58, Simović *et al.*, 2012b; without precise locality, CQ88, Simović *et al.*, 2012b; without precise locality, CQ89, Simović *et al.*, 2012b; without precise locality, CQ97, Simović *et al.*, 2012b; without precise locality, DQ09, Simović *et al.*, 2012b; Šumadija: Bukulja Mt., DQ60, Džukić, 1972; without precise locality, DQ44, Simović *et al.*, 2012b; Western Serbia: Tara Planina Mt., CP76, Radovanović, 1964; Mitrovac, CP76, Džukić, 1972; Užice, Kadinjača, CP96, Baley & Jablonski, 2006–2014; without precise locality, CP74, Simović *et al.*, 2012b

### *Lacerta viridis*

Bačka: without precise locality, CR45, Perić & Stanković, 2005; without precise locality, CR46, Perić & Stanković, 2005; without precise locality, CR70, Simović *et al.*, 2012c; without precise locality, CS80, Simović *et al.*, 2012c;

Banat: Deliblatska peščara Sand, v. Deliblato, EQ06, Baley & Jablonski, 2006–2014; v. Dubovac, EQ15, Baley & Jablonski, 2006–2014; v. Grebenac, v. Grebenac - v. Deliblato, EQ17, Mehély, 1903; v. Grebenac, v. Šumarak - v. Grebenac, EQ17, Mehély, 1903; v. Kajtasovo, EQ16, Mehély, 1903; v. Šušara, EQ17, Ham *et al.*, 1981; v. Šušara, EQ07, Baley & Jablonski, 2006–2014; Kovin, v. Bavanište, Crna Bara, DQ95, Baley & Jablonski, 2006–2014; Vršački Breg Mt., EQ39, Bohme *et al.*, 2007; Široko Bilo, Vršačka kula, EQ29, Baley & Jablonski, 2006–2014; Central Serbia: Goč Mt., v. Kamenica, DP72, Džukić, 1972; Kuršumljija, v. Grabovnica, EN27, Baley & Jablonski, 2006–2014; v. Krčmare, EN27, Baley & Jablonski, 2006–2014; Leskovac, town, EN75, EN76, Bohme *et al.*, 2007; r. Ibar - valley, v. Baljevac, DP70, Bohme *et al.*, 2007; Vrnjačka Banja, DP92, Džukić, 1972; without precise locality, EN36, Simović *et al.*, 2012c; Eastern Serbia: Bela Palanka, r. Nišava - valley, FN08, Münch, 1997; Sićevačka Klisura Gorge, v. Dolac, r. Nišava - gorge, EN99, Münch, 1997; without precise locality, EP62, Simović *et al.*, 2012c; without precise locality, FN17, Simović *et al.*, 2012c; Kosovo: Priština, Grmija Hill, EN12, Pasuljević, 1976; surrounding, EN12, Münch, 1997; v. Sofalija, EN12, Münch, 1997; Metohija: Đakovica, v. Bistražin, gorge between v. Zrže and v. Bistražin, DM68, Džukić & Pasuljević, 1979; Orahovac, v. Dragobilje, DN70, Karaman, 1922; Peć, surrounding, DN42, Karaman, 1922; North-western Serbia: Povlen, v. Donje Leskovice, DP09, Baley & Jablonski, 2006–2014; without precise locality, CQ74, Simović *et al.*, 2012c; without precise locality, CQ83, Simović *et al.*, 2012c; without precise locality, CQ96, Simović *et al.*, 2012c; Pomoravlje: Čičevac, v. Braljina, r. Morava - valley, EP33, Münch, 1997; Smederevo, surrounding, DQ94, Karaman, 1948; South-eastern Serbia: Bosilegrad, v. Mlekominici, FN20, Sterijovski, 2014; v. Rajčilojci, FN20, Sterijovski, 2014; v. Ribarci, FM29, Sterijovski, 2014; Dukat Planina Mt., v. Buceljevo, FN20, Sterijovski, 2014; v. Rikačevo, FM19, Sterijovski, 2014; r. Pčinja - gorge, Monastery Prohor Pčinjski, EM78, Baley & Jablonski, 2006–2014; Rudina Planina Mt., v. Izvor, FN20, Sterijovski, 2014; v. Resen, FN20, Sterijovski, 2014; Starac Mt., summit, EM78, EM79, Crnobrnja-Isailović & Aleksić, 1999; Ristić *et al.*, 2006; Suva Planina Mt., v. Kruševica, EN96, Baley & Jablonski, 2006–2014; Trgovište, surrounding, EM89, Crnobrnja-Isailović & Aleksić, 1999; Vlasina Plateau, v. Donja Lisina, FN11, Sterijovski, 2014; v. Gornja Lisina, FN11, Sterijovski, 2014; Southern Serbia: Karadag Mt., v. Miratovac, EM58, Ralev *et al.*, 2013; Srem: Beograd, Zemun, Zmaj, DQ46, Baley & Jablonski, 2006–2014; Fruška Gora Mt., CR90, Karaman, 1921; Irig, Monastery Novo Hopovo, DQ09, Tadijan & Mikeš, 1984; v. Vrdnik, DR00, Baley & Jablonski, 2006–2014; Pećinci, v. Obrež, Obedska bara, DQ25, Baley & Jablonski, 2006–2014; Surčin, v. Progar, Bojčinska šuma, DQ35, Baley & Jablonski, 2006–2014; without precise locality, CQ89, Simović *et al.*, 2012c; without precise locality, DQ06, Simović *et al.*, 2012c; without precise locality, DQ08, Simović *et al.*, 2012c; without precise locality, DQ09, Simović *et al.*, 2012c; Šumadija: Avala Mt., DQ64, Džukić, 1972; near monument, DQ64, Baley & Jablonski, 2006–2014; peak, DQ64, Crnobrnja-Isailović *et al.*, 2012; Trešnja, DQ63, Crnobrnja-Isailović *et al.*, 2012; v. Beli Potok, DQ64, Baley & Jablonski, 2006–2014; v. Zuce, DQ64, Crnobrnja-Isailović *et al.*, 2012; Baley & Jablonski, 2006–2014; Beograd, Savski Venac, Topčider park, DQ55, Münch, 1997; Crnobrnja-Isailović *et al.*, 2012; Zvezdara, Zvezdarska šuma, DQ66, Crnobrnja-Isailović *et al.*, 2012; Bukulja Mt., r. Velika Bukulja, Lazinski potok, DQ50, Džukić, 1972; Kosmaj Mt., Monastery Pavlovac, DQ62, Baley & Jablonski, 2006–2014; v. Babe, DQ63, Baley & Jablonski, 2006–2014; Lazarevac, r. Peštan, DQ33, Crnobrnja-Isailović *et al.*, 2012; Western Serbia: without precise locality, CP74, Simović *et al.*, 2012c; without precise locality, CP76, Simović *et al.*, 2012c

### ***Podarcis erhardii***

Kosovo: Priština, surrounding, EN12, Radovanović, 1964; South-eastern Serbia: r. Pčinja - gorge, Monastery Prohor Pčinjski, EM78, Baley & Jablonski, 2006–2014; Starac Mt., summit, EM78, Crnobrnja-Isailović & Aleksić, 1999; Trgovište, surrounding, EM89, Džukić, 1980; Crnobrnja-Isailović & Aleksić, 1999; Southern Serbia: Vranje, surrounding, EN70, Radovanović, 1964

### ***Podarcis muralis***

Bačka: Apatin, CR45, Perić & Stanković, 2005; Staklara, CR45, Perić & Stanković, 2005; Novi Sad, Petrovaradin, fortress, DR11, Urošević *et al.*, 2015; town, DR01, Urošević *et al.*, 2015; Subotica, town, CS90, Urošević *et al.*, 2015; Banat: Bela Crkva, v. Banatska Palanka, Sapaja, EQ26, Urošević *et al.*, 2015; Beograd, Palilula, Krnjača, DQ66, Crnobrnja-Isailović *et al.*, 2012; Deliblatska peščara Sand, v. Deliblato, lake, EQ06, Urošević *et al.*, 2015; Kovin, Kovin bridge, DQ95, Urošević *et al.*, 2015; Kovin, Marina, DQ95, Urošević *et al.*, 2015; Zrenjanin, v. Melenci, DR44, Urošević *et al.*, 2015; v. Orlovat, DR61, Urošević *et al.*, 2015; v. Tomaševac, DR71, Urošević *et al.*, 2015; Central Serbia: Goč Mt., v. Kamenica, DP72, Džukić, 1972; Jastrebac Mt., EP30, Džukić, 1972; Kuršumljija, surrounding, EN27, Baley & Jablonski, 2006–2014; v. Grabovnica, EN27, Baley & Jablonski, 2006–2014; v. Krčmare, EN27, Baley & Jablonski, 2006–2014; Eastern Serbia: Bela Palanka, r. Nišava - valley, FN08, Münch, 1997; surrounding, FN08, Münch, 1997; Knjaževac, v. Lepena, EP93, Džukić, 1972; Niš, town, fortress, EN79, Münch, 1997; Sićevačka Klisura Gorge, v. Crvena Reka, railroad station Crvena Reka, FN09, Münch, 1997; v. Dolac, EN99, Münch, 1997; Svrljiške Planine Mts., FN09, Džukić, 1972; Vlaška Planina Mt., r. Jerma - gorge, Zvonačka Banja, FN35, Džukić, 1972; without precise locality, EN98, Simović *et al.*, 2012d; Kosovo: Priština, Grmija Hill, EN12, Pasuljević, 1976; r. Prištevka, EN02, Münch, 1997; Priština, surrounding, EN12, Münch, 1997; North-eastern Serbia: Đerdapska Klisura Gorge, v.

Dobra, Turski potok, EQ64, Džukić, 1972; EQ92, Džukić, 1972; FQ24, Jovanović, 1986; Miroč Mt., r. Kašajna, FQ14, Džukić, 1972; without precise locality, EQ83, Simović *et al.*, 2012d; North-western Serbia: Maljen Mt., Divčibare, DP18, Džukić, 1972; Sokolska Planina Mt., v. Sokolac, Monastery Sv. Nikolaj, CQ70, Baley & Jablonski, 2006–2014; Sremska Mitrovica, v. Zasavica, Zasavica pond, CQ87, Urošević *et al.*, 2015; without precise locality, CP89, Simović *et al.*, 2012d; without precise locality, CQ83, Simović *et al.*, 2012d; Pomoravlje: Čičevac, Stalać, Todor of Stalać tower, EP33, Münch, 1997; v. Braljina, r. Morava – valley, EP33, Münch, 1997; Smederevo, DQ94, Karaman, 1948; without precise locality, EP38, Simović *et al.*, 2012d; South-eastern Serbia: Bosilegrad, v. Mlekominici, FN20, Sterijovski, 2014; v. Rajčilovci, FN20, Sterijovski, 2014; v. Ribarci, FM29, Sterijovski, 2014; Dukat Planina Mt., v. Buceljevo, FN20, Sterijovski, 2014; v. Dukat, FM09, Sterijovski, 2014; v. Jarešnik, FM19, Sterijovski, 2014; v. Rikačevo, FM19, Sterijovski, 2014; Grdelička Klisura Gorge, v. Dupljane, EN83, Baley & Jablonski, 2006–2014; v. Grdelica, EN84, Baley & Jablonski, 2006–2014; Milevska Planina Mt., v. Božica, FN12, Sterijovski, 2014; v. Milevci, FN21, Sterijovski, 2014; Rudina Planina Mt., v. Izvor, FN20, Sterijovski, 2014; v. Resen, FN20, Sterijovski, 2014; Starac Mt., summit, EM78, Crnobrnja-Isailović & Aleksić, 1999; Suva Planina Mt., v. Kruševica, EN96, Baley & Jablonski, 2006–2014; Trgovište, surrounding, EM89, Crnobrnja-Isailović & Aleksić, 1999; Vlasina Plateau, v. Donja Lisina, FN11, Sterijovski, 2014; v. Gornja Lisina, FN11, Sterijovski, 2014; Southern Serbia: Karadag Mt., v. Miratovac, EM58, Ralev *et al.*, 2013; Radan Mt., v. Zebica, Đavolja varoš, EN36, Baley & Jablonski, 2006–2014; Srem: Beograd, Novi Beograd, Bežanija, DQ56, Pavletić, 1964; Blok 45, DQ45, Urošević *et al.*, 2015; Zemun, DQ56, Pavletić, 1964; Zmaj, DQ46, Baley & Jablonski, 2006–2014; Fruška Gora Mt., Iriški Venac, DR00, Baley & Jablonski, 2006–2014; Popovica, DR00, Tadijan & Mikeš, 1984; Sremski Karlovci, Stražilovo, DR10, Baley & Jablonski, 2006–2014; v. Vrdnik, DR00, Baley & Jablonski, 2006–2014; Pećinci, v. Obrež, Obedska bara, hotel, DQ15, Urošević *et al.*, 2015; road to Kupinovo, DQ25, Urošević *et al.*, 2015; Sremski Karlovci, Sremski Karlovci, Krstuševine, DR10, Urošević *et al.*, 2015; Zanoš, DR10, Urošević *et al.*, 2015; Surčin, v. Bečmen, lakes, DQ35, Urošević *et al.*, 2015; v. Boljevci, DQ35, Urošević *et al.*, 2015; Crni Lug, DQ35, Urošević *et al.*, 2015; v. Progar, Bojčinska šuma, DQ35, Urošević *et al.*, 2015; without precise locality, CQ88, Simović *et al.*, 2012d; without precise locality, CQ89, Simović *et al.*, 2012d; without precise locality, CQ97, Simović *et al.*, 2012d; without precise locality, CQ98, Simović *et al.*, 2012d; without precise locality, DQ09, Simović *et al.*, 2012d; Šumadija: Avala Mt., Čarapićev Brest, DQ64, Džukić, 1972; near monument, DQ64, Baley & Jablonski, 2006–2014; peak, DQ64, Crnobrnja-Isailović *et al.*, 2012; Trešnja, DQ63, Crnobrnja-Isailović *et al.*, 2012; Baley & Jablonski, 2006–2014; v. Beli Potok, DQ64, Baley & Jablonski, 2006–2014; v. Ripanj, DQ64, Baley & Jablonski, 2006–2014; v. Zuce, DQ64, Crnobrnja-Isailović *et al.*, 2012; Baley & Jablonski, 2006–2014; Beograd, DQ56, Džukić, 1972; Čukarica, Košutnjak, DQ55, Crnobrnja-Isailović *et al.*, 2012; Sremčica, DQ54, Crnobrnja-Isailović *et al.*, 2012; Grocka, DQ64, Crnobrnja-Isailović *et al.*, 2012; Palilula, Karaburma, DQ56, DQ66, Crnobrnja-Isailović *et al.*, 2012; Ada Huja, DQ66, Crnobrnja-Isailović *et al.*, 2012; Višnjica, DQ66, Crnobrnja-Isailović *et al.*, 2012; r. Dunav, mouth, DQ56, Münch, 1997; Savski Venac, Topčider, DQ55, Crnobrnja-Isailović *et al.*, 2012; Baley & Jablonski, 2006–2014; Topčidersko Brdo, DQ55, Crnobrnja-Isailović *et al.*, 2012; Savski Venac, Dedinje, DQ55, Crnobrnja-Isailović *et al.*, 2012; Stari Grad, Kalemegdan, DQ56, Kattinger, 1972; Crnobrnja-Isailović *et al.*, 2012; Zvezdara, DQ65, Crnobrnja-Isailović *et al.*, 2012; Kosmaj Mt., Monastery Pavlovac, DQ62, Baley & Jablonski, 2006–2014; Lazarevac, r. Peštan, DQ33, Crnobrnja-Isailović *et al.*, 2012; without precise locality, DQ44, Simović *et al.*, 2012d; Western Serbia: Tara Planina Mt., CP76, Džukić, 1972; Užice, DP05, Baley & Jablonski, 2006–2014

### ***Podarcis tauricus***

Bačka: Kanjiža, v. Male Pijace, DS10, Džukić, 1974; Novi Sad, surrounding, DR01, Mehély, 1903; Sombor, surrounding, CR56, Mehély, 1903; Subotica, surrounding, CS90, Mehély, 1903; v. Svetozar Miletić, CR67, Mehély, 1903; without precise locality, CR97, Szabados, 2010; without precise locality, CR65, Simović *et al.*, 2012e; without precise locality, DR22, Simović *et al.*, 2012e; Banat: Deliblatska peščara Sand, v. Deliblato, EQ06, Mehély, 1903; v. Grebenac, EQ17, Mehély, 1903; v. Mramorak, DQ96, Radovanović, 1951; v. Šušara, EQ17, Mehély, 1903; , Flamunda, EQ07, Mehély, 1903; Kovin, r. Dunav, DQ95, Baley & Jablonski, 2006–2014; Pančevo, surrounding, DQ76, Radovanović, 1964; without precise locality, DR60, Simović *et al.*, 2012e; Kosovo: Priština, surrounding, EN12, Radovanović, 1964; Metohija: Đakovica, surrounding, DM59, Radovanović, 1964; v. Bistražin, gorge between v. Zrze and v. Bistražin, DM68, Džukić & Pasuljević, 1979; Peć, surrounding, DN42, Radovanović, 1964; Prizren, surrounding, DM77, Radovanović, 1964; v. Vrbnica, DM66, Džukić, 1970, 1974; v. Zrze, Švanjski most, DM68, Karaman, 1939; North-eastern Serbia: Deli Jovan Mt., v. Trnjane, FP09, Radovanović, 1951; Negotin, v. Prahovo, Kusjak, FQ20, Radovanović, 1941; v. Radujevac, FQ30, Džukić, 1974; South-eastern Serbia: r. Pčinja - gorge, Monastery Prohor Pčinjski, EM78, Baley & Jablonski, 2006–2014; Starac Mt., summit, EM78, Crnobrnja-Isailović & Aleksić, 1999; Trgovište, surrounding, EM89, Džukić, 1980; Crnobrnja-Isailović & Aleksić, 1999; Southern Serbia: Karadag Mt., v. Miratovac, EM58, Ralev *et al.*, 2013; Vranje, surrounding, EN71, Mehély, 1903; Srem: Beograd, Novi Beograd, Bežanija, DQ56, Crnobrnja-Isailović *et al.*, 2012; Zemun, Bežanija, DQ56, Karaman, 1939; Western Serbia: Kraljevo, r. Studenica, Monastery Studenica, DP61, Radovanović, 1951

### ***Zootoca vivipara***

Central Serbia: Kopaonik Mt., Gobelja, DN89, Džukić, 1974; Eastern Serbia: Stara Planina Mt., Kopren, FN49, Džukić, 1972; Midžor, FP30, Ivančević *et al.*, 2007; Prilepski vrh, FP30, Ivančević *et al.*, 2007; Tri kladenca, FN49, Ivančević *et al.*, 2007; Tupanar, FP30, Ivančević *et al.*, 2007; Žarkova Čuka, FP30, Ivančević *et al.*, 2007; Metohija: Prokletije, Rugovska Klisura gorge, Boge, DN23, Džukić, 1972; Šar Planina Mt., Rudoka, DM74, DM75, Džukić, 1972; South-eastern Serbia: Vardenik Mt., northern slope, FN02, Crnobrnja-Isailović *et al.*, 2015; Veliki Strešer, FN02, Crnobrnja-Isailović *et al.*, 2015; South-western Serbia: Pešter, v. Duga Poljana, DN38, Karaman, 1921; Western Serbia: Tara Planina Mt., Mitrovac, Crveni Potok, CP76, Džukić, 1974; Zaovinsko Jezero Lake, r. Beli Rzav, CP75, Džukić, 1974

### References for the locality data:

(References already cited under “References” section were omitted)

- Baley, P. & Jablonski, D. (2006–2014) Balcanica.info. Available from: [www.balcanica.cz/](http://www.balcanica.cz/), (16.03.2014).
- Crnobrnja, J. & Rohalj, A. (1988) Prilog poznavanju herpetofaune Kopaonika. *Zbornik radova BID "Josif Pančić"*, 59–76.
- Crnobrnja-Isailović, J., Jelić, I., Stanislavljević, B. & Ćosić, N. (2012) *Vodozemci i gmizavci Beograda*. Ekološko društvo Endemit, Beograd, 117 p.
- Karaman, S. (1922) Beiträge zur Herpetologie von Mazedonien. *Glasnik Hrvatskog Prirodoslovnog društva*, 34, 1–22.
- Kattinger, E. (1972) Beiträge zur Reptilienkunde der südwestlichen Balkanhalbinsel. *Bericht der Naturforschenden Gesellschaft*, 47, 42–75.
- Münch, H. (1997) *Zoologische Beobachtungen Auf Dem Balkan von 1941–1945*. Naturhistorisches Museum, Rudolstadt (Supplementband 2 der Reihe "Rudolstädter naturhistorische Schriften"). 99 p.
- Pasuljević, G. (1976) Characteristics of habitat and factors determining distribution and activity of the species *Ablepharus kitaibelii* (Lacertilia, Scincidae). *Acta Biologica et Medica Experimentalis*, 1–2, 57–63.
- Pavletić, J. (1964) Amphibia i Reptilia zbirke Hrvatskog narodnog zoološkog muzeja u Zagrebu. *Hrvatski narodni zoološki muzej*, 4, 1–37.
- Perić, R. & Stanković, M. (2005) Prilog poznavanju faune vodozemaca i gmizavaca na teritoriji opštine Apatin. *Zbornik radova EcoIst '05*, 1, 43–47
- Ralev, A., Popović, M., Ružić, M., Shurulinkov, P., Daskalova, D., Spasov, L. & Crnobrnja-Isailović, J. (2013) A new record of *Testudo graeca iberica* Pallas, 1814, in southern Serbia. *Herpetozoa*, 25(3–4), 151–153.
- Simović, A., Stanković, M. & Mesaroš, G. (2012a) Podaci o rasprostranjenju vrste *Darevskia praticola* (Eversmann, 1834) u Srbiji. Portal za kartiranje biološke raznovrsnosti Srbije – BioRas. Available from: <http://www.bioras.petnica.rs/rasprostranjenost.php?id=184>, (07.11. 2014).
- Simović, A., Stanković, M. & Mesaroš, G. (2012b) Podaci o rasprostranjenju vrste *Lacerta agilis* (Linnaeus, 1758) u Srbiji. Portal za kartiranje biološke raznovrsnosti Srbije – BioRas. Available from: [www.bioras.petnica.rs/rasprostranjenost.php?id=185](http://www.bioras.petnica.rs/rasprostranjenost.php?id=185), (07.11.2014).
- Simović, A., Stanković, M. & Mesaroš, G. (2012c) Podaci o rasprostranjenju vrste *Lacerta viridis* (Laurenti, 1768) u Srbiji. Portal za kartiranje biološke raznovrsnosti Srbije – BioRas. Available from: <http://www.bioras.petnica.rs/rasprostranjenost.php?id=187>, ( 07.11. 2014).
- Simović, A., Stanković, M. & Mesaroš, G. (2012d) Podaci o rasprostranjenju vrste *Podarcis muralis* (Laurenti, 1768) u Srbiji. Portal za kartiranje biološke raznovrsnosti Srbije – BioRas. Available from: [www.bioras.petnica.rs/rasprostranjenost.php?id=188](http://www.bioras.petnica.rs/rasprostranjenost.php?id=188), (07.11.2014).
- Simović, A., Stanković, M. & Mesaroš, G. (2012e) Podaci o rasprostranjenju vrste *Podarcis tauricus* (Pallas, 1814) u Srbiji. Portal za kartiranje biološke raznovrsnosti Srbije – BioRas. Available from: [www.bioras.petnica.rs/rasprostranjenost.php?id=189](http://www.bioras.petnica.rs/rasprostranjenost.php?id=189), (07.11. 2014).
- Sterijovski, B. (2014) Systematic survey of amphibian and reptile fauna in the Bosilegrad region of southern Serbia. *Biologia Serbica*, 36, 65–68.
- Szabados, K. (2010) A Bácskai-lőszhátság völgyei. In: B.B. Muhi (Ed.), *Ismerd meg Vajdaság növény- és állatvilágát*. Árgus, Novi Sad. Available from: [www.nyeomszsz.org/orszavak/pdf/05\\_szabados\\_klara.pdf](http://www.nyeomszsz.org/orszavak/pdf/05_szabados_klara.pdf), (07.11.2014).
- Tadijan, Z. & Mikeš, M. (1984) Herpetološka osmatranja na Fruškoj Gori. *Zbornik studentskih radova, Institut za biologiju PMF Novi Sad*, 1984, 41–50.