

Meroles cuneirostris* (Strauch, 1867)*WEDGE-SNOUDED DESERT LIZARD**

Andrew A. Turner

Regional: Least Concern**Taxonomy:** No notable issues.

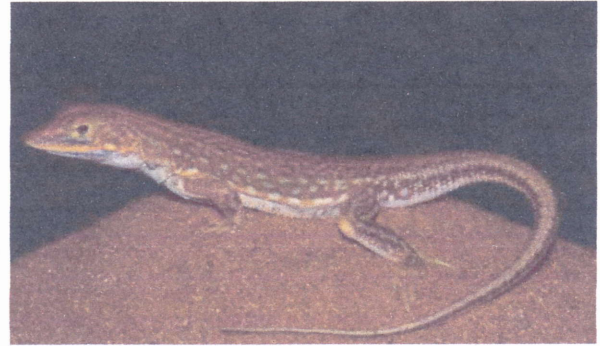
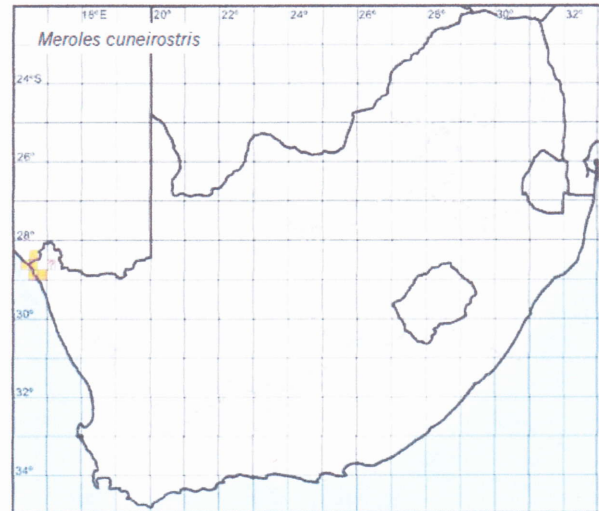
Distribution: Occurs throughout most of the southern Namib Desert of Namibia south of Walvis Bay, just entering South Africa along the sandy southern banks of the Orange River (Branch 1998). A QDGC record at the eastern edge of the range is considered questionable as it is not located in typical sandy habitat.

Habitat: Found in sparsely vegetated desert and on coastal dunes, especially those with loose sand (Branch 1998).

Bioregion: Southern Namib Desert; Namaqualand Sandveld.

Assessment rationale: Occurs peripherally in South Africa, where its distribution is restricted and EOO (109 km²) and AOO (94 km²) are below the Endangered thresholds. Local populations are threatened by land-use changes (agricultural activities on the banks of the Orange River have negatively impacted much of the loose, sandy habitat that this species requires; Bauer & Branch 2003 [2001]) and there is a continuing decline in area and quality of habitat [B1+2b(iii)], indicating Near Threatened status. However, immigration from outside the *Atlas* region is almost certain and therefore this regional assessment is downgraded to Least Concern.

Conservation measures: Survey suitable habitat south of the Orange River to assess the status of South African populations.

*Meroles cuneirostris*, adult—Sossusvlei, Namibia

W.R. Branch